

Historic, Archive Document

Do not assume content reflects current scientific knowledge, policies, or practices.

60267

PLANTS, ROSES AND BULBS

FOR FALL AND WINTER BLOOMING

FALL, 1913

LIBRARY,
U.S. Department of Agriculture,
Washington, D. C.



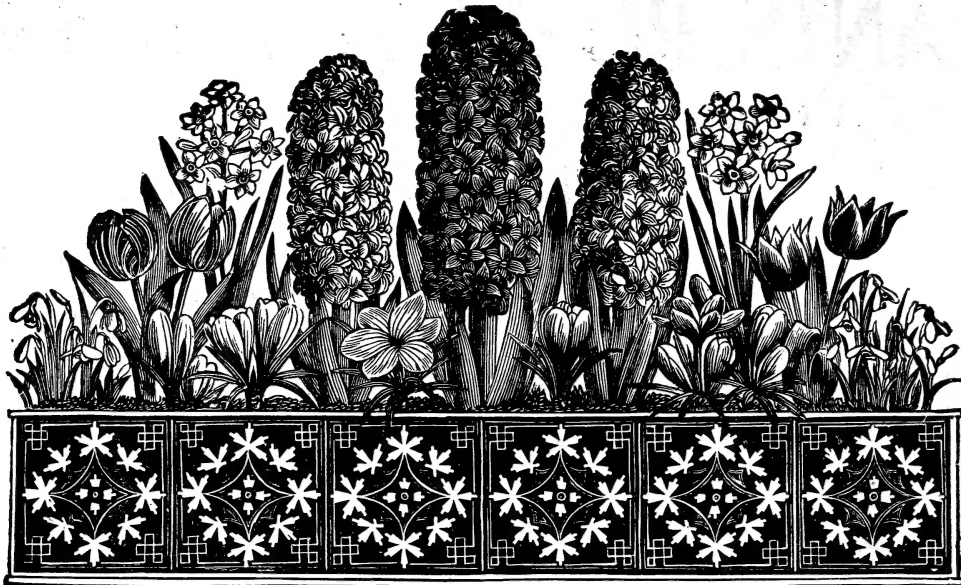
Japanese Iris—they should be planted in the fall. See page 17.

THE GOOD AND REESE CO.

THE LARGEST ROSE GROWERS IN THE WORLD

SPRINGFIELD, OHIO

SPRINGFIELD, OHIO
 THE
 FLORAL CENTER
 OF THE WORLD
 20 MILLION PLANTS SOLD
 EACH YEAR
 SEVEN MILLION
 OF WHICH ARE ROSES



Window Box of Dutch Bulbs Showing How They Bloom in the Winter Time.

HOW TO GET YOUR PLANTS FREE

Make up a Club Order among your friends and neighbors and thus get your own plants free. Everyone has an acquaintance who, if aware of the fact that you were sending for flowers, would join you for your trouble in sending their order. We give you the following liberal discounts. It will be well worth your while to interest your friends. Try it.

Schedule of Club Rates for Plant Orders

Get up Club Orders among your friends and secure your own plants **FREE**

CLUBBING RATES—Do not include Collections, Special Offers or Bulbs in making up your Discounts, as it only applies to Price per Single Plant or Packet. Individual orders allowed the same discount.

Any person sending us \$1.00 may select Plants and Seeds from catalogue to value of 10 cents extra.

Any person sending us \$2.00 may select Plants and Seeds from catalogue to value of 30 cents extra.

Any person sending us \$3.00 may select Plants and Seeds from catalogue to value of 50 cents extra.

Any person sending us \$4.00 may select Plants and Seeds from catalogue to value of 75 cents extra.

Any person sending us \$5.00 may select Plants and Seeds from catalogue to value of \$1.00 extra.

And for every dollar sent above \$5.00, select 25 cents extra.

ELEGANT LIST OF CHEAP SETS

Set.	Price.
A—10 Ever-blooming Roses, ten colors.....	50c
B—10 Prize-winning Chrysanthemums, different.....	50c
C—8 Lovely Fuchsias, all different.....	50c
D—6 Elegant Double Geraniums.....	50c
E—6 Elegant Single Geraniums.....	50c
F—6 Assorted Geraniums, double and single, scented....	50c
G—8 Choicest Double Hyacinths, different colors.....	50c
H—8 Assorted Hyacinths, double and single, Roman....	50c
K—8 Lovely Begonias, choicest kinds.....	50c
L—12 Choicest kinds of Narcissus.....	50c
M—25 Lilies of the Valley, exquisite.....	50c
N—12 Magnificent Coleus, bright colors.....	50c
O—4 Chinese Sacred Lilies, or Joss Flowers.....	50c
P—40 Crocus, eight different colors.....	50c
Q—20 Parrot Tulips, all kinds.....	50c
R—20 Double Tulips, all kinds.....	50c
S—20 Single Tulips, all kinds.....	50c
T—12 Vines and plants for vases and baskets.....	50c
W—4 Fragrant Carnation Pinks, ready to bloom.....	50c

No two alike in these sets. Any three sets for \$1.25. Any five sets for \$2.00. By mail, postpaid, safe arrival and satisfaction guaranteed. Order by the letters.

"HALF PRICE" COLLECTION

Of SEVENTY-SIX CHOICE WINTER-BLOOMING BULBS for only **\$1.00**

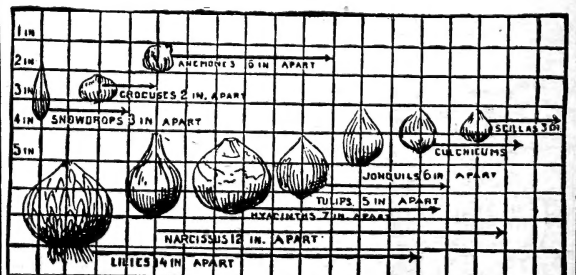
SUITABLE FOR EITHER OUTDOOR OR HOUSE CULTURE

- | | |
|--------------------------------|--------------------------|
| 5 Iris. | 4 Anemones, four kinds. |
| 6 Hyacinths, different colors. | 5 Glory of the Snow. |
| 10 Tulips, six kinds. | 3 Oxalis. |
| 20 Crocus, all colors. | 3 Allium. |
| 5 Snowdrops. | 4 Tritelia and |
| 6 Freesias. | 1 Beautiful Easter Lily. |
| 4 Narcissus, assorted. | |

All the Bulbs offered in this collection, if planted with ordinary care, will bloom beautifully, and furnish flowers from Christmas until Easter. Try them. It will repay you well. In ordering say "Half-Price" Collection.

SPECIAL OFFER—For \$1.60 two "Half-Price" Collections, or for \$2.00 three Collections. Get your neighbors to club with you.

Diagram Showing Depth and Distance Apart to Plant the Different Varieties of Bulbs.



SPECIAL 50-CENT BULB COLLECTIONS

THIS PRICE INCLUDES PAYMENT OF MAIL OR EXPRESS CHARGES BY US.

"STAR" HYACINTH COLLECTION FOR 50 CENTS

In making up this collection we use our best Bulbs, and of best varieties and colors. This is a fine offer, and all who take advantage of it will be more than repaid with magnificent bloom. We offer it to you as follows, for 50 cents postpaid.

- | | |
|--|-----------------------------------|
| 1 Gorgeous Single Pink Hyacinth. | 1 Double White Hyacinth. |
| 1 Large Single Red Hyacinth. | 1 Double Porcelain Blue Hyacinth. |
| 1 Splendid Single Pure White Hyacinth. | 1 Double Blush White Hyacinth. |
| 1 Lovely Single Blue Hyacinth. | 1 Double Pink Hyacinth. |
| 1 Double Dark Red Hyacinth. | |

"I-X-L" TULIP COLLECTION FOR 50 CENTS

Here we have a fine collection of the best of our Tulips, and offer them as a collection for 50 cents, postpaid. Nothing is surer to bloom nor make a more pleasing sight than a bed of Tulips, and in making up this collection we use our best named varieties, and the unnamed kinds are superfine, blooming evenly and perfectly. Following is the list:

- | | |
|--|---|
| 1 Double Tulip—"Rex Rubrorum." A brilliant scarlet; a splendid variety. | 1 Single Yellow Tulip—"Chrysolora." A fine yellow and a good bloomer. |
| 1 Double Yellow Tulip—"Count of Leicester." Orange and yellow feather. | 1 Gorgeous Flowered Tulip—"Peacock." Combining different colors that produce a dazzling effect. |
| 1 Double White Tulip—"La Candeur." A beautiful variety of snowy whiteness. | 1 "Parrot" Tulip. The best of fancy Tulips; a grand bloom. Our bulbs are sure to bloom. |
| 1 Double Red Tulip—"Duke of York." A charming shade of red, rich and a full flower. Edged white. | 1 "Gesnerian" or Giant Tulip. Flowering freely and on long shoots; glossy coral-red flowers, larger than teacups. |
| 1 Single White Tulip—"La Reine." A fine, showy white flower, rosy-shaded. A fine bloomer. | 1 Special "Golden Crown" Tulip. A splendid variety of a deep golden-yellow, red border. One of the finest of fancy kinds. Late bloomer. |
| 1 Single Pink Tulip—"Cottage Maid." A beautiful shade of pink. A fine bloomer. | 8 Superfine Single and Double Tulips. Unnamed, but splendid colors and kinds, and will make a fine show. |
| 1 Single Scarlet Tulip—"Artus." A rich, dazzling color. A good flower. | |

"ROYAL" NARCISSUS COLLECTION FOR 50 CENTS

There is no class of Bulbs which is really more beautiful than the Narcissus, with its masses of white, orange and gold. The varieties we here offer are of the best, and the bulbs are large and fine. They are sure to flower, and many of them continue to do so year after year. This is a collection of great value for little money.

- | | |
|---|---|
| 1 "Paper White" Narcissus. The most beautiful of all pure white sorts, early and easy to bloom; fine for Christmas flowering. | 2 Double "Alba Pleno Odorata" Narcissus. The Jasmine-shaped, snow-white flowers of this sort are exquisitely scented. |
| 2 "Incomparable Alba Stella" Narcissus. A most striking variety, with an orange cup; a beautiful sort. | 2 "Incomparable," or "Butter and Eggs" Narcissus. A golden double flower, much desired as a fine forcing kind. |
| 2 Narcissus "Poeticus." The true pure white and orange-cupped Poet's Narcissus; a splendid variety. | 1 Double "Von Sion" Narcissus. One of the finest of Narcissus, producing gorgeous flowers with deep yellow trumpet. |
| 2 "Trumpet Major" Narcissus. The deep golden single variety, much prized as an early forcer. | 2 Single Jonquils, fragrant and beautiful. |
| | 1 "Campernelle" Jonquil. Large, six-lobed, yellow flowers. |

"UNEEDA" COMBINATION COLLECTION FOR 50 CENTS

For those who want some of each of the three collections, "Star," "I-X-L" and "Royal," and who do not want all three, we have arranged this fine collection. This collection contains a fine assortment of Hyacinths, Tulips and Narcissus, and will make a fine show for a very small sum:

- | | |
|--|--|
| 1 Fine Double White Hyacinth. | 1 "Poet's Narcissus"—The pure white variety, with orange cup edged with crimson. |
| 1 Striking Single Red Hyacinth. | 1 Superb White Tulip—"La Candeur." |
| 1 Beautiful Double Porcelain Blue Hyacinth. | 1 Flashing Scarlet Tulip—"Bacchus." |
| 1 Orange-cupped Golden Narcissus—Incomparable—"Ajax Princeps." | 4 Superfine Mixed Tulips, which will make a gorgeous display. |
| 1 Snow-white, profuse-flowering Narcissus—"Paper White." | 1 "Giant Gesnerian" Tulip, the tallest of Tulips; a striking variety. |
| 1 Double Golden "Von Sion" Narcissus; a charming sort. | 1 "Parrot Tulip." This flower produces a very pleasing combination of colors. |
| 1 Orange-striped Double Tulip—"Count of Leicester." | |

"GRAND" ASSORTED COLLECTION FOR 50 CENTS

In this collection we furnish for a small sum a very complete lot of bulbs, both large and small, and producing all sorts and colors of flowers. Description may be found for all of them in the catalogue, and the prices when taken as a collection are very low. Abundance of beautiful, showy flowers will reward the purchaser. The collection contains the following:

- | | | |
|---|--|------------------------|
| 3 Fine Hyacinths—pink, white and blue. | 1 Ranunculus. | 2 Tritelleia Uniflora. |
| 5 Superfine Tulips, assorted colors, single and double. | 2 Snowdrops. | 2 Scillas. |
| 2 Allium Neapolitanum. | 1 Narcissus Incomparable, "Ajax Princeps." | 5 Crocus. |
| 1 Anemone. | 3 Feather Hyacinths. | 3 Oxalis. |
| 1 Jonquil, single. | 2 Grape Hyacinths. | 1 Freesia. |

"MAGNIFICENT" BORDER COLLECTION FOR 50 CENTS

This magnificent assortment of low-growing but profuse-flowering bulbs contains more flowers for the amount expended than one could well imagine. Some of the most strikingly beautiful bulbous flowers to be found among Dutch bulbs are contained in this collection. It will make a fine show as a border collection, surrounding other large bulbs, or if planted by themselves produce a fine appearance. The collection contains the following:

- | | | | |
|------------------------|------------------------|--------------------------|--------------------|
| 12 Assorted Crocus. | 5 Allium Neapolitanum. | 5 Chionodoxa Luciliae. | 3 Single Anemones. |
| 12 Snowdrops, single. | 3 Snowdrops Elwesii. | 3 Blue Grape Hyacinths. | 5 Sparaxis. |
| 5 Tritelleia Uniflora. | 5 Feather Hyacinths. | 3 White Grape Hyacinths. | 5 Scillas. |

ALL BULBS ARE WRAPPED AND LABELED.

GEM COLLECTION OF NAMED DOUBLE HYACINTHS

FOR BEDDING OR POT CULTURE

Price, 10 cents each; the set of Nineteen for \$1.50.
Any Six for 50 cents.

In presenting this beautiful collection of Hyacinths, we do so with the assurance that all who order them will be amply repaid with fine bulbs, and the flowers during the winter months will cheer the home by their presence and perfume. We have spared no pains or expense to procure, in these sets, the very best varieties that are produced in Holland. Try a set. None to equal them. In ordering, say "Gem" collection.

BLOKSBERG—Lovely shade of light blue or porcelain.

BOUQUET ROYAL—One of the finest pinks. Extra large spike.

CHESTNUT BLOOM, "Kastanzenbloom"—Extra large truss; color bright rose. A fine variety.

DELICATA—Another variety producing that rare delicate porcelain-blue color.

FLEVO—A beautiful snow-white variety.

GENERAL ANTINCK—Clear deep blue; extra fine.

GRAND MONARQUE DE FRANCE, "White Bouquet Royal"—Beautiful cream-white, a new shade in Hyacinths.

GOETHE—Pure yellow; excellent.

GARRICK—The finest of all double light blue Hyacinths.

GROOTVORSTIN—Blush-pink, large spike.

ISABELLA—Extra large truss of delicate blush-white.

LA VIRGINITE—Large spike of purest white.

NOBLE PAR MERITE—A glorious red; extra early.

PRINCE OF WATERLOO—A beautiful paper white Hyacinth.

PRINCE OF ORANGE—A beautiful bright red color. Extra.

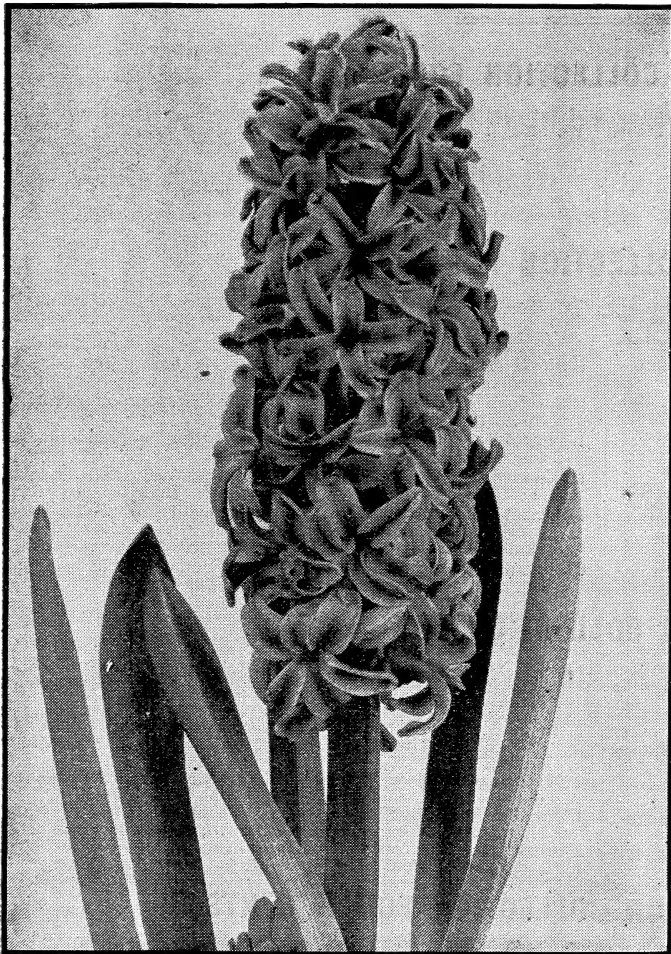
PRESIDENT ROOSEVELT—A new variety having gorgeous flowers of a bright rose color.

SNOWBALL, "Double La Grandesse"—As pure white as the driven snow. Extra.

SOVEREIGN—A bright clear yellow.

SUNFLOWER—Pure yellow, shade of sunflower.

Remember The above collection of "Gem" Hyacinths embraces the very best varieties that money will buy of Double Hyacinths. There are none better.



GENERAL COLLECTION OF HYACINTHS

Price, 10 cents each; any six for 50 cents; any thirteen for \$1.00. The entire set of twenty-nine for \$2.00.

Our patrons can rely on the Hyacinths in this list as being the very best of their colors. We have tested varieties from year to year and can guarantee satisfaction in any of the following kinds. You cannot possibly go amiss in your selection of any of them. These varieties are equally good for planting outdoors, or for forcing in the house in the winter.

AVALANCHE, "White Baron Von Thuy"—Pure white.

ANGENIS CHRISTINA—Immaculate white. Extra fine.

BLANCHARD—Lovely pure white; forces very easily.

BLANCHEUR A MERVEILLE—Another grand white variety; pure.

BARON VON THUYL—A grand shade of deep blue.

ETNA—Brilliant pink; superb.

GRAND VAINQUEUR—Very bright rich ruby-red.

GENERAL VETTER—Blush-white, pyramidal shape.

GRAND BLANCHE—A beautiful delicate blush.

HERMAN—Orange-yellow color, tinted with crimson.

HEROINE—Pure golden-yellow; large truss.

JACQUES—New, beautiful silvery-rose with satin sheen.

LE FRANCHISE—A blush-white flower of the largest size.

LE PEYROUSE—Light blue; fine for beds and forcing, a very large compact spike of large bells; a grand variety.

L'INTERESSANTE—Deep yellow; one of the best yellows.

MACMAHON—Pure yellow, large broad spike.

MENELIK—Dark blue, almost black.

ORNAMENT—You will buy this again after once seeing it. Silvery-rose.

PAIX DE LA EUROPE, "Peace of Europe"—Very fine snowy-white; large spikes and large bells. A grand variety for pots and glasses.

PIENEMAN—A grand light blue or porcelain color; very delicate and beautiful.

POTGIETER—Azure-blue; an entrancing color.

ROSALIE, "Rose Baron Von Thuy"—A standard variety, bearing large trusses of deep rose colored flowers.

ROSE AMARANTH—Can't be beaten for a bright rose Hyacinth.

ROSEA MAXIMA—A grand large truss of deep rose; some would call it a red.

ROBERT STEIGER, "Marie Catherine"—Extra light red; fine large spike and bells.

REGULUS—Light blue with deep dark blue stripes. Trusses very large.

SCHOTEL—A very popular Hyacinth. Everybody wants it. Light blue; immense.

WILLIAM I—A beautiful dark blue; a grand variety.

WILLIAM III—Orange-yellow, pink center.

CHOICE COLLECTION OF "FANCY" HYACINTHS

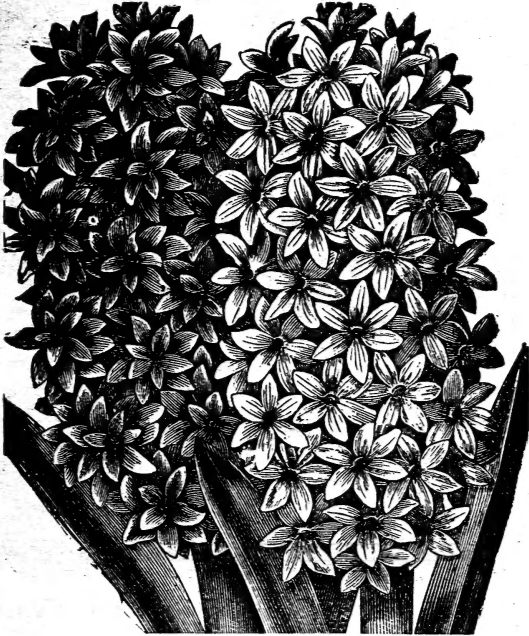
In this collection we place all the high-priced varieties. There is such a demand for them in Europe, where they are well acquainted with the good sorts, that the demand exceeds the supply, and they are always scarce and hard to get. When you have the following twelve Hyacinths in your possession, you have the very best that money can buy. They are every one gems of the first water.

PRICE, 20 CENTS EACH, OR THE SET OF TWELVE FOR \$1.50. ANY SIX FOR 85 CENTS.

In ordering, say "Fancy" Collection of Hyacinths. They are the largest, the most delicate colored and the most fragrant of all Hyacinths.

BIRD OF PARADISE—The spike is the largest of all yellow Hyacinths. The color is a rich deep golden-yellow. Very pure. No other yellow Hyacinth approaches it in either color or size.

CZAR PETER—This is, without question, the finest of all light blue Hyacinths. The truss is very large and solid. The



Fancy Hyacinths.

color is a delicate sky-blue. This Hyacinth is admired more than any other variety of any color in Holland. Simply grand.

ENCHANTRESS—Do not forget that the porcelain-blue color in Hyacinths is the most admired and in greatest demand. This is a delicate porcelain-blue color. Extra fine.

GRAND MAITRE, "Grand Master"—Deep porcelain-blue; one of the grandest of all blue Hyacinths. Much prized in Holland.

KING OF THE BELGIANS, "Roi des Belges"—So many persons complain that they never get a bright red Hyacinth. The color of this grand variety is a rich, glossy ruby-red of the brightest hue. Certainly a gem.

KING OF THE BLUES—This is the richest and most elegant of the dark blue Hyacinths; it is so dark that the texture of the flower seems covered with a rich sheen of velvet almost black. Exquisite.

LA GRANDESSE—This variety deserves the name of Grandness. Splendid, immense spikes of large pure ivory bells, waxy in appearance, vying with the snow in purity, while its fragrance is delicious, yet penetrating. Simply exquisite. The best of all whites. Extra fine. Immaculate in color.

LA VICTOIRE—This is a bright red Hyacinth of the greatest merit. The color is a rich even shade of bright red. Superb.

LADY DERBY—This is said by all who have seen it to be the best dark rose colored Hyacinth yet offered. The florets are extra large. Spike solid and compact and of immense size, and the fragrance is delicious. The color is a rich deep rose, very bright and distinct. Elegant.

MINNIE, "Mimi"—A lovely shade of blush-white. This is one of the new varieties and takes rank in Holland among the ten best varieties. It sometimes comes with a very delicate tracing of pink that sets off its charms to great advantage. Hard to beat.

QUEEN OF THE BLUES—In Holland the delicate blue Hyacinths take precedence over all other colors, and the blue varieties in this collection cost much more than any other color. With Czar Peter this variety is a sure enough rival. It does not conflict with any of the other blues in this collection, being entirely distinct, a delicate porcelain-blue, a color that is extremely rare in flowers of any kind. Extra fine.

SIR WILLIAM MANSFIELD—This is the rare color in Hyacinths, being a most beautiful shade of lilac or violet. When you see this in flower you will always remember it.

REMEMBER that the foregoing Twelve Hyacinths are the very best in cultivation. Get them, and you have the best.

FIVE BEAUTIFUL ROMAN HYACINTHS

We wish to call special attention to these beautiful Roman Hyacinths, which are so valuable for early winter blooming. They are among the few flowers which can be had as early as Christmas and New Years. Each bulb throws up several spikes of flowers, which are very beautiful and fragrant, and when kept in a cool room will keep perfectly for weeks. Three can be planted in a four or five-inch pot, and will soon be in flower. In the garden they are the first of all Hyacinths to bloom. We offer extra large bulbs. The new double ones are exceedingly fine. Do not fail to plant a good lot of them for winter.

CANARY YELLOW—Few novelties have come out recently which will in importance surpass this new yellow Roman Hyacinth. There is nothing to be said of it except it is like the common Roman white, except in color, which is a lovely shade of light yellow. 5 cents each; six for 25 cents; thirteen for 50 cents.

PINK—A grand new sort, with enormous bright deep bells in large spikes. 5 cents each; six for 25 cents; thirteen for 50 cents.

RED—A beautiful shade of deep red, very bright and penetrating. 5 cents each; six for 25 cents; thirteen for 50 cents.

BLUE—Lovely light blue, a fine contrast to the white variety. 5 cents each; six for 25 cents; thirteen for 50 cents.

WHITE—Has elegant waxy-white bells of great beauty and fragrance. Large bulbs, 5 cents each; six for 25 cents; thirteen for 50 cents.



Roman Hyacinths for forcing in pots. If planted early and kept warm can be had in bloom for Christmas.

SPECIAL OFFER For only 20 cents we will send one Bulb of each of these five fine Roman Hyacinths; three of each for 50 cents.

OUR "GRAND" COLLECTION OF SINGLE HYACINTHS

We advise all our friends to plant Single Hyacinths, as the spikes are very much larger, and the individual florets much larger and more compact, while the fragrance is much sweeter than in double varieties. In a word, they are much showier and grander in every respect. Price, 10 cents each; the set of twelve for \$1.00. Two sets for \$1.75. Any six for 50 cents. A fine collection of Hyacinths at moderate cost. In ordering, say "Grand" Collection of Hyacinths.

CARDINAL WISEMAN—If there is one Hyacinth that will instantly attract attention it is this one. A beautiful silvery-rose color.

GRAND LILAS—Immense spikes and mammoth florets. Probably the largest of all Hyacinths, and is another of those delicate blues, the color that fairly entrances you. A variety that is deservedly popular everywhere. Superb.

GARABALDI—So many people are looking for a red Hyacinth. Garibaldi is a rich dark ruby-red. Very showy and attractive.

GENERAL DE WET—This is known in Holland as the "Pink Grand Master." It certainly is a most wondrous beautiful bright shade of silvery-pink.

INNOCENCE—A lovely shade of creamy-white. This is one of the new varieties, and takes rank in Holland among the ten best varieties. It sometimes comes with very delicate tracings of pink that set off its charms to great advantage. Superb.

KOH-I-NOOR—This charming variety is so brilliant as to be named for the great diamond of that name. A very showy red Hyacinth.

LORD BALFOUR—A grand large spike bearing immense bells of a deep violet color.

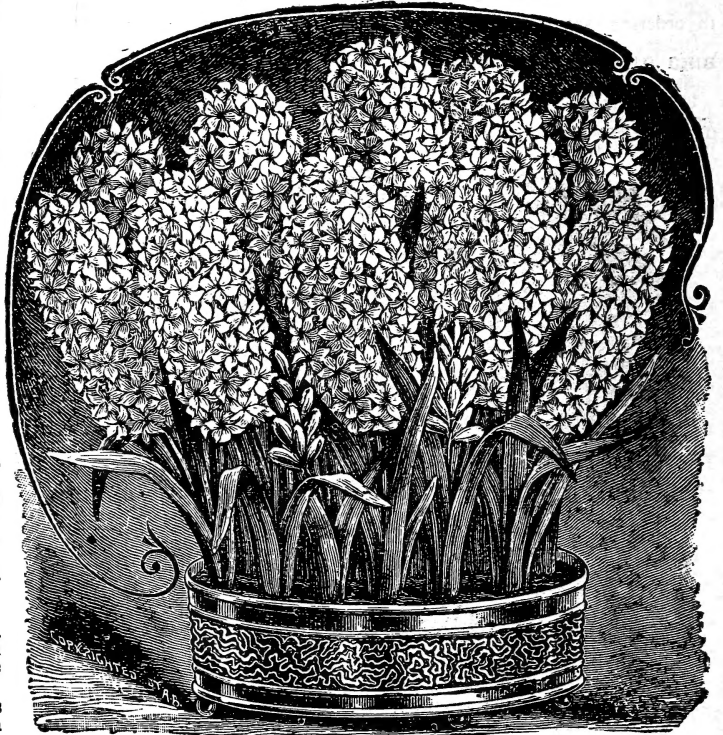
MORENO—This is said by all who have seen it to be the very best rich crimson Hyacinth yet offered. The florets are extra large, spike solid and compact and of immense size and the fragrance is delicious. The color is a dazzling, sparkling red, very bright and distinct; elegant.

MR. PLIMSALL—This is a very attractive Hyacinth bearing immense spikes of pure white with a delicate blush overcast.

PINK BEAUTY, Charles Dickens—Large, tall spike, very shapely bells of the largest size. This well deserves the name of Pink Beauty, as it is the finest of all pink Hyacinths. Extra.

PERLE BRILLIANT—Another of those marvelous colors in Hyacinths, in fact the one rare color in all flowers, a light porcelain-blue. Extra fine.

YELLOW HAMMER—Deep golden-yellow. A very refined and chaste color.



Pan of "Grand" Single Hyacinths, showing how they may be flowered in the house.

"POPULAR" COLLECTION OF HYACINTHS

Price, 10 cents each; the twelve for 90 cents; any six for 50 cents.

ALBERTINA "Augusta"—Pure white, extra fine.

CHARLES DICKENS—A grand shade of bright blue.

GIGANTEA—Immense truss of bright rose colored flowers.

GERTRUDE—This is the freest flowering of all the Hyacinths; often has two to four spikes of bloom, a lovely deep pink color.

GENERAL PELLISSIER—Deep scarlet, early, good forcer. The richest red of all the Hyacinths.

GENERAL GORDON—A grand deep golden-yellow Hyacinth.

GRANDEUR A MERVEILLE—Has many admirers; of a delicate blush-white. Superb.

JOHAN—Large truss of delicate porcelain-blue.

KING OF THE YELLOWS—A very pure color of bright yellow.

LORD MCCAULEY—Very rich red in color; has beautiful large, compact spike. A very handsome and showy variety.

MARY—Immense spikes of rich dark blue.

MADAME VAN DER HOOP—Pure white; immaculate in color.

THE GRAPE HYACINTH—Improved



Grape Hyacinths.

This charming little gem should be found in every garden in abundance. It has been termed the "Blue Lily of the Valley," and when planted in a mass with that sweet flower it does resemble it to some extent, and forms a most fascinating combination. It grows about the same height, and blooms about the same time each spring. It increases rapidly, and when once planted a mass of beautiful blossoms, which will increase each year, is insured for a lifetime. But for winter blooming in pots it is of the greatest value. Plant five or six bulbs in a five-inch pot, and you will have as lovely a pot of bloom as you can imagine. Words fail to do it justice. Flower stems grow a foot in height, bearing a dense spike of sky blue bells tipped with white, and oh! so lovely. Please remember that ours is an improved strain of Grape Hyacinths, much superior to the old foran.

IMPROVED BLUE—Three for 5 cents; twelve for 15 cents.
SNOW WHITE—New and scarce. 2c each; 6 for 10c; 12 for 18c.

THE FEATHERED HYACINTHS

A very pretty and curious species of Hyacinths, the flowers of which are a feathered plume, borne on the end of a large spike. It is perfectly hardy, and is particularly adapted for open ground planting and for indoor culture. Price, 3 cents each; ten for 25c.

MIXED HYACINTHS

FOR BEDDING OUT
IN THE FALL

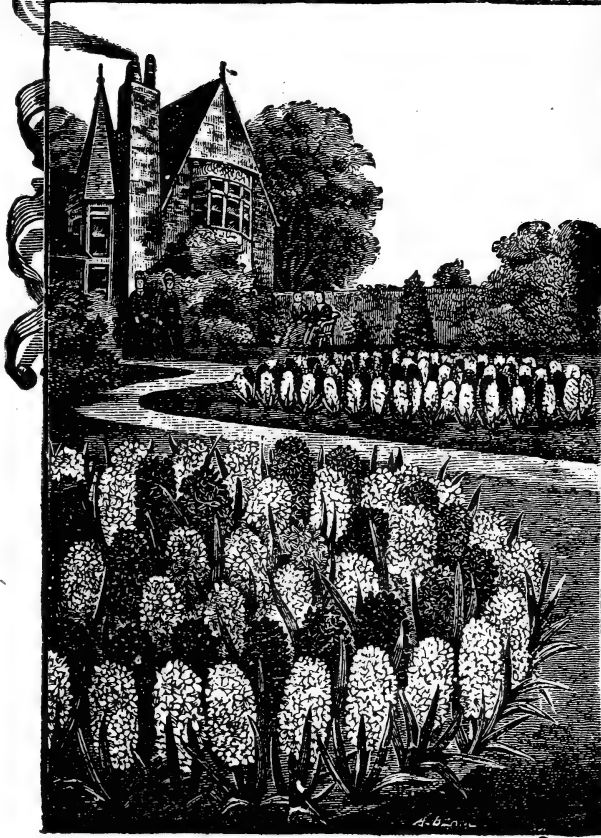
These mixed Hyacinths are used almost exclusively for bedding out in the fall on account of their cheapness. They are just as good colors and just as fragrant as the named varieties; the difference is in the cost of keeping the named sorts separate, both while planting and after they are dug. The exact shades cannot be given, but the general outline of colors are kept separate, so that in ordering you know what color you are buying.

7 cents each, or the entire sixteen choice varieties for \$1.00.

- Double Red,
- Double Rose,
- Double Pink,
- Double Pure White,
- Double Blush,
- Double Blue,
- Double Light Blue,
- or Porcelain,
- Double Red, Striped white.
- Single Red.
- Single Rose.
- Single Light Blue.
- Single Pure White.
- Single Pink.
- Single Blue, or Porcelain,
- Single Blush,
- Single Yellow.

Remember, the above choice collection of sixteen Hyacinths for only \$1.00. All different.

MIXED HYACINTHS IN BEDS



16
CHOICE
VARIETIES
FOR
\$1.00

Early Double Flowering Tulips

and in consequence when singles and doubles are planted in conjunction the "time of the Tulips" is greatly prolonged. Double Tulips are beautifully adapted for beds on the lawn, in the garden, and for mingling in clumps of half a dozen or more around the edge of shrubbery. They are robust growers and exceedingly effective. The early sorts do splendidly when grown in pots for winter blooming, but must be forced much slower than Single Early Tulips, by keeping them cooler. Price, 3 cents each, or the set of twenty-four distinct kinds of Double Early Tulips for 60 cents. Those preceded with a star are the best varieties for forcing indoors.

- ALBA MAXIMA—Creamy-white; very desirable.
- COCHENELLE—A beautiful carmine color.
- COUNT OF LEICESTER—Yellow, flamed with red. Fine bedder. Flowers at the same time as La Candeur and Rex Rubrorum.
- DUKE OF YORK—Rich, clear, bright red, with white edge.

Have massive flowers of brilliant and varied colors, shades and markings, and being double, the flowers last much longer in bloom than single varieties.

- DUKE OF BORDEAUX—Beautiful variegated orange-yellow.
- GLORIA SOLUS—Brownish-red, bordered with pure gold.
- JOSEPH ISRAELS—A grand red bedding Tulip.
- LORD BEAGONSFIELD—Extra deep carmine rose or lilac; extra large.
- LA CANDEUR—Pure white. Fine bedder. This variety is beautiful when planted among Rex Rubrorum to form designs, etc., planted four inches apart. We sell an immense quantity of them, being very cheap.
- *LA MATADOR—Clear scarlet, very desirable.
- MA COUSINE—Beautiful, rich violet, white edged. This variety blooms at the same time as Rex Rubrorum and La Candeur, and makes an elegant border for these varieties.
- PURPLE CROWN—The only real dark red double Tulip. Very rich and effective.
- QUEEN VICTORIA—Rich wine color. Very distinct.
- ROSE BLANCHE—Pure white. Splendid bedder.
- *ROSINE—A beautiful, rich clear pink. Fine forcer.
- REX RUBRORUM—Richest scarlet. Beautiful when planted among La Candeur to form designs of any description, as they grow of equal height and bloom at the same time. A rich effect is produced by planting Rex Rubrorum in center of bed, then surround this with La Candeur, and border with Count of Leicester. They all bloom at one time.
- *RUBRA MAXIMA—Dark velvety-scarlet, immense large flowers.
- *ROSE LA MONTAGUE—(Rose of the Mountain.) Beautiful light pink, good flower, tall grower.
- TEA ROSE—Salmon-yellow; color of Marechal Niel Rose.
- TITIAN—Brown, splashed with golden-yellow.
- *TOURNESOLL—Elegantly variegated red and yellow.
- *TOURNESOLL, Yellow—A deep, bright golden-yellow. Extra.
- VELVET GEM—A rich velvety-crimson. Fine.
- VUURBAK, "Light House"—Dazzling vermilion.



Early Double Tulips.

The Six "Greatest of All" Early Flowering Single Tulips

These six are the grandest of all Tulips. Order a set and see what beautiful colors there are in Tulips. 5c each, the 6 for 25c.

LADY BOREEL—(New.) Pure immaculate white. Very large.

PINK BEAUTY—(New.) Extra fine large flower of the brightest pink.

PRESIDENT LINCOLN, "Queen of Violets"—(New.) Clear magenta. Extra.

REMBRANT—(New.) Immense size. Very early; bright scarlet.

VANDER NEER—(New.) This is the famous blue Tulip. Bright blue color.

Extra large.
WOUWERMAN—Dark royal purple; a grand Tulip.

EARLY FLOWERING SINGLE TULIPS

NAMED VARIETIES. Those marked with a Star are the best for forcing in the house.

TULIPS are such universal favorites that it is scarcely necessary to expatiate upon their merits here. Their ease of culture, combined with beauty of form and gorgeous coloring, render them the most popular bulbs grown for spring bedding, and for winter flowering in the greenhouse and window garden they are incomparable. The Tulip is extremely hardy and of easy culture, flowering as freely in the shade as in the sunshine, and producing as fine flowers in a confined town garden as in a more favored place. Double and Single Tulips, when associated together and planted in front of shrubs, maintain a longer display than if either are separately planted. In gardens where the flower beds must be kept gay from the earliest day of spring, plant between the lines of Tulips, Scilla Sibirica, Chionodoxa Luciliae, Snowdrops or Crocus, and as these flower first they can be removed or cut down when the Tulip is coming into bloom. The Single Tulip has a greater variety of rich, delicate and attractive colors than any other selection of spring flowering bulbs. The Single Tulip is extensively grown for indoor decoration, three or five bulbs in a pot.

Price, 4 cents each, any fifteen for 50 cents; the set of forty-three distinct varieties of Early Single Tulips for \$1.25.

ADMIRAL REINIER—Rosy-red, white striped; a grand Tulip.

ARMS OF LEIDEN, "Wapen Van Leiden"—White, striped with violet and red; very beautiful.

ARTUS—Bright scarlet, splendid border; flowers with La Reine and Gold-Eagle.

***BELLE ALLIANCE**—(Waterloo.) A clear scarlet; flowers at same time of L'Immaculee and Chrysalora.

CHRYSALORA—Golden-yellow; extra fine. It is the best single yellow Tulip for outdoors.

COTTAGE MAID—(La Precieuse.) Snow-white, bordered with pink; very pretty.

***COLEUR DE CARDINAL**—Brightest red, outside of petals shaded bronze.

CRIMSON KING—(Roi Cramoisi.) A good crimson bedder.

COLEUR PONCEAU—Wine color, center of petals flamed white.

***CRAMOISI BRILLIANT**—Clear brilliant scarlet; tall grower.

DUCHESS DE PARMA—Orange-yellow tinted brown; large.

ELEONORA—Richest royal violet; extra fine.

HERMAN SCHLEGEL—Primrose-yellow, pink edge.

***JOOST VAN VONDEL**—Giant flower; brilliant red, reverse of petals bronze color.

***KAISERSKROON**—Red, with broad yellow edge; fine for pots; the largest of all Tulips.

***KING OF THE YELLOWS**—Deep golden-yellow; perfect shaped flower; keeps a long time.

LAC VAN RHIJN—Violet color, broad white edge.

***LA REINE**—(The Queen.) White delicately shaded pink.

LEONARD DE VINCI—Orange; very attractive color.

L'IMMACULEE—(Snowball.) Snow-white; extra large flower, good bedder.

***MON. TRESOR**—Best yellow, extra large, fine for forcing; blooms by Christmas.

MR. STANLEY—Rosy-purple; very attractive.

OPHIR d'OR—Deep golden-yellow.

***PRINCESS MARIANNE**—White, slightly shaded pink; very fine.

PRINCESS WILHELMINA—Deep pink; very attractive.

***PRINCE OF AUSTRIA**—Orange, shaded scarlet; very large and fine.

***PROSPERINE**—Violet-rose, very large, forces by Christmas.

***POTTEBAKKER YELLOW**—(Ophir d'Or.) Large, deep golden-yellow flowers of immense size; none better.

***POTTEBAKKER WHITE**—Pure white; in large demand for forcing.

***POTTEBAKKER SCARLET**—(Verboom.) Deep, rich scarlet; very large flowers; tall grower.

***ROSE QUEEN**—White, with deep pink border; very large and attractive.

***ROSE HAWK**—A grand flower of delicate soft pink.

RACHEL RUISCH—White, with pink edges.

ROSAMUNDI HUIKMAN—Rich, brilliant rose color; very fine.

***ROSE GRIS DE LIN**—Very fine, bright pink; elegant variety.

***ROSE LUISANTE**—The best deep pink for forcing; extra.

STANDARD ROYAL—(Silver.) Base of flower white, elegantly veined scarlet; beautiful variegation; extra fine.

THOMAS MOORE—Buff-orange; very showy.

***VERMILION BRILLIANT**—The best scarlet forcer; large flower.

***WHITE HAWK**—Pure snow-white; splendid forcer; large flower.

***WHITE SWAN**—Pure white; excellent for forcing.

***WASHINGTON**—Pure snow-white; as a bedder it has no equal.

***YELLOW PRINCE OF ORANGE**—A lovely bright yellow; forces easily; keeps well.

BOTANICAL TULIPS

(LATE, OR MAY FLOWERING)

Try a Set of these Botanical Tulips; the seven for 45 cents.

CORNUTA STENOPETALA—(The Horned Tulip.) This is a remarkable variety, each petal twisting into a horn. Color red and yellow blended. Price, 5c each, six for 25c.

GREIGII—Bright orange-scarlet, immense large flowers; yellow inside of petals, bronzy-yellow outside; foliage black spotted. This variety and the Darwin Tulip are the handsomest of all Tulips. Order a Greigii Tulip and see what a beautiful flower it is. They cost us three times what other Tulips cost. Price, 8 cents each, two for 15 cents.

LA TULIPE NOIRE—The true black Tulip. This is a most wonderful flower; large in size and jet black in color. The most marvelous flower we offer in this catalogue. Your neighbors never saw a black Tulip. Try it and be surprised. Price, 20 cents each.

OCULUS SOLIS—(Peacock Tulip, or Sun's Eye.) Bright scarlet, with black markings in yellow ground that resemble the peacock's feather; very beautiful. Price, 5 cents each, six for 25 cents, thirteen for 50 cents.

RETROFLEXA—Pure yellow, with top of petals reflexed or bending downward. Price, 5 cents each, four for 15 cents.

SYLVESTRIS—(Florentina Odorata.) Yellow flowers, with delicious fragrance. This variety is the only Tulip that has fragrance. Price, 4 cents each, 35 cents per dozen.

VIRIDIFLORA—This is a great curiosity, as the flower is a deep, pure bright green, no other color mixed with it. Price, 5 cents each, six for 25 cents.

COTTAGE TULIPS

(LATE FLOWERING SINGLE)

These late Tulips flower long after the other varieties of Tulips are gone. They have beautiful flowers and are valuable for a succession. They are among the most beautiful Tulips and must be seen to be appreciated.

Price, 3 cents each; the set of twelve for 30 cents.

BOUTON D'OR—"Golden Beauty." Pure yellow, with black anthers, the deepest yellow Tulip in existence.

CALEDONIA—Extra large; brilliant orange-scarlet; dwarf variety.

DIDIERI ALBA—Pure snow-white; extra.

GOLDEN CROWN—Yellow, bordered with bright scarlet.

GESNERIANA SPATHULATA—Dazzling scarlet, with blue center; very large flower; tall grower.

GESNERIANA ALBA MARGINATA, or "Sweet Nancy"—White, delicately edged pink.

GESNERIANA MACROSPILA—Scarlet, with black center; fragrant.

ISABELLA, "Shandon Bells" or "Blushing Bride"—Opens cream; changes to light pink and changes again to light wine color. Extra.

LA NIGRETTE—A dark brown color in Tulips. Extra.

LA MERVILLE—Scarlet, suffused with orange; very graceful.

PICOTEE—(Maiden's Blush.) Opens cream. Edges of the flower turn deep pink, while the center of the flower is flamed delicate light pink. Very beautiful.

SULPHUR CROWN—White with pink border; beautiful

BEAUTY COLLECTION OF DOUBLE TULIPS

Order the "Beauty" Set of Tulips and get the grandest collection of gay flowers you ever beheld.

In this set of Tulips we embrace the gems of this lovely family of bulbs. They are the cream of all the Double Tulips. Some of them cost us over 10 cents, and when you see their exceeding great beauty you will not wonder that Holland at one time in her history went wild over this beautiful flower.

Price, 6 cents each, or the set of twelve for 60 cents.

(In ordering, say "Beauty" collection of Tulips.)

- BEAUTY**—(Blanc Borde Pourpre.) Rich royal purple, bordered white.
- *COURONNE D'OR**—(Crown of Gold.) The best deep golden-yellow. No flower has a richer color. The very best of all yellow Tulips. Superb.
- COURONNE DES ROSES**—(Crown of Roses.) This beautiful variety is the most lovely rose color of very delicate hue. In shape it resembles a Rose. Grand.
- BLANCHE HATIVE**—Early white. This is a beautiful and valuable Tulip, by many considered the best.
- *IMPERATOR RUBRORUM**—A very fine, bright, dazzling scarlet, the finest of its color; very rich.
- LADY PALMERSTON**—Large beautiful flowers of dark pink. The finest Tulip of its color.
- *MURILLO**—White, delicate flushed and penciled with pink. The most delicate colored of all the Tulips.
- PRINCE OF WALES**—Extra fine rich scarlet. One of the showiest varieties.
- RAPHAEL**—A beautiful rose colored Tulip; distinct.
- ROSE d'AMOUR**—(Rose of Love.) Delicate rose. Daintiest of all Tulips.
- *SALVATOR ROSE**—Deep dark pink. Excellent.
- WILLIAM III**—Bright scarlet, very rich and very bright.

SINGLE LATE TULIPS

(Called Byblooms.) White grounds, variegated with various colors. Fifty finest sorts, mixed. Price, 3 cents each; twelve for 25 cents.

SINGLE LATE TULIPS

(Called Bizarres.) Yellow grounds, variegated with various colors. Fifty finest sorts, mixed. Price, 3 cents each; twelve for 25 cents.

SPECIAL OFFER—For only 40 cents we will send twelve bulbs each of Byblooms and Bizarres.

Parrot or Dragon Tulips

The most beautiful and interesting class of Tulips which should be in every garden. The flowers are very large and perfect in shape, the petals are corrugated and toothed, while the color is the most striking combination of crimson and golden-yellow, streaked and edged with green, resembling the plumage of a parrot, whence these Tulips derive their name. A bed of these makes a gorgeous display, paying a hundred fold for any trouble that may be bestowed upon them. Only the largest size bulbs of Parrot Tulips bloom. We buy the largest size grown. Price, 3 cents each; 30 cents per dozen. The set of seven for 20 cents.

- ADMIRAL OF CONSTANTINOPLE**—Red, streaked with orange.
- COLEUR DE CAFE**—A dark brown color, very desirable.
- CRAMOISI BRILLIANT**—Beautiful carmine-red, large flowers. The most free blooming Parrot Tulip.
- GLORIOSA**—Yellow, striped with red.
- LUTEA MAJOR**—Golden-yellow, extra large flower.
- MARKGRAAF VAN BADEN**—Inside orange, outside scarlet and yellow feathered.
- PERFECTA**—Yellow, scarlet feathered, large flower.

FINE MIXED PARROTS—All colors. Price, 3 cents each; 30 cents per dozen.

DARWIN TULIPS LATE FLOWERING

A new family of Tulips. Grows three feet high, bearing immense large flowers, three to four inches in diameter. The most unique and richest colored of all the Tulip family. Their colorings vary from the light tints of white, lilac, rose and brown, to deep violet, brilliant red, dark brown and black. Very late flowering.

Price, 4 cents each; the set of thirteen for 40 cents.

- ASA GRAY**—Deep rose. Extra fine.
- CLARA BUTT**—Soft delicate rose. Extra fine.
- CIRCE**—Light porcelain-lilac.
- CALLIOPE**—Bright rose, a charming flower.
- GRETCHEN**—Soft salmon-rose. A beauty.
- GLORY**—Bright scarlet; blue center.
- MADAME KRELAGE**—Soft lilac rose, outside deep rose, white center. Large flower. Extra.
- NAUTICUS**—Purplish-rose; very large flower. Fine.
- NEGRO**—Crimson-maroon, dark center.
- PRIDE OF HAARLEM**—Tremendous flower of a soft violet-rose. Extra.
- PAINTED LADY**—Creamy-white, shaded delicate lilac; a beauty.
- WEDDING VEIL**—Soft lilac, pale outside with white center.
- WHITE WINGS**—(La Candeur.) Pure snow-white. Grand.

MIXED TULIPS

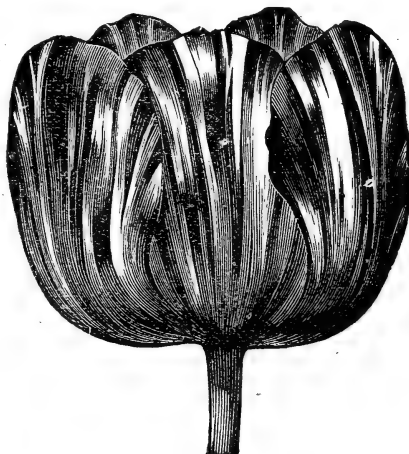
We have a large stock of unnamed Tulips for bedding, which we price so low as to make a large mass of these showy flowers a matter of a trifling expense. They are excellent bulbs, and will bear handsome blooms. Double and single collections are kept separate. Several hundred bulbs at the quotations below involve less expense than is required to secure a few summer bedding plants, and in the matter of display they are fully as valuable during their season as an equal number of ordinary blooming plants.

Superfine Mixture, Single Tulips—In fifty choicest kinds. Splendid flowers. Price, 25 cents per dozen; \$1.75 per hundred.

Superfine Mixture, Double Tulips—In fifty choicest kinds. Splendid flowers. Price, 30 cents per dozen; \$2.00 per hundred.

Superfine Mixture of Parrot Tulips—35 cents per dozen; \$2.50 per hundred.

Superfine Mixture of Darwin Tulips—Price, 35 cents per dozen; \$2.50 per hundred.



Bloom Tulip.

DUC VAN THOL TULIPS

They are the earliest to bloom of all the Tulips, and are greatly prized for pot culture during winter. In the garden they bloom with the Crocus and are welcome heralders of spring. Do not omit this charming class.

- WHITE**—Very fine.
- CRIMSON**—Beautiful crimson.
- VIOLET**—The earliest of all.
- RED AND YELLOW**—The earliest of all double bulbs to flower. Long before Crocus.
- YELLOW**—Clear and brilliant.
- ROSE**—Beautiful delicate pink.
- SCARLET**—Dazzling scarlet.
- GOLD STRIPED**—Scarlet, striped gold.

Price, 3 cents each; the set of eight for 20 cents.

LATE FLOWERING DOUBLE TULIPS

Price, 3 cents each, or the set of five for 12 cents.

- PAEONYGOLD**—A rich scarlet, feathered yellow.
- YELLOW ROSE**—Splendid golden-yellow, very large flower. The best of yellow Tulips. Extra fine.
- OVERWINNAAR**—Blue and white feathered. Extra.
- MARRIAGE DE MA FILLE**—White with cherry-crimson, feathered. Extra fine.
- BLUE FLAG**—Rich sky blue—the only Tulip of this color.

DAFFODILS AND NARCISSUS

"Daffodils—That come before the swallows dare, and take the winds of March with beauty."—Shakespeare.

Fine both for the garden and those preceded by (*) for forcing indoors.

NOTE In describing Narcissus we have referred to the "perianth" and "trumpet;" the latter is the long center, funnel-like tube, and the "perianth" is the surrounding row of petals, or leaves.

LARGE TRUMPET NARCISSUS—ALL YELLOW

***ARD-RIGH, or IRISH KING**—(Trumpet Major.) Also known as Single Van Sion. Earliest and most vigorous "Giant Trumpet Daffodil" in cultivation. Fine bold flowers of immense size. Perianth and trumpet full rich yellow. Extra fine sort for pot culture and forcing. Price, 4 cents each; eight for 25 cents.

CYCLAMINEUS—This is the famous Cyclamen-flowered Narcissus. Golden-yellow with petals reflexed. Price, 6 cents each, 60 cents per dozen.

***EMPEROR**—The Giant Narcissus. Largest of all. Flowers of richest yellow, trumpet immense, petals of perianth so large they overlap. Price, 8 cents each; four for 25 cents.

GLORY OF LEIDEN—One of the largest and most perfect of the golden-yellow trumpets. Perianth soft yellow. A superior variety. Price, 5 cents each; six for 25 cents.

***GOLDEN SPUR**—Large, deep yellow trumpet with expanding brim and large, spreading, full, deep yellow petals, unsurpassed for garden or forcing indoors. Price, 6 cents each; five for 25 cents.

***HENRY IRVING**—Long beautifully frilled trumpet nearly two inches wide at the mouth. Of rich golden-yellow with yellow wheel-shaped perianth. Price, 6c each; five for 25c.

MAXIMUS or HALE'S BEATEN GOLD—Large flower; rich yellow elegantly twisted perianth, trumpet deep golden, large, and well flanged. Price, 5 cents each; six for 25 cents.

***OBVALLARIS, "TENBY DAFFODIL"**—Elegantly formed medium sized flower of rich yellow. Splendid for forcing. Price, 7 cents each; four for 25 cents.

SANTA MARIA—Very deep rich orange-yellow. Perianth elegantly twisted; charming. Price, 6 cents each; 60 cents per dozen.

LARGE TRUMPET NARCISSUS

Two Colored Varieties—White and Yellow.

***GRANDIS**—Flowers of the largest size with broad, snow-white petals and a magnificent yellow tube. Very beautiful. A flower of great substance, and grand for cutting. Price, 5c each; six for 25c.

***HORSFIELDII**—(Empress.) The "Queen of the Daffodils." This variety is considered the best of all Narcissus. Try it. Very large flowers, pure white, with rich yellow trumpet. Very stately and beautiful, and one of the most elegant for ladies' corsage wear. This magnificent flower was raised by a Lancashire weaver—John Horsfield—and it has made him famous. Price, 8 cents each; four for 25 cents.

***GIANT PRINCESS**—(Ajax Princes.) A magnificent flower. One of the finest specimens of the Trumpet type. Cream perianth with golden-yellow trumpet. Price, 4 cents each; 40 cents per dozen.

SCOTICUS—The "Scotch Garland Flower," or "Large-Flowering Lent Lily." Large flowers of creamy-white, bright yellow trumpet elegantly flanged and serrated. Price, 5 cents each; 50 cents per dozen.

***VICTORIA**—This is a new variety of great merit. Pure white perianth with large yellow trumpet. Extra large flower. Try this variety. Price, 8 cents each; four for 25 cents.

THE TRUE POET'S DAFFODILS

Narcissus, with Miniature Saucer-Shaped Cups.

***POETICUS ORNATUS**—Large, beautifully formed, pure white flowers, with saffron cup, tinged with rosy-scarlet. Sweet-scented. A magnificent cut flower. Very early. This is our special favorite of all Narcissus. Try it. Price, 3 cents each; 30 cents per dozen.

POETICUS—The "Pheasant's Eye," or "Poet's Narcissus." Pure white flowers, with orange cup, edged with crimson. Sweet scented. Cannot be forced. Price, 2 cents each; 15 cents per dozen.

POETICUS POETARUM—The flowers of this splendid variety are much larger and the orange rim more distinct in the cup. This beautiful variety will be welcomed as a decided improvement over the old Poeticus. Price, 3 cents each; 30 cents per dozen.

KING EDWARD VII—("Almira.") Earliest of all Poeticus. Very large flower; grand. Price, 4 cents each; 40 cents per dozen.

Chalice Flowered or Semi-Trumpet Narcissus

Including the Incomparabilis, Barrii and Leedsii Types.

ALBUS STELLA—(Incomparabilis.) Large white perianth with yellow trumpet. This is an old-fashioned standby. Price, 2 cents each; 20 cents per dozen.

AMABILIS—(Leedsii.) Perianth pure white, trumpet primrose-yellow, changing to pure white. Very desirable. Price, 3 cents each; six for 15 cents.

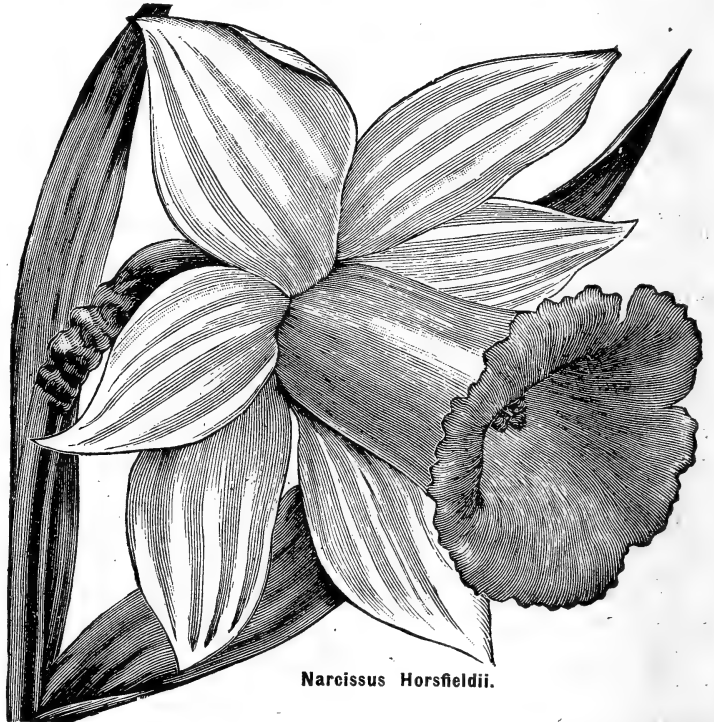
***BARRII CONSPICUOUS**—(Barrii.) Broad primrose perianth and elegantly expanded half trumpet, heavily stained orange-scarlet. Price, 3 cents each; eight for 20 cents.

CYNOSURE—(Incomparabilis.) Primrose trumpet, with orange cup; elegant. Price, 3c each; 25c per dozen.

DUCHESS DE BRABANT—(Leedsii.) Perianth white, trumpet a beautiful shade of canary-yellow. Very fine. Price, 3 cents each; 25 cents per dozen.

***FIGARO**—(Incomparabilis.) Yellow perianth, large orange-scarlet trumpet. Very beautiful. Price, 3 cents each; 25 cents per dozen.

GLORIA MUNDI—(New.) (Incomparabilis.) Bright yellow perianth. Broad, well expanded, orange-scarlet cup. Extra fine. Price, 20 cents each.



Narcissus Horsfieldii.

KING ALFRED—(New.) (Incomparabilis.) Uniform golden-yellow. This variety stands unrivaled in size and beauty, with beautiful fluted trumpet, the king of Daffodils. Price 50 cents each.

***MRS. LANGTRY**—(Leedsii.) Pure white. A gem for forcing. Each bulb produces more than one flower stem. Price, 5 cents each; six for 25 cents.

***SIMPLEX**—(Incomparabilis.) Sulphur-yellow trumpet and perianth. Fine for forcing. Price, 2c each; 20c per dozen.

***SIR WATKIN**—(The Giant Incomparabilis or Welsh Giant Daffodil.) Hardy. Perianth rich sulphur-yellow, trumpet yellow, tinged orange. The best of all; very beautiful; extra. Price, 6 cents each; five for 25 cents.

WHITE WINGS—(New.) (Incomparabilis.) Broad, white perianth; dainty cup of clear yellow, beautifully crinkled. Price, 15 cents each.

ALL WHITE TRUMPET NARCISSUS

***ALBICANS**—The "White Spanish Daffodil," creamy-white, with a silvery-white trumpet, slightly flushed with primrose and elegantly recurved at the brim. Price, 5 cents each; six for 25 cents.

MRS. THOMPSON—One of the earliest and most beautiful varieties. Both trumpet and perianth are clear white. One of the best for forcing. Price, 5 cents each; 6 for 25 cents.

TRIANDRUS ALBUS or "Angel's Tears"—This is a most charming variety and much sought after; pure white flower. Price, 3 cents each; 30 cents per dozen.

HOOP PETTICOAT, OR MEDUSA'S TRUMPET NARCISSUS

Bold and shapely flowers. They are gems for pot culture, and bear from six to twelve flowers to each bulb. For planting in groups around the edges of lawns, and especially for edgings for beds, this class is superbly adapted. The bulbs of the Hoop Petticoat varieties are all small, but produce handsome flowers.

BULBOCODIUM—The "large Yellow Hoop Petticoat," rich golden-yellow. 4 cents each; 40 cents per dozen.

CITRINUM—The "large Sulphur Hoop Petticoat." Large sulphur flowers. Unique and beautiful. 4 cents each; 40 cents per dozen.

ALGERIAN WHITE HOOP PETTICOAT—(Monophyllus or Clusii.) Pure snow-white, very early, will bloom at Christmas if potted in September. 5 cents each; 50 cents per dozen.

DOUBLE NARCISSUS, OR DAFFODILS

Double (Camellia-flowered) Narcissus—Yellow Variety. ***INCOMPARABLE**, (fl. pl.)—"Butter and Eggs." Full double flowers of rich yellow, with orange nectary. Splendid forcing variety. 4c each; 35c per dozen.

GARDENIA-FLOWERED WHITE VARIETY

ALBA PLENA ODORATA—"The Double White Poet's Narcissus." Snow-white Gardenia-like flowers, exquisitely scented. 3 cents each; 30 cents per dozen.

TWO COLORED VARIETIES—White and Yellow

There are no finer Narcissus than the Orange and Sulphur Phoenix. Especially is the Sulphur Phoenix extra fine. The flower is as large almost as a Peony. Be sure and try them.

***ORANGE PHOENIX**—"Eggs and Bacon." This beautiful variety has double white flowers, with orange nectary. Splendid for pot culture and cutting. 4c each; 40c per dozen.

***SULPHUR (or Silver) PHOENIX**—"Codlins and Cream." Large creamy-white flowers with sulphur nectary; exquisite corsage flower and fine for growing in pots. 6c each; five for 25c.



Hoop Petticoat, Bulbocodium.

DOUBLE TRUMPET DAFFODILS

VAN SION—The famous "Old Double Yellow Daffodil." Rich golden-yellow perianth and trumpet. One of the best forcing sorts, immense quantities being grown for this purpose, both in Europe and America. 4 cents each; four for 15 cents; 35 cents per dozen.



Double Van Sion.

four flowers each. The pure white petals and gold cup of some varieties, the yellow with the orange cup of others, and the self whites and yellows, render them great favorites.

NOTE—Polyanthus Narcissus, although not considered hardy, have lived out for two winters in the vicinity of Boston with a slight covering of straw and leaves, and produced much larger flowers, and more of them, than when grown in the house in pots.

WHITE VARIETIES

***PAPER WHITE**—(Totus Albus Grandiflora.) Pure snow-white flowers in clusters. This variety is perhaps more largely forced for cut flowers than any other, millions of them being used for the large flower markets of the world. 4 cents each; 40 cents per doz.

***THE PEARL**—Pure white. Large flowers. Extra fine. A gem for cutting. 6 cents each; 65 cents per dozen.

YELLOW AND BICOLOR VARIETIES

***GRAND MONARQUE**—Large, pure white, with lemon cup. Extra fine. This variety is one of the finest of all Polyanthus Narcissus. 5 cents each; six for 25 cents.

GLORIOSA—Pure white, with orange cup. Very fine and distinct. Early, splendid to force. 4 cents each; 40 cents per dozen.

***GRAND SOLIEL d'OR**—Rich yellow, with reddish orange cup. A favorite bedding and cutting variety. 4 cents each; 40 cents per dozen.

***NEWTON**—Very fine yellow with orange cup. Distinct. Extra free bloomers. 5 cents each; 50 cents per dozen.

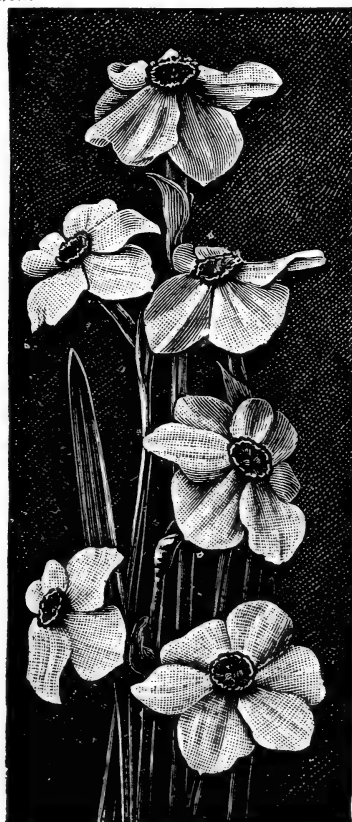
DOUBLE VARIETY

***DOUBLE ROMAN**—Clusters of white flowers, with double citron colored cups. It is very early, and grown principally and largely for forcing. 4 cents each; 40 cents per doz.

POLYANTHUS NARCISSUS

or Bunch-Flowered Daffodils

The Polyanthus variety of Narcissus are not only beautiful, but deliciously sweet-scented and of the very easiest culture. Very free flowering and suitable for window garden, conservatory or garden, continuing long in bloom. They have tall spikes of bloom, bearing from six to twenty-



Poeticus Ornatus.

The Chinese Sacred or Oriental Narcissus

A VARIETY OF
POLYANTHUS NARCISSUS

The "Shui Sin Far," or Water Fairy Flower, Joss Flower, or Flower of the Gods, etc., as it is called by the Celestials, is a variety of Narcissus, bearing in lavish profusion chaste flowers of silvery-white with golden-yellow cups. They are of exquisite beauty and entrancing perfume. It is grown by the Chinese according to their ancient custom, to herald the advent of their new year and as a symbol of good luck. The bulbs are grown by a method known only to themselves, whereby they attain great size and vitality, insuring luxurious growth and immense spikes of flowers. In fact, the incredibly short time required to bring the bulbs into bloom (four to six weeks after planting) is one of the wonders of nature. "You can almost see them grow," succeeding almost everywhere with everybody. They do well in pots of earth, but are more novel and beautiful grown in shallow bowls of water, with enough fancy pebbles to prevent them from toppling over when in bloom. A dozen bulbs started at intervals will give a succession of flowers throughout the winter. We are importing direct from China immense bulbs of the true large-flowering variety. 15 cents each, four for 50 cents.



Chinese Sacred Narcissus.

REMEMBER, You must buy
Hyacinths, Tulips, etc., NOW.
You can not buy and plant
them in the springtime.

GIANT GOLDEN SACRED LILY

(Jonquil Campernelle Regulosus)

The flowers of this beautiful Sacred Lily are almost identical with the Chinese variety, except that they are of the most lovely shade of deep golden-yellow, making a fine contrast with the white bloom of that noted kind. The bulbs are not nearly so large, but the trusses of flowers are of good size, making this a charming bulb for house culture. Grows in water, like the old variety. 3 cents each, six for 15 cents, 25 cents per dozen.

TRY A DOZEN, AND BE DELIGHTED

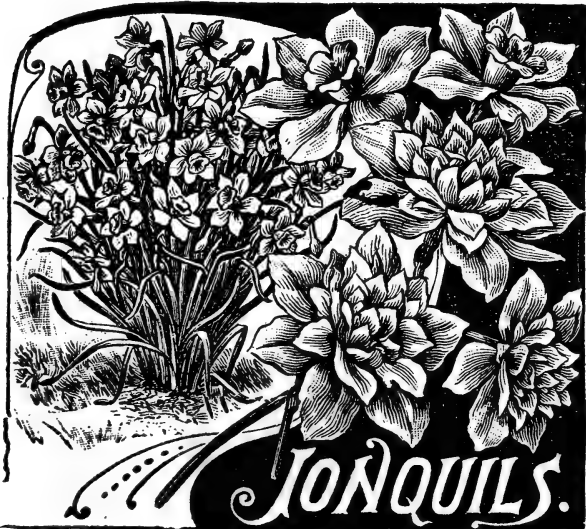
JONQUILS

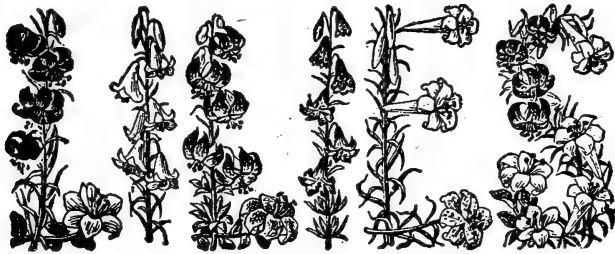
Much prized for their charming large golden and deliciously sweet-scented flowers, perfectly hardy and flowering very early in the spring; also admirably adapted for winter flowering in the house—three to six bulbs in a four or five-inch pot.

***JONQUIL SIMPLEX**—Single Sweet-Scented Jonquil. A bright yellow perianth, deeply lobed and very fragrant. 15 cents per dozen.

***JONQUIL PLENA**—(Double Sweet-Scented Jonquil.) Flowers full, double, and of golden-yellow color. 4 for 10 cents, 25 cents per dozen.

JONQUIL CAMPERNELLES—The best of the Jonquil section. Perianth six-lobed, spreading, of a light yellow color, sweet-scented. 4 for 10 cents, 20 cents per dozen.





FOR FALL PLANTING

"The fairest of all things that blossom and grow,
Sweet as the summer and pure as the snow,
Is the Lily that tells,
Like the glad Easter bells,
Once more the sweet story which all hearts should know."

LILIUM GIGANTEUM

The True Bermuda Easter Lily

This peerless Lily is the greatest acquisition to floriculture made in many years. Their profusion of bloom, the remarkably short time required to bring them into flower, and the certainty to produce abundant bloom, and also the ease with which they can be manipulated to be flowered at any desired period, such as Christmas, Easter and other special occasions, make them invaluable. Flowers are delightfully fragrant, pure waxy white, of great substance, and if cut as soon as they are open or partially open they can be kept for two weeks. A short time only is required to bring them into bloom. Bulbs potted in August can be had in flower in November if desired. A succession of bloom can be kept up from November to May by bringing the pots of rooted bulbs in from cold frames at intervals during the winter. The quantity of bloom produced is marvelous. Blooming plants in pots form typical Easter offerings and presents, for decoration of window, table, house or church. As a garden Lily it is of great beauty, being entirely hardy except in Northern climates, where it requires a protection of leaves or litter to the depth of five or six inches. Price, 20 cents each; three for 50 cents.



Easter Lily.

LILIUM CANDIDUM

The old-fashioned pure white garden Lily, also known as Easter Lily, or Annunciation Lily. One of the hardiest. Flowers snow-white, with heavy yellow stamens and sweetest fragrance. It bears from five to twenty blossoms. This is the most decided variety we have in expressing its preference for a planting time. It must be planted in the early autumn to succeed well, as it makes its leaf growth at once after planting, and prepares itself for early flowering. The bulbs are sometimes kept in cold storage for spring sales, but never do quite so well. Customers will do well to plant a bed of twenty-five or more for a permanent bed or border. Price, 20 cents each; three bulbs for 50 cents; \$1.50 per dozen.

LILIUM GIGANTEUM and CANDIDUM are now ready. The other varieties cannot be sent until November. Order now, and we will file your order, and send as soon as we receive them from abroad.

A GREAT OFFER

The set of seven lovely Lilies on this page, all distinct, costing \$1.50, sent for only \$1.25.

LILIUM AURATUM

The Gold-Banded Lily of Japan

This is the highest type of flowering bulbous plants. The most beautiful and fragrant of all our list. The flowers are of immense size, being fully twice as large as those of almost any other Lily. The new bulbs are brought from Japan for us each year, and only such will give best results. They are shipped to us wrapped in a ball of clay, and arrive plump and sound, every one ready to bloom. Fine bulbs, 20 cents each; three for 50 cents; \$1.75 per dozen, postpaid.

TIGRINUM SIMPLEX

The single Tiger Lily, imported. This is a great favorite. There is no better Lily grown. Price, 20 cents each; three for 50 cents.

TIGRINUM FLORE-PLENO

Bright orange, spotted black and very double. Price, 25 cents each; three for 60 cents.

LANCIFOLIUM RUBRUM

A beautiful bright rose, spotted with a rich velvety-crimson. Price, 20 cents each; three for 50 cents.

LANCIFOLIUM ALBUM

One of the most beautiful of all Lilies. Pure white and very fragrant. Price, 25 cents each; three for 60 cents.

LILY OF THE VALLEY

The modest bell-shaped flowers, of the purest white, are highly prized for cutting purposes, and for flowering in pots in winter they are exceedingly well adapted. Beautiful and most interesting ornamental designs for the parlor or conservatory may be produced by planting Lily crowns in Crocus pots or in pyramidal pots made especially for this purpose and pierced with holes. They will last several weeks in beauty. By taking them in at intervals a succession of different designs may be kept up all winter. They are also forced in immense quantities by florists, but they are the most charming when grown in large patches in partially shaded localities around the lawn, near the borders of streams, lakes, etc., being perfectly hardy. Price, 3 cents each; 30 cents per dozen.



Lily of the Valley.

TRITELEIA UNIFLORA

This is one of the choicest additions to winter-flowering bulbs that has been offered in many years. The bulbs are small, and several can be planted in a pot, each one of which will send up several flower scapes, bearing star-shaped blossoms one inch in diameter, pure white, elegantly lined with celestial blue. As the flowers follow each other successively and last a long time before fading, a pot of these bulbs is never without flowers for several months in midwinter. They are also quite hardy, and can be planted in the open ground, where they will bloom elegantly in the early spring. We earnestly advise all lovers of flowers to plant this beautiful gem. It is sure to thrive. Fine bulbs, 10 cents per dozen.



Triteleia Uniflora.

WINTER BLOOMING FREESIAS

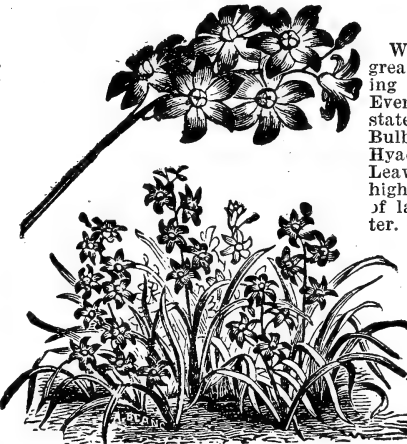
Freesia Refracta Alba—No description can do adequate justice to this beautiful plant. The flowers are two inches long and about the same in width, shaped like miniature Gladioli, and borne in clusters of six to ten on depressed horizontal scapes. The body of the flower is pure white with lower segments spotted lemon yellow. The perfume is most delicious, being a mixture of Mignonette, Violet and Jasmine, and one plant is sufficient to perfume a large room without the overbearing perfume of Hyacinths or Tuberoses. The plant has tooth-shaped bulbs and flat, spreading leaves. Its cultivation is the simplest, requiring only to be potted in October, to be watered sparingly at first, placed in a sunny window, and watered more as growth progresses. When out of flower, store in some place, and repot at proper season in fresh soil for another year's growth. Six fine selected bulbs for 15 cents, twelve for 25 cents.

TRITELEIA LAXA

This is a new variety, bearing ten flowers to the stalk instead of one flower like the Uniflora. Elegant. Be sure and try it. 20c per dozen.

Scilla Sibirica, or Squill

Star Hyacinths—*Scilla Sibirica* is one of the loveliest spring flowers. It has color almost as deep as the sky itself. Quite hardy, and flowers out of doors at the same time as the Snowdrop, in front of which it gives a charming effect. Planted in pots and kept indoors it may be had in bloom as early as Christmas. Its magnificent bright blue color makes it suitable for any decorations whatever. Two for 5 cents, 25 cents per dozen.



Scilla Sibirica.

ORNITHOGALUM ARABICUM

We introduce this as a new winter-blooming bulb of great beauty and value. In magnificence there is nothing like it among winter-blooming bulbs or plants. Even the grand Hyacinth must be preceded by the stately beauty of this flower. It is a native of Arabia. Bulb large and solid, closely resembling that of a Hyacinth, and requiring exactly the same culture. Leaves long and narrow, flower spikes 18 to 24 inches high, strong and graceful, bearing an immense cluster of large pearly-white flowers, having a jet black center. The individual flowers keep perfect many weeks before fading, so that for more than a month this grand spike of bloom is in full glory. Its durability is almost without an equal among flowers. Add to this its delicate aromatic fragrance, and we have a winter-bloomer which all must admit stands without a rival. Its culture is the easiest, as it will grow in any position in any window. A bulb can be planted in any four-inch pot, or several in a large pot or box. Pot in September, October or November. They can even be kept and planted as late as February 1st. For open ground culture they do well if protected from freezing severely. Large flowering bulbs, 5 cents each, or six for 25 cents.

IXIAS

The Ixias produce their beautiful flowers in spikes, and are of the most dazzling and brilliant colors, and sure to attract great attention. It is only a few years that they have been grown in this country to any great extent, but in that time, like the Freesia, they have become very popular. For pot culture in the house they give great satisfaction, being of easy culture and free bloomers. Half a dozen bulbs can be planted in a five-inch pot, and the display is magnificent. For open ground culture give them winter protection with leaves or straw. They are very cheap, and all lovers of odd and beautiful flowers should certainly add them to their collection. The sorts we offer are new and very fine. 10 cents per dozen.



Ixias.



Freesia Refracta Alba.



CROCUS VERNUS

That Bloom in the Spring

THE Crocus is one of the first flowers of spring, and one of the best for blooming in the house during winter. Half a dozen bulbs may be planted in a pot, and will make a very pretty show. For garden culture plant bulbs two inches deep and two or three inches apart. They are so cheap and pretty they ought to be found in every garden in abundance. They bloom splendidly when planted on the lawn among the grass. They lift their bright heads up through the sod very early, and give the lawn a charming aspect. The sorts we offer are especially strong and fine. Price, 15 cents per dozen; \$1.25 per hundred.

AMAZONE—Light blue, striped violet.
DANDY—A light blue, bordered with white.
CLOTH OF GOLD—Pure yellow, suffused with brown.

CLOTH OF SILVER—Beautiful white, striped lilac.
GIANT YELLOW—Deep golden-yellow; large and fine.
KING OF THE WHITES—Purest white; extra large.

PRESIDENT LINCOLN—Richest royal purple.
SIR WALTER SCOTT—Striped white and violet.
EXTRA FINE MIXED—All the above colors mixed.

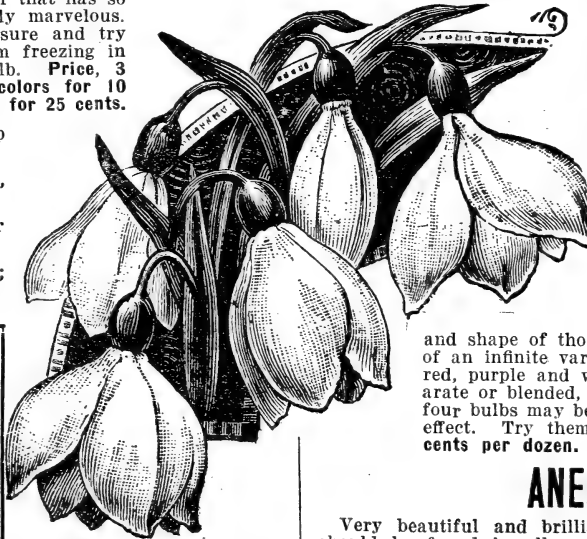
MONTBRETIAS

These are handsome flowering bulbs of the easiest culture; in fact, they are as easy to grow as Gladioli. The flowers are produced on long spikes and the richest shades of color imaginable. Indeed there is no flower that has so many gay, bright colors. Simply marvelous. They are cheap in price. Be sure and try them. Keep them dry and from freezing in the winter, like a Gladioli bulb. Price, 3 cents each, the four brilliant colors for 10 cents, or a dozen assorted colors for 25 cents.

CROCOSMIAEFLORA — Deep golden-orange, flushed red.
SOLIEL COUCHANT—Orange, with shades of vermilion.
GERBE d'OR—Bright, clear yellow.
POTTSH—Deep dazzling red; very showy.

NOTE

The above Montbretias are the handsomest flowers there are to cut for bouquets. Nothing finer.



Giant Snowdrops.

GIANT SNOWDROPS

Beautiful dwarf white flowers, pushing up through the snow in the spring, a habit from which arose this name. They are lovely little blossoms, and should be found in every garden.

Indoors they are equally pretty and easily brought into bloom. Being dwarf, they are usually planted along walks or the margins of beds. The Giant Snowdrops we offer are much superior to the common varieties, producing large flowers.
GIANT SINGLE SNOWDROP—(Elwesi.) Two for 5 cents, 15 cents per dozen, \$1.00 per 100.
GIANT DOUBLE SNOWDROP—Three for 10 cents, 30 cents per dozen, \$2.00 per hundred.

SPARAXIS

From the Cape of Good Hope, producing flowers about the size and shape of those of the Crocus. The colors are of an infinite variety. Pure white, yellow, orange, red, purple and violet are to be found, either separate or blended, in pleasing variegation. Three or four bulbs may be put in a four-inch pot with good effect. Try them; they are charming. Price, 10 cents per dozen.

ANEMONES

Very beautiful and brilliant spring-flowering bulbs which should be found in all gardens. They possess a beautiful range of very fine colors, such as brilliant scarlet, red, blue, rose, striped, carnation, etc. For pot culture they are very fine indeed, and succeed best if left in the same pot year after year without removing or disturbing.

SINGLE ANEMONES—All colors, mixed. Price, 10 cents per dozen.
DOUBLE ANEMONES—All colors, mixed. Four for 10 cents, 20 cents per dozen.

AMARYLLIS JOHNSONII

Lovely bulbous plants for winter or early spring blooming. Give plenty of water while growing. When through blooming, gradually withhold water, so that they may become dormant during the summer. Start again in the fall by repotting in fresh soil and increasing the supply of water gradually. This is the large crimson variety that is very popular. Immense Lily-like flowers of deep crimson, borne on strong stalks of from five to eight flowers. Very desirable. Fine bulbs, 40 cents each.

RANUNCULUS

This class of bulbous plants is among the finest of all flowers. The French Ranunculus, especially, are distinguished by great strength, size and beauty. They attain a height of ten to fifteen inches, and the hues and colors of their many varieties, varying from pure white and yellow to bright vermilion and crimson, are really beautiful. The Persian Ranunculus are a little smaller than the French, and also more dwarf. However, their colors are as fine, and exhibit the most beautiful shades, and are of the most graceful form. The Turban, or Turkish, Ranunculus differ very much from each other, and display lovely Oriental beauty of coloring. Can be grown easily in pots, or out of doors if protected.

DOUBLE PERSIAN RANUNCULUS—10 cents per dozen.
DOUBLE TURKISH RANUNCULUS—Five for 10 cents, 20 cents per dozen.
DOUBLE FRENCH RANUNCULUS—10 cents per dozen.

BERMUDA BUTTERCUP OXALIS

An Unrivalled Winter-Flowering Pot Plant.

This is one of the finest winter-flowering plants for pot culture that we have ever seen. It is such a strong, luxuriant grower that one bulb will be sufficient for a six or eight-inch pot. Place in a dark, cool position for a few weeks to root thoroughly, and remove to a sunny situation in the window or conservatory, in a temperature of about sixty degrees Fahrenheit, and the great profusion of bloom produced in uninterrupted abundance for weeks will astonish and delight you. Flowers of the purest bright buttercup-yellow. Well grown plants have produced as high as seventy flower stems at one time and over one thousand plants in one season. The flowers, and frequently the leaves, fold up at night, and open again the next morning; but when grown in a partially shaded situation the flowers remain open all the time. Properly treated the plants will flower in six weeks from the time the bulbs are planted.

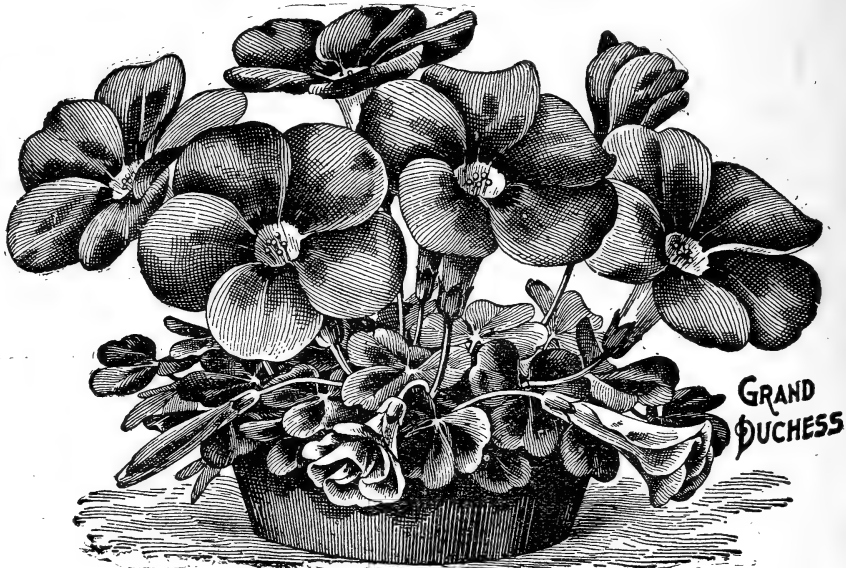
We do not claim the Bermuda Buttercup Oxalis to be strictly a new plant, but a greatly improved selection from Oxalis Cernua, grown in the congenial soil and climate of Bermuda until the bulbs have attained great strength, producing bulbs, plants and flowers larger and more luxuriant in all parts than the type. Excels all bulbous plants in profusion of bloom. It is graceful, and delights all who see it. Price, 3 cents each; 30 cents per dozen.

Fritillaria Meleagris

Snake's Head or Turk's Cap—Very early flowering bulbs, suitable either for garden or pot culture. In pots they bloom during January or February, and are very attractive. They resemble Lily flowers, and are borne on graceful, drooping stems. An attractive object to anyone's garden or window. Assorted colors, 5 cents each; six for 25 cents.

Allium Neapolitanum

This plant has graceful leaves from eight inches to a foot long, of the darkest green, forming a very cheerful mass. Each plant bears from one to three scapes, or trusses, of flowers, which are pure white, about one-fourth of an inch in diameter. Many of the trusses bear over one hundred flowers each. Five for 10 cents; 20 cents per dozen.



Oxalis.

OXALIS

These varieties of Oxalis are all for winter blooming. They make the most beautiful hanging pots and baskets, producing a mass of flowers all winter, which in brilliant and beautiful colors are truly charming. Winter-blooming Oxalis are always sure to please. Plant five or six bulbs in a six-inch pot. They commence growth immediately after planting. My mixture embraces pink, white, yellow, red, etc. Price for mixture of all colors, 10 cents per dozen.

MILK AND WINE LILY

Crinum Fimbriatum.

"I must tell you that Milk and Wine Lily has done famous work. It has developed nine fine blooms, and there are two unopened buds. We therefore gave it a free ride last Wednesday to our chapel services. It was admired by everybody. There were Bostonians and people from various towns to admire and enjoy it."—Mrs. E. Adams, Mass. A grand sort. The most beautiful of the Crinums. Its bulbs grow large, and its strong growing foliage is erect and sword-shaped; flowers in umbels, very large and showy, three to four inches in diameter, striped with white and carmine, and very fragrant. Hardy in the South. Fine bulbs, 25 cents each.



The Godfrey Calla Lily.

CALLA LILIES Everyone Needs a Calla for Winter Blooming. Here Are the Best.

THE DWARF CALLA—(Little Gem.) (Nana Compacta.) Grows ten to fifteen inches high, and produces many blooms. Price, 20 cents each.

CALLA ETHIOPICA—The old-fashioned sort; in three sizes. Small bulbs that will bloom, 10 cents each; large bulbs, 25 cents each; extra large bulbs, 50 cents each.

SULPHUR YELLOW CALLA, AURATA—Lovely sulphur-yellow flowers. This is becoming quite popular. Fine bulbs, 15 cents each.

THE GODFREY CALLA LILY, "Devoniensis"—Undoubtedly the finest thing ever sent out in the Calla line, and quite indispensable. Blooms all winter. Compared with the ordinary Calla, it gives three blooms to one; is snow-white and perfect in form. Blooms on very small plants, though it attains to a very large size with very large flowers. The new Godfrey Calla Devoniensis is a wonder. Blooming bulbs, 25 cents each.

GOLDEN YELLOW CALLA (Richardia Elliottiana)—Entirely distinct and unlike all other forms of yellow Callas; it has the same habit of growth as the ordinary white variety, with flowers of same size and shape, but of a rich,

clear, lustrous golden-yellow color; the foliage is dark green with a number of translucent creamy-white spots, which add much to its beauty. It is but a few years ago that this sold at a very high price. We are now able to offer strong, blooming bulbs at 35c.

BLACK CALLA (Arum Sanctum)—This is the famous Black Calla; it grows so very easily and produces Calla Lily shaped flowers that in color are coal black. This Lily produces the blackest flower of any plant in existence. It is simply jet black; stock is scarce. Price, 25 cents each; two for 40 cents.

CHIONODOXA LUCILIAE

(Glory of the Snow.) One of the most lovely flowering spring bulbous plants ever introduced, producing spikes of lovely azure-blue flowers with pure white centers. It is one of the earliest of all flowers, blooming before the Crocus, and sure to be more than satisfactory to those who plant it. For winter-blooming this bulb is also lovely. Strong home-grown bulbs, 3 cents each; four for 10 cents; 25 cents per dozen.

IRIS

THE RAINBOW FLOWER

IRIS

The Iris are fast coming into favor. They are entirely hardy and increase rapidly when planted in a flower garden. By planting the different families of Iris you will have bloom from the tenth of May till the middle of July. To get the best results Iris are best planted in the fall, although they can be planted any time in the spring of the year.



Iris Germanica—German Iris.

Iris Kaempferi

THE BEAUTIFUL JAPANESE IRIS

They are perfectly hardy, producing a dozen flower spikes three feet in height, each spike bearing from two to four enormous blossoms eight to ten inches across and of the most delicate and beautiful colors, markings and combinations. They are in flower from June 20th till July 20th. They will thrive in almost any situation except where the water stands. The meaning of the Japanese names are translated. **Price, 20 cents each; three distinct varieties for 50 cents; set of eight fine sorts for \$1.25.**

- GEISHO-UI (Fairy's Gown)**—Deep mahogany-red, base of petals lighter.
- GEKKI-NO-NAMI (Moonlight on Waves)**—Large double white, center gold and yellow.
- ISO-NO-NAMI (Shallow Waves)**—Fine porcelain-blue, blotched deeper, center rosy-lilac flushed with gold.
- KUMA-FUNGIN (Excited Bear)**—Large deep violet-blue; very fine.
- KUMOMA-NO-SORA (Sky Amidst the Clouds)**—White edged and flushed with blue, center banded yellow.
- KUMO-NO-OBİ (Band of Cloud)**—Crimson-amaranth, shaded lighter; lavender center, with base of gold.
- SENJO-NO-HORA (Bottomless Cave)**—Blotched and veined violet-red, center of purple and gold.
- SHICHIUKWA (Flower in Wine)**—White bordered reddish-amaranth, center flushed gold.



Iris Kaempferi or Japanese Iris.

Iris Germanica

(German Iris)

The "Fleur de Lis" of France

No other flower has so many combinations of color, especially of the delicate and unusual shades, and the name Rainbow Flower is most fitting. They are absolutely hardy, as beautiful in form, texture and coloring as any Orchid, and many are delightfully fragrant. They are not particular as to soil; will grow where anything will, but do better in well-drained location.

There is nothing prettier than this German Iris, blooming from May 10th to June 10th. The colors are gorgeous and they completely hide the plant. Be sure and plant some German Iris. **Price, 10 cents each; the set of six for 50 cents.**

- FLORENTINA**—Creamy-white, faintly flushed lavender; fragrant and early. This is the Orris root of commerce, being used for the manufacture of toilet powder. The roots are delicately perfumed.
- HONORABILIS, or Sans Souci**—Standard golden-yellow, falls rich mahogany-brown; very effective.
- MADME CHEREAU**—Standard and falls white, elegantly frilled with a wide border of clear blue; very beautiful.
- PALLIDA DALMATICA, or Heavenly Blue**—Standard delicate lavender; falls clear deep lavender; flowers very large and extra fine.
- PURPLE PRINCE**—Standard intense deep violet-blue; falls velvety dark purple; exceedingly rich and striking.
- QUEEN OF MAY**—A lovely shade of rosy-pink, tinted with lilac; beautiful.

Iris Hispanica

(SPANISH IRIS)

The Spanish Iris are grown in England by the millions for cutflowers. Perfectly hardy. They are very recommendable. The colors and shape of the flowers resemble the most beautiful Orchids. The colors are very striking, while the substance of the flower is much more permanent than the other varieties of Iris, causing them to last in bloom much longer. Don't fail to try a bed of Spanish Iris.

Chrysolora—Extra fine golden-yellow, the best yellow Spanish Iris in cultivation for forcing and for planting outdoors. Extra, 15 cents per dozen, \$1.25 per hundred, postpaid.

Blanche Superbe—A grand pure, white variety; has great substance in the flowers. The best white Iris for forcing. 15 cents per dozen, \$1.25 per hundred, postpaid.

Count of Nassau—The finest dark blue kind in cultivation; the flower has an agreeable Honeysuckle-like perfume. 20 cents per dozen, \$1.50 per hundred, postpaid.

Darling—A beautiful shade of light blue. A splendid large flower; the finest of its color. 15 cents per dozen, \$1.25 per hundred.

La Reconnaissance—The most distinct of all the Spanish Iris. Grand flowers of a beautiful olive color; extra. 15 cents per dozen; \$1.25 per hundred.

Remember that the Spanish Iris as named above are perfectly hardy everywhere, and they force finely in pots—put one-half dozen bulbs in a six-inch pot.

Spanish Iris Mixed==All Colors

15c per dozen, \$1.20 per 100 postpaid.



Iris Anglica—English Iris.

Iris Anglica

(ENGLISH IRIS)

This is a lovely section of bulbous Iris, growing about three feet in height, producing enormous flowers of every shade of color, such as pure white, pale blue, magenta-purple, dark blue, white spotted lilac, violet and red, purple and violet, blue and red, etc., including such well known varieties as **Damon, Grande Blanche, Wapen van Rotterdam, La Unique, Venus, Vainqueur**, and others, including every shade and combination known in this family. All hardy, all easily grown and cannot be too strongly recommended. Plant early and cover with some light material to protect from frost the first season. 5 cents each, six for 25 cents, 40 cents per dozen.



Iris Hispanica—Spanish Iris.

Iris Pavonia

(PEACOCK IRIS)

This beautiful Iris is very attractive. It is a sky blue color, with a peacock eye of dark blue on each of the petals. It certainly is a gem. Price, 5 cents each, six for 25 cents, 40 cents per dozen.



Iris Pavonia—Peacock Iris.

NOTE—The Iris are perfectly hardy, and should be planted in the fall for spring blooming. **EVERY BULB OR RIZOME WILL FLOWER THE FIRST YEAR.**

SPLENDID PEONIES, Hardy Everywhere

"Aristocrat of the Flowers"



"Peonies for Pleasure"

This book of "Peonies for Pleasure" gives information on Peony history; soil and plants to use; how and when to plant; fertilizers and how to apply, and describes the most extensive planting of really valuable Peonies ever gathered together under the sun; describes the old and the new, as well as the plebeian and aristocrat of the Peony family. If you want information on the plant that stands next to the Rose in beauty, that is practically known to the amateur as simply a red, white and pink Peony, then send today for "Peonies for Pleasure."

THE wonderful improvement made during recent years in these old-fashioned hardy plants has brought them into renewed popularity. The gorgeous flowers, which rival the finest Roses in size, form and color, are produced in great abundance. After once being planted they require little care and attention, thrive anywhere, and are absolutely hardy even in the coldest climates; each year after planting they grow into greater value, producing more and more flowers. They are not troubled with insect pests. Try some of our fine Peonies, and see what grand flowers they are. Get it out of your head that there are only Red, White and Pink Peonies to illustrate at flowering time. People who visit our field will say, "I have Pink and White Peonies. I desire only Red ones," but when they are shown the Pink and White, they invariably exclaim, "How grand! I have none like them." There is as much difference in Peonies as there is in Roses.

G. & R. SPECIAL COLLECTION OF PEONIES

To those who do not care for the nomenclature of the Peony we have made up several collections and here offer as an aid to making selections. Patrons will find these varieties embrace a wide range of color and form, and are exceptionally meritorious.

BARGAIN COLLECTION This collection embraces the Peonies of merit that are a great bargain at the prices here quoted.

68—Achille	\$0.25	3—Humei	\$0.25	40—Queen Victoria	\$0.25
41—Duchess de Nemours25	106—Madame Bollet25	29—Sulfurea25
79—Edulis Superba25	19—Madame Calot25		
126—Emily Hoste25	136—Madame Thouvenin25	Total	\$3.00
38—Fragrans25	61—Ne Plus Ultra25	The Bargain Collection for	\$2.50

POPULAR COLLECTION This collection includes a list of choice varieties at popular prices. Much lower in cost than you can buy elsewhere.

114—Agida	\$0.35	4—Floral Treasure	\$0.35	169—Philomele	\$0.35
2—Berlioz35	16—Mme. de Verneville35	26—Souv. de l'Expo. Universelle35
11—Canari35	32—Mme. Forel35		
28—Dr. Bretonneau35	15—Mlle. Leonie Calot35	Total	\$4.20
104—Festiva35	10—Marie Stuart35	The Popular Collection for	\$3.50

CHALLENGE COLLECTION This collection covers the entire range of form and color in the Peony. We challenge comparison as to their great beauty and to the very low prices we offer them. Not a single Peony here will disappoint you.

141—Albatre	\$0.50	30—Festiva Maxima	\$0.50	35—Meissonier	\$0.50
98—Andre Lauries40	103—La Tulipe50	78—Rubra Superba50
34—Charlemagne40	131—Madame Crousse35		
97—Dorchester50	31—Marie Lemoine40	Total	\$5.30
22—Duke of Wellington40	151—Mathilde de Roseneck50	The Challenge Collection for	\$4.50

TRIUMPH COLLECTION These Peonies are one and all a marked triumph of the hybridizer's skill and patience. All will be sure to please you.

102—Asa Gray	\$0.60	67—Golden Harvest	\$0.50	18—Mlle. Rousseau	\$0.60
170—Auguste Villaume60	46—Jeny Lind50	50—Princess Beatrice60
128—Couronne d'Or50	27—L'Ecletante50		
119—Dr. Boisduval60	149—La Rosiere50	Total	\$6.50
25—Felix Crousse50	159—La Perle50	The Triumph Collection for	\$5.25

THE ENTIRE FOUR COLLECTIONS ON THIS PAGE, FORTY-EIGHT VARIETIES, COSTING \$19.00, SENT FOR REMITTANCE OF ONLY \$14.00, BY EXPRESS, YOU TO PAY EXPRESS CHARGES.

TIME TO BUY PEONIES DURING THE FALL SEASON

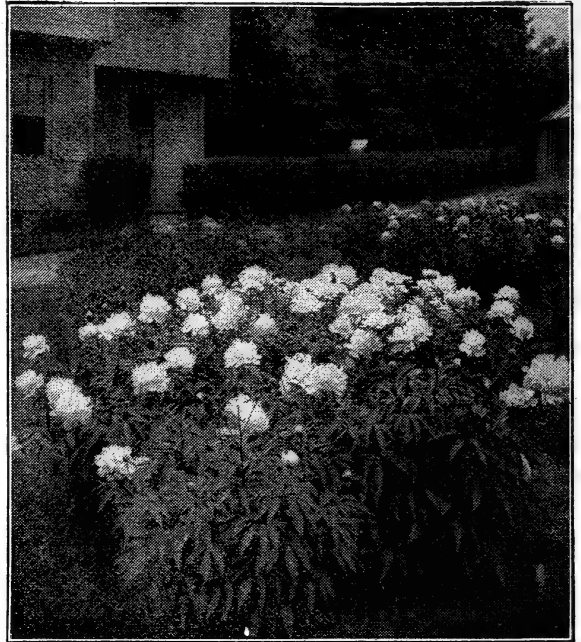
The proper time to buy and plant Peonies is from September 1st until the ground freezes up. The plants we offer are field-grown divisions with two to five or more eyes, commonly known as one-year plants. For prices on two and three-year-old roots send for our "Peonies for Pleasure"; it prices all the different sizes we have to offer.

For Peonies, both new and old varieties not named in this Catalog, see "Peonies for Pleasure." Write today for it.

ALPHABETICAL LIST OF PEONIES

YOU MAY ORDER BY THE NUMBER PRECEDING THE VARIETIES OR BY NAME, OR, BETTER STILL, IN ORDERING USE BOTH NUMBER AND NAME.

- 68—ACHILLE** (Calot, 1855.) Fine large five-inch bloom, very floriferous; opens light flesh-colored pink, finishing blush-white, with an occasional creamy spot; somewhat resembling an immense Carnation; an excellent variety for all purposes. 25 cents.
- 114—AGIDA** (Origin unknown.) A grand bright red Peony as in contradistinction to the crimson that are so prevalent among the reds. Very bright and showy. A fine color. 35 cents.
- 141—ALBATRE** (Crousse, 1885.) Large convex bloom. Color milk white, has ruby markings on some of its petals. 50 cents.
- 98—ANDRE LAURIES** (Crousse, 1881.) Rosy-red; very free late bloomer; an old and well-known variety, considered very useful; probably the most widely planted of any Peony. 40 cents.
- 102—ASA GRAY** (Crousse, 1886.) Large, full imbricated Rose-formed bloom; grand petals salmon-flesh; center very full and perfectly formed; flesh-pink, delicately dotted and flaked with carmine and lilac; strikingly imposing and valuable; a most unusual sort. From the formation of the flower it is designated as a double-decker. 60 cents.
- 170—AUGUSTE VILLAUME** (Crousse, 1895.) A uniform color throughout the entire flower of rich violet-rose; grand. 60 cents.
- 2—BERLIOZ** (Crousse, 1886.) Enormous, full globular imbricated bloom; bright currant-red; petals tipped silver. 35 cents.
- 11—CANARI** (Guerin, 1861.) Primary petals, white flushed pink with deep primrose-yellow center. Sweetly fragrant and early. 35 cents.
- 34—CHARLEMAGNE** (Crousse, 1880.) A Peony that has many admirers; blooms late. Color a delicate tint of lilac or heliotrope. Grand. 40 cents.
- 128—CROWN OF GOLD** (Couronne d'Or.) (Calot, 1873.) Immense, very full, ball-shaped bloom; pure snow-white, with golden-yellow reflex; carmine edges on some center petals. This variety will cause you to stand up and take notice. 50 cents.
- 28—DR. BRETONNEAU** (Verdier, 1854.) This is the famous "Lady Leanora Bramwell." Delicate silvery-rose with lively pink center; a great beauty. 35 cents.
- 119—DR. BOISDUVAL** (Guerin, 1850.) This Peony is conspicuous among the reds by its brilliant velvety dark maroon color. The coloring is simply dazzling. Flowers very full and double; extra fine. 60 cents.
- 97—DORCHESTER** (Richardson, 1870.) Late, free bloomer; color delicate salmon-flesh. We think this is one of the prettiest Peonies grown. Grand for all purposes. 50 cents.
- 41—DUCHESE DE NEMOURS** (Calot, 1856.) Superb cup-shaped; sulphur-white flowers, fading to pure white. In all Peonies there is nothing so exquisitely chaste and beautiful as this variety in the half open bud state; excels as a cut flower. Don't omit it. Late. 25 cents.
- 22—DUKE OF WELLINGTON** (Calot, 1859.) One of the grandest flowers in our whole collection. Very large, high built flowers of immaculate white. Simply grand. 40 cents.
- 79—EDULIS SUPERBA** (Lemon, 1824.) Beautiful brilliant pink, with silver reflex; large, well-formed, full flower on strong stem; blooms early with Festiva Maxima. 25 cents.
- 126—EMILY HOSTE** (Origin unknown.) A beautiful creamy-white, sweetly fragrant; a grand flower. 25 cents.
- 38—FRAGRANS** (Sir Joseph Banks, 1805.) Soft delicate pink, interspersed with salmon; an exceedingly good, perfect bloom and a pretty flower; highly fragrant. 25 cents.
- 104—FESTIVA** (Donkelaar, 1838.) Blooms of the largest size, double to the center; pure white, marked with crimson flecks. Extra. 35 cents.
- 30—FESTIVA MAXIMA** (Mieliez, 1851.) This is not only the finest white in existence, but in most quarters it is regarded as the queen of all the Peonies. Mr. Harrison says: "This flower has reached the ultimate beyond which we cannot go." It combines enormous size with wondrous beauty, often seven to eight inches in diameter; color snow-white, flecked with an occasional clear purple spot on edge of center petals; in addition, it is very fragrant; a glorious flower, impossible to describe; magnificent. 35 cents.
- 25—FELIX CROUSSE** (Crousse, 1881.) All Peony enthusiasts are familiar with the fact that it is difficult to get a red Peony that is a self color—that is, a full, rich, even shade of red without being suffused with a shade of another color. Felix Crousse fills the bill. A rich, even, brilliant ruby-red, exceptionally fiery, bright and effective; very large, full bell-shaped bloom. I place this in the front rank of all red Peonies—nothing like it in color. 50 cents.



Showing how to plant Peonies Effectively.

- 4—FLORAL TREASURE** (Rosenfield, 1900.) Very large and full; clear pink, shading to lighter at center; a splendid hemisphere of fragrance; long, strong stems to uphold the big bloom, sometimes six inches across; very vigorous and floriferous. 35 cents.
- 67—GOLDEN HARVEST** (Rosenfield, 1900.) Very striking variety, producing large tri-colored blooms, the guard petals being blush-pink, with a distinct blush-white color, and deepening to canary-yellow, a few of the center petals tipped and striped with light crimson. This Peony combines cream, gold, white, pink, salmon, peach and apricot, the total color effect of the flower creamy-pink; strong, delicate fragrance; a splendid bloomer; extra fine. 50 cents.
- 3—HUMEI** (Anderson, 1810.) Very large, compact and striking cherry-pink flower; among the very best; highly cinnamon-scented; graceful in habit and grown very largely for cut flowers and valuable for landscape work. 25 cents.
- 46—JENNY LIND** (Parsons, 1860.) Midseason; large bloom on long stem; strong grower, free bloomer; color bright pink, silvery reflex, with narrow white petals interspersed with center petalage; striking variety. 50 cents.
- 03—LA TULIPE** (Calot, 1872.) Enormous globular, fragrant flowers; delicate rose shading to ivory-white, with center petals tipped carmine. Again we quote Harrison: "There is no Peony so attractive in bud as this—first a ball interlaced with green, red and light—as it grows these interlacings become pronounced. There is no bloom whose unfoldings you watch with greater interest. It finally opens a solid ball of softest blush, with streaks of carmine. There it sits in all its beauty, a glorious flower in a chalice of veined marble, emitting a delightful perfume." This Peony belongs distinctly in a class by itself. 50 cents.
- 27—L'ECLETANTE** (Calot, 1860.) Flowers double and full; color deep brilliant velvety crimson. Extra fine. 50 cents.
- 159—LA PERLE** (Crousse, 1885.) Large globular flowers; color white overlaid with lilac, blush center. 50 cents.
- 149—LA ROSIERE** (Crousse, 1888.) Blooms from two to five on a stem. Pure white, with golden-yellow center. 50 cents.
- 106—MADAME BOLLET** (Calot, 1867.) Large, very double flowers; clear rose, with white reflex, linguated with carmine; late bloomer. 25 cents.
- 19—MADAME CALOT** (Mieliez, 1856.) This is the freest flowering of all Peonies. It is known in Holland as the Glory of Boskoop. Flesh white shaded salmon; large convex flower, fine buds; extra for cut flowers. 25 cents.



Peony La Tulipe.

- 136—**MADAME THOUVENIN** (Crousse, 1881.) Brilliant rosy-red, finished carmine and lilac. Grand. 25 cents.
- 131—**MADAME CROUSSE** (Calot, 1866.) Immense size, forming a huge pyramid of delicate baby-pink, changing to pure white; ethereally beautiful. 35 cents.
- 16—**MADAME DE VERNEVILLE** (Crousse, 1885.) One of the most charming varieties on the market. Pure white, full and double. Extra. 35 cents.
- 32—**MADAME FOREL** (Crousse, 1881.) Enormous, very full double flowers; color glossy deep pink. Known as the "Princess of Pink Peonies." 35 cents.
- 15—**MADMOISELLE LEONIE CALOT** (Calot, 1861.) The color is a delicate rosy-white with a soft lilac-pink center, dotted heliotrope-pink. 35 cents.
- 18—**MADMOISELLE ROUSSEAU** (Crousse, 1886.) Large, full, finely shaped flower; sulphur-white with delicate blush center; extra fine. A prominent Peony expert on seeing this superb variety said that not a root of it should be sold for less than three dollars each. 60 cents.
- 10—**MARIE STUART** (Calot, 1856.) Large bloom, coming in clusters; outer petals soft pink; center pink and sulphur-white; very chaste bloom. This is a variety that pleases everybody. 35 cents.
- 31—**MARIE LEMOINE** (Calot, 1869.) Enormous sulphur-white, massive bloom, delicately shaded chamois, with narrow carmine edge; a sort the Peony enthusiast raves over, but is unfortunately very scarce. Without question the grandest of all white Peonies. You positively cannot afford to leave this variety out of your collection. It is a wonder. We have a fine stock. 40 cents.
- 151—**MATHILDE DE ROSENECK** (Crousse, 1883.) Soft flesh-pink shading deeper towards the center with shadings of chamois, petals bordered with silver and occasional narrow edgings of bright carmine; beautiful and distinct. 50 cents.
- 35—**MEISSONIER** (Crousse, 1886.) Deep, dark, rich red. In the cut flower market it is known as the American Beauty Peony; extra fine. 50 cents.
- 61—**NE PLUS ULTRA** (Miellez, 1856.) Enormous flat imbricated bloom, bright silvery-pink. One of the surest to produce a crop. 25 cents.
- 169—**PHILOMELE** (Calot, 1861.) Guards bright violet-rose changing to cream or amber; fragrant. 35 cents.

- 50—**PRINCESS BEATRICE** (Kelway, 1886.) Guards delicate lilac, crown of brilliant sea shell pink; a glorious flower. 60 cents.
- 40—**QUEEN VICTORIA** (Whiteley, 1808.) Large, full, compact bloom; opens flesh-white, changing to pure white; center petals tipped with carmine spots; a grand white Peony for any purpose; more of this is being planted for cut flowers than any other variety. 25 cents.
- 78—**RUBRA SUPERBA** (Richardson, 1871.) Magnificent rich brilliant crimson; very large, full and double; elegant; late. 50 cents.
- 26—**SOUVENIR DE EXPOSITION UNIVERSELLE** (Calot, 1867.) Very large flat flower of violet-rose with silvery reflex, tipped silver; fragrant. 35 cents.
- 29—**SULFUREA** (Lemon, 1830.) The yellow Peony. Broad, snow-white guard petals, center forming a very full, high cushion; color sulphur-yellow, fading in time to pure white; produces an enormous crop of bloom on grand stems; has more yellow in it than any Peony we grow; a grand, glorious flower—do not fail to plant it; superb in every way. 25 cents.
- 799—**SEEDLING PEONIES.** These are the product from the seed saved from our entire collection of choice named varieties. You do not know what colored flowers you will get, but everyone will be handsome; many of them will be single and resemble huge butterflies of white, red and pink, etc., while others will have double flowers. Be sure and try some of these seedlings. Do not ask us to send any special color, as no one knows the color until they bloom. 35 cents; three for 85 cents; twelve for \$3.00.

Early May Flowering Peonies

These are earlier bloomers than the Chinensis section.

- 802—**OFFICIALIS ROSEA PALLIDA PLENA** (Syn. Mutabilis.) Color soft glossy-pink, changing to pure white. 35 cents.
- 803—**OFFICIALIS ROSEA PLENA**—A lovely shade of delicate pink overlaid with white. 40 cents.
- 805—**OFFICIALIS RUBRA PLENA**—The old-fashioned early deep crimson variety of our grandmothers' gardens. 35 cents.

THE THREE EARLY MAY-FLOWERING PEONIES FOR \$1.00

Japanese Flowered Peonies

For description of varieties see "Peonies for Pleasure" Price, \$1.00, \$1.25 and \$1.50.

Peonies In Mixture

Not mixed Peonies, but Peonies mixed. These are our named kinds that have become mixed by accident. All double flowering.

- 597—**WHITE SHADES MIXED.** 20 cents.
- 598—**RED SHADES MIXED.** 20 cents.
- 599—**PINK SHADES MIXED.** 20 cents.

The three colors in mixture, 50 cents.

Single Flowered Peonies

Extremely showy in white, red and pink at \$1.00, \$1.25 and \$1.50. See "Peonies for Pleasure" for names and description.

Tree Peonies (Peonia Moutan)

We offer fourteen varieties. For description of varieties see "Peonies for Pleasure." \$1.25, \$1.50 and \$2.00.

Remember to Plant Peonies in the Fall and Get Best Results

HARDY PERENNIAL PHLOX

THIS is one of the most easily grown hardy perennials, and the large number of beautiful varieties now offered makes it especially desirable. These noble flowers are not only beautiful as individuals, but the cheerful appearance of our gardens during the summer and autumn months is much indebted to them. They succeed in any position or soil, and can be used to advantage either as single specimens in the mixed border or as large clumps or beds on the lawn. To produce the best results, however, they should have a rich, deep and rather moist soil, and let each clump have a space of from two to three feet in which to develop. They will continue to thrive for several years with little attention, as is attested by the fine clumps about old homesteads. The ease with which they are cultivated, their entire hardiness and the extended time of blooming, combined with the varied and beautiful coloring, make them especially valuable for garden planting. The Perennial Phlox usually commence to bloom in early summer, and are brilliant with color until after several frosts have come. They are admirably adapted for cemetery planting, also for a low hedge or screen to hide old fences and unsightly objects. Do not fail to plant Phlox in the fall, any time from September until the ground is frozen. Price, 10 cents each, three for 25 cents, seven for 50 cents, fifteen for \$1.00. The entire set of thirty-one distinct standard varieties of Hardy Phlox for \$2.00.

STANDARD LIST OF PHLOX



Hardy Perennial Phlox, grand for the garden.

- ALCESTE**—Deep violet, shading almost to blue.
ALHAMBRA—Rich mauve; distinct.
ATHIS—Deep, clear, salmon. Some claim this to be the showiest variety in cultivation.
BERANGER—Ground color white, delicately suffused with rosy-pink, and distinct eye of same color; exquisitely marked.
BEAUTY—Delicate silvery-pink; a most beautiful sort.
BRIDESMAID—Pure white, clear carmine eye; blooms in large round heads; attractive.

- COQUELICOT**—The finest and brightest red of all the Phlox; the color is a bright orange-scarlet.
DUGUESCLIN—Rosy-lilac, distinctly rayed with lighter halo.
ESCLARMONDE—Clear rosy-lilac, deeper eye, exquisitely rayed and shaded.
ECLAIREUR—Clear rosy-magenta, with large lighter halo; large florets and magnificent bedder.
FRAU VON LOSSBURG—Pure snow-white.
HUXLEY—A rich lavender; color fine.
HENRY MURGER—Enormous pure white flowers, with very large, showy, deep carmine eye or center; fine florets and trusses; extra.
INDEPENDENCE—An excellent large flowering early pure white; none better.
KOSSUTH—Rich deep purple. Extra fine.
LA VOGUE—A beautiful rose color with large eye of deeper rose color; very attractive.
LA PERLE DU NORD—Pure white, large, deep, distinct red eye; extra fine.
LE MAHDI—Dark violet-purple.
L'ESPERANCE—Clear rosy-lilac; large white eye distinctly rayed; large florets and an even bloomer.
LOTHAIR—Clear, even carmine, deep crimson eye.
MADAME P. LANGIER—Clear crimson, deeper eye; considered one of the best.
MISS LINGARD—Pearly-white flower, with a very faint pink eye; very remarkable bloomer, producing two to three crops of flowers during the season. Indispensable as a cut flower for florists' use.
MACULATA—Tall-growing, many-branched, pyramidal trusses of bright reddish, almost royal purple; the freest and showiest in permanent border; a grand acquisition to the hardy Phlox.
MRS. DWYER—Pure white with distinct red eye.
NIobe—The deepest, darkest, richest colored of all Phlox—velvety violet-red with crimson hues; grand trusses.
PEACHBLOW—Delicate peachblow-pink, shading to white; large trusses; elegant.
PRIME MINISTER—Deep carmine center, shading to white at the edges of petals; large trusses; free bloomer; exceptionally fine.
PANTHEON—Large, clear, deep, bright pink with faint halo; a charming variety.
RUBUS—A parti-colored variety, rosy-red shading to white.
RICHARD WALLACE—Pure white, with violet-rose eye; large flowers in immense panicles. Too much cannot be said of this variety.
R. P. STRUTHERS—In our estimation the very best Phlox grown today—it has no faults. Color clear cherry-red, suffused with salmon shades; deep red eye; fine large truss. The color is so clear and clean that each individual floret stands out as distinct as a cameo.

NEW VARIETIES OF PHLOX

Some wonderful creations in these newest Phlox. They will certainly be a revelation to you. 20 cents each, any three for 50 cents, six for 85 cents. The entire ten new Phlox \$1.25.

- G. A. STROHLEIN**—Orange-scarlet with bright carmine eye; extra large flowers in enormous trusses; a grand acquisition.
GENERAL VON HEUTSZE—Immense trusses of very large flowers; color of the most brilliant salmon-red, with white center; simply grand.
GRUPPENKONINGEN—Delicate pale rose-mauve with claret-red eye; extra fine.
INSPECTOR EPEL—A startling variety, color deep salmon; florets extra size; will please everybody.
JULES CAMBON—Clear magenta with large distinct white star in center of each floret; superlatively rich and fine.
LE CYGNE—Large, fine florets and trusses of snow-white flowers, the best white.
RHYNSTROM—This new Phlox comes to us from Holland heralded as the best pink in existence, being a clear bright glossy pink.
SIEBOLD—Bright vermilion-red overlaid with orange-scarlet, crimson-red eye; will please everybody.
SELMA (Tower of Eiffel)—Florets of largest size; trusses immense bouquets in themselves; color, deep salmon shaded mauve with claret-red eye; superb.
VON HOCHBERG—Extra large beautifully formed trusses of flowers. The ideal crimson Phlox, the richest of its color.

THE CREAM OF THE NEW ROSES

We here offer what is good in the new Tea and Hybrid Tea Roses. To have what is good you must try these new Roses. They are the best that England, France, Luxembourg, Germany, Ireland, Italy, Holland and America can produce.



New Rose, Jonkheer J. L. Mock.

ALICE GRAHAME—(H. T.) Ivory-white tinted salmon. Large, full and double; a Rose of decided merit. 15 cents; two-year plants, 35 cents.

ALICE LEMON—(H. T.) The bloom is large and perfectly filled with large shell-shaped petals; color blush-white, shading to brilliant salmon-pink; bud long and pointed. Extra fine. 20 cents; two-year plants, 40 cents.

ALEXANDER HILL GRAY—(Tea.) Large full flowers freely produced with perfect high-pointed center. Deep lemon-yellow color, which intensifies as the bloom expands. Strongly tea perfumed. Extra fine. 25 cents; two-year plants, 50c.

ALTHEA—(H. T.) Very beautiful opaque salmon-pink; base of petals shaded with orange and outside flushed rose; very large and full; of vigorous growth. The flowers produced freely. A handsome Rose. 20 cents; two-year plants, 40c.

CELIA—(H. T.) Bright satin carnation-pink, deeper shade in center; full flower, with reflexed petals; exceedingly free blooming. 20 cents; two-year plants, 40 cents.

CHATEAU DES CLOS VOUGEAT—(H. T.) You have all been looking for the black Rose and here it is. The most wonderful color and texture ever seen in a Rose; looks as if cut out of heavy velvet with a color shading from deepest velvety maroon-red to blackish-crimson. We are sure it will become one of the most popular of garden Roses, quite in a class by itself, blooming continuously in crops closely following one another. It is of fine shape, good size and the richest colored of all Roses, being fifty per cent. darker than Prince Camille de Rohan and Jubilee; quite fragrant. With us the foliage of this Rose is absolutely resistant to black spot and mildew; in a class by itself for this reason alone. Keep your eye on this Rose, as it is a wonder; named after a vintage of famous old French wine. 20 cents; two-year plants, 40 cents.

CANADIAN QUEEN—(H. T.) This is another of the great Killarney Roses. The strongest growing of the whole family. It has more petals than any of the Killarneys. Color a bright clear pink with silvery shades. Extra fine. 20 cents; two-year plants, 40 cents.

COUNTESS OF SHAFESBURY—(H. T.) This splendid Rose is the most perfect type of Hybrid Tea. Its large and perfectly formed flowers are produced in endless profusion. In color it is bright silvery-carmine, flushed pale shell-pink at the edges of the petals, giving a delightful picotee effect; the color at the base of the petals deepens with age to light cochineal-carmine. Fine for massing in beds. Awarded the gold medal by the National Rose Society. 25 cents; two-year plants, 50 cents.

CROWN PRINCESS CECELIA—(H. T.) Delicate silvery pink long buds opening to large flowers carried on stiff stems. A free and continuous bloomer. 20 cents; two-year plants, 40c.

ECARTATE—(H. T.) Brilliant scarlet-red; good-sized flowers, produced very freely. Grand bedding variety. We claim that Ecartate will produce more red Roses than any other variety known; it certainly is fine. 25 cents; two-year plants, 50 cents.

EDU. MEYER—(H. T.) A most beautiful combination of coppery-red and yellow; very floriferous. Superb. 15 cents; two-year plants, 35 cents.

EDWARD MAWLEY—(H. T.) By its marvelous outstanding qualities is now regarded by rosarians as the greatest advance and most wonderful Rose yet raised. We have no hesitancy in saying that it is the finest of all dark crimson Roses. A true perpetual flowering Hybrid Tea and the most beautiful variety the Rose world has yet seen. This Rose was raised by McGredy, of Ireland, and named in honor of Edward Mawley, the eminent British rosarian. It received the much coveted gold medal of the National Rose Society of England. 25 cents; two-year plants, 50 cents.

ETHEL MALCOLM—(H. T.) No Rose for many years created the same sensation among Rose growers as this superb variety when it was awarded the gold medal of the National Rose Society. The color is ivory-white passing to a pure white when the flower expands with a delicate peach shading in center of bloom. A truly lovely color. A fine novelty. 20 cents; two-year plants, 40 cents.

EUGENE BOULLET—(H. T.) We were greatly pleased with the promise of this Rose last year, and are now fully decided as to its value as a red bedder. It is easily suited as to soil and position, and produces flowers in great abundance. The blooms are large and full of substantial form and texture. We fully expect this variety to rank at the very top of red garden Roses for massing. Color deep crimson and carmine. A sheet of gorgeous color. 25 cents; two-year plants, 50c.

FARBEN KONIGIN—(H. T.) This is well named the "queen of colors." Our own personal opinion is that there is no finer Rose grown than this beautiful sort. It is large and full. Color bright carmine and rosy-crimson, overlaid with a silvery sheen. Very floriferous. Simply grand. 20 cents; two-year plants, 40 cents.

GARTENDIREKTOR HARTRATH—(H. T.) Very large double flowers with long elegantly pointed buds on stiff stems. Very free. Satiny flesh color; very fine. 20 cents; two-year plants, 40 cents.

GEORGE REIMERS—(H. T.) Fiery red, with shades of garnet and ruby reds commingled; more lustrous than Richmond; large, perfectly formed flowers with massive petals; long bud; continuous bloomer. Will have a great future. 20 cents; two-year plants, 40 cents.

GENERAL SUPERIOR JANSSEN—(H. T.) This new Rose from Holland is a wonder; deep glowing carmine flowers of the largest size; full and fragrant. A perpetual bloomer. 35 cents; two-year plants, 60 cents.

GROSSHERZOGIN FREDERICH—(H. T.) Everybody who gets this Rose will thank us for offering it. Color bright rosy-vermillion, overlaid with a yellowish cast. Awarded the highest prize at Mannheim. 20 cents; two-year plants, 40c.

H. ARMATYGE MOORE—(H. T.) Color a delightful shade of rosy-pink on the outside of the petals; inside of petals a delicate silvery-pink. This is a garden Rose par excellence; free bloomer and vigorous grower. As a bedding Rose, unsurpassed. 20 cents; two-year plants, 40 cents.

HELENE WATTINNE—(H. T.) White with lemon-yellow center. Hardy. Splendid exhibition Rose. One of the very best Hybrid Teas. 20 cents; two-year plants, 40 cents.

HERZOGIN MARIA ANTOINETTE—(H. T.) Very long buds of pure orange or old gold; very large flower of perfect form. Soupert and Notting, of the Grand Duchy of Luxembourg, say: "This is the finest yellow of all yellow Roses." Gold medal, M. Gladbach, certificate of merit of the German Nurserymen's Society; also prizes of honor at Leipzig, Saugenhhausen and Zweibrücken. 25 cents; two-year plants, 50 cents.

HILDA—(H. T.) The finest winter blooming Rose; also grand for the garden. Color a flaming shade of pink difficult to describe. A Rose that has come to stay. 20 cents; two-year plants, 40 cents.

HUGO ROLLER—(Tea.) Large, full and beautifully formed petals nicely reflexed at the edges; center high and pointed; color rich lemon-yellow; petals edged and suffused with crimson; a Rose of great beauty and extraordinary lasting qualities. Will become popular. 20 cents; two-year plants, 40c.

IRISH FIRE FLAME—(H. T.) This is a wonderfully high colored Rose; the red, yellow and bronze colors seen in a fire flame; single and beautiful. 25 cents; two-year plants, 50 cents.

JONKHEER J. L. MOCK—(H. T.) The pink giant from Holland. It is of the general type of La France with big round flowers; bright pink, faced with carmine. Very freely produced on heavy upright canes. This Rose will surprise everybody and will stand at the head of all bedding Roses. 25 cents; two-year plants, 50 cents.

JACQUES VINCENT—(H. T.) Color clear yellowish coral-red, in the way of Lyon Rose but with deeper coppery center. Large, elegant and very free. Fine for bedding and cutting. 20 cents; two-year plants, 40 cents.

KILLARNEY QUEEN—(H. T.) A cerise-pink sport of Killarney that for clearness and brightness of color has not been equalled; exceptionally strong in growth, with foliage that is perfect, being larger than Killarney and more glossy. In size of petals Killarney Queen is larger than its parent, and for high grade bloom it is a very superior variety. Forces fine. 20 cents; two-year plants, 40 cents.

LADY ASHTOWN—(H. T.) Deep rose shading to silvery-pink with touches of yellow at base of the petals. Large, full and fine form, free and constant. Much prized in England. 15 cents; two-year plants, 35 cents.

LADY HILLGONDON—(Tea.) Deep orange-yellow; long pointed bud on long stem. A grand glorious yellow Rose. 20 cents; two-year plants, 40 cents.

LADY QUARTUS EWART—(H. T.) This is a pure paper-white garden Rose; large, full and opening well in all weathers. It is very free-blooming and has extraordinary lasting properties, keeping in good condition for several days when fully expanded, either cut or on the plant. An ideal garden Rose. 20 cents; two-year plants, 40 cents.

LADY PIRRIE—(H. T.) A delightful garden Rose of very distinct coloring. The outside of the petals is reddish-salmon, inside apricot, flushed fawn and copper. In the front rank with the fancy colored Roses; an ideal variety for bedding. Color, freedom of growth and abundance of bloom are bound to put this Rose in the very forefront of garden favorites. Awarded gold medal. 25 cents; two-year plants, 50 cents.

LADY ROBERTS—(Tea.) Rich apricot, base of petal shaded coppery-red, edges of petals shaded orange. A valuable Rose. 20 cents; two-year plants, 40 cents.

LA HOLLANDE—(H. T.) Growth robust and of free branching habit; flowers very large, full and well formed; color almost white, with rosy-yellow center. Undoubtedly the finest of all outdoor Roses. 20 cents; two-year plants, 40c.

LESLIE HOLLAND—(H. T.) Upright, free and vigorous, branching habit of growth, flowering freely and well; flowers large, with shell-shaped petals of great substance, carried on stiff, erect stems; color deep scarlet-crimson, heavily shaded with deep velvety-crimson; very sweetly scented. An excellent Rose. Gold medal, National Rose Society. 25 cents; two-year plants, 50 cents.

LIEUTENANT CHAURE—(H. T.) Bud long and pointed, color velvety-crimson opening to large flowers of crimson-red shaded garnet. Flower of great depth and nicely cupped form. Flowers very freely produced; deliciously fragrant. 25 cents; two-year plants, 50 cents.

MADAME JOSEPH COMBET—(H. T.) Color rich creamy-white, very large and full. Fine form and great substance. A fine Rose. 20 cents; two-year plants, 40 cents.

MADAME JULES BOUCHE—(H. T.) Salmon-white, center shaded rose; large full flowers with long buds, the petals reflex on opening. 20 cents; two-year plants, 40 cents.

MADAME RAVARY—(H. T.) Beautiful orange-yellow; has long slender buds opening into large double flowers with orange-yellow center. Grand bedder. Extra fine. 25 cents; two-year plants, 50 cents.

MADAME VALERE BEAUMEZ—(H. T.) Selected from a large number on trial on account of its fine growth, combined with its unusual and delightful color, light flame with golden center, shaded glowing salmon. Form full and beautifully rounded, of large size on heavy upright stems. A wonderfully striking flower. Looks as if illuminated. A Golden Cochet. 25 cents; two-year plants, 50 cents.

MADISON—(Tea.) This is the improved Bride, a most handsome flower of pure snow-white; is not subject to disease and is not finicky about growing. Grand. 20 cents; two-year plants, 40 cents.

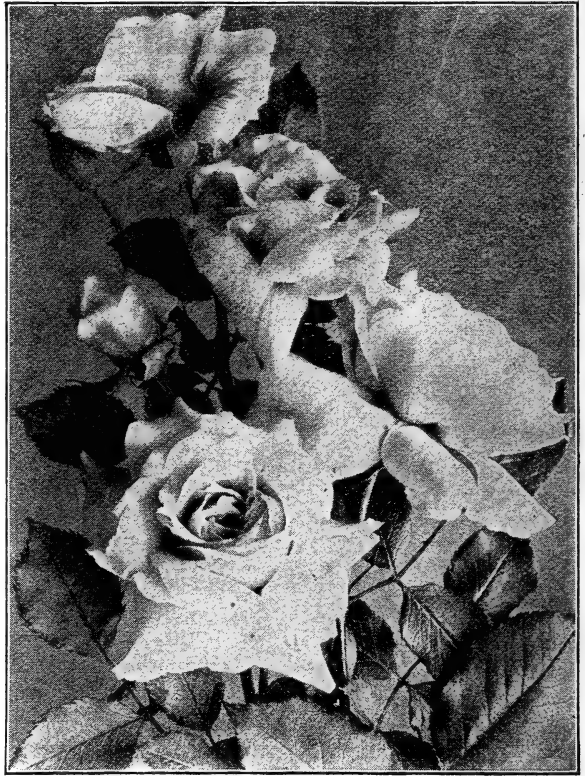
MABEL DREW—(H. T.) A truly magnificent Rose, superb in every respect; the blooms are large, full and symmetrical, the color is deep rich cream passing to intense canary-yellow. It has a deliciously refreshing perfume. Altogether a transcendently beautiful Rose. Awarded by a unanimous vote the gold medal of the National Rose Society. 25 cents; two-year plants, 50 cents.

MARY COUNTESS OF ILCHESTER—(H. T.) Flowers of great size with large, smooth, circular petals. Color warm crimson-carmine. A variety of much merit and distinctness. 20 cents; two-year plants, 40 cents.

MANUEL P. AZEVEDO—(H. T.) The introducers say: "A splendid large double, upright flower of an ideal form. Color fresh cerise-red, with waxlike petals. This first-class novelty has the hardness and splendid form of Ulrich Brunner and is as free-blooming as Etoile de France, one of the first and finest blooming in the Rose garden. A new, rare and invariable color; sweetly perfumed." Mr. Frank Good says: "This Rose has come to stay; it has already made for itself a place that is secure." 25 cents; two-year plants, 50c.

MARIE DELESALLE—(H. T.) As free in growth as Teplitz, flowering continuously; buds long, and elegant, opening into lovely bloom of fine form and large petals; color bright deep cerise. A decidedly free bedding Rose. 20 cents; two-year plants, 40 cents.

MAY KENYON SLANEY—(H. T.) A Rose of wonderful distinctness and charm, possessing a wondrously profuse and continuous flowering habit; the blooms are large and of wonderful finish; the color is a charming blush-pink on rich cream, the pink intensifying as the flower expands; de-



New Rose, Farben Konigin, or Queen of Colors.

lightly tea scented. Valuable. 25 cents; two-year plants, 50 cents.

MELODY—(Tea.) A great Rose; blooms freely and continuously on stiff stems. Color saffron-yellow with primrose edges. 20 cents; two-year plants, 40 cents.

MILADY—(H. T.) A rich crimson Rose. Flower of large size and very double, splendid form and very fragrant. Extra fine. 25 cents; two-year plants, 50 cents.

MRS. AARON WARD—(H. T.) This beautiful Rose was named in honor of Admiral Ward's wife, whose home is on Long Island. The Admiral is the leading amateur rosarian of the entire world, and is so recognized. He says that this Rose is the best bedding Rose he knows of. One of the most delightful Roses of recent years in a color that catches the eye at once—a deep golden-orange color shading out to lemon or creamy-yellow at the edge of the petals. Some describe the Rose as an Indian-yellow. The buds are cupped and very deep, showing the glowing heart to the best advantage. You absolutely get a yellow Rose in this variety. Flowers very large, very full, of exquisitely refined form. One of the most beautiful Roses in existence. 25 cents; two-year plants, 50 cents.

MRS. ALFRED TATE—(H. T.) Coppery-red, shaded fawn; large, full, free and perpetual, large shell-petals. A glorious Rose. 20 cents; two-year plants, 40 cents.

MRS. ARTHUR E. E. COXHEAD—(H. T.) Flowers full, with long pointed bud. Color claret-red shading to vermilion at edges of petals with brilliant shining luster. Deliciously fragrant. 20 cents; two-year plants, 40 cents.

MRS. AMY HAMMOND—(H. T.) The great Irish Rose raised by Samuel McGredy of Ireland. He describes it as "everybody's" Rose, on account of its freedom of growth and abundance of bloom. The color is a blending of ivory and amber shadings. The clear amber color is most pronounced and develops to bright apricot towards the base of the petals. Many blooms develop all over this delightful apricot shading to such an extent that it is charming beyond description. Deliciously fragrant. One of the most distinct Roses ever sent out. Awarded gold medal National Rose Society of England. 25 cents; two-year plants, 50 cents.

MRS. ARTHUR MUNT—(H. T.) Deep cream suffused peach, shading to creamy-white; large, full and perfectly formed. Very free and perpetual. 20 cents; two-year plants, 40c.

MRS. CHARLES CUSTIS HARRISON—(H. T.) Is a Rose of great beauty and distinctness. The blooms are large, full and of globular form. Color deep crimson-pink on front of petals, crayoned deep crimson-carmine on the reverse side. A warm color that lights up when held in varied positions of light. Highly perfumed. 25 cents; two-year plants, 50c.

MRS. CHARLES RUSSELL—(H. T.) This wonderful new Rose has taken the country by storm, no other forcing Rose except American Beauty can compete with it in points. Color a grand rosy-red or deep pink, of the largest size. 25 cents; two-year plants, 50 cents.

MRS. CORNWALLIS WEST—(H. T.) A truly magnificent and absolutely distinct Rose of huge size and great substance, with exquisite imbricated globular form. The purity of the transparent delicate pink—which is between a shell and a rose-pink—on the purest white, gives it an attraction all its own, that it is simply impossible to convey. Awarded gold medal, N. R. S. 25 cents; two-year plants, 50 cents.

MRS. E. J. HOLLAND—(H. T.) Deep salmon-rose shading lighter towards the edge of the petals. A Rose that is attracting much attention. 20 cents; two-year plants, 40 cents.

MRS. FOLEY HOBBS—(Tea.) Vigorous form and erect growth. Flowers very large, full and exquisitely formed. Color delicate ivory-white with a delicate tracing of pink on the edge of the petals. One of the very finest Tea Roses of recent introduction. A giant among Tea Roses. 20 cents; two-year plants, 40 cents.

MRS. GEORGE PRESTON—(H. T.) Large, full and globular, flowering in profusion. Delicate warm silvery-pink; petals very large. A Rose of great charm. 20 cents; two-year plants, 40 cents.

MRS. GEORGE SHAWYER—(Tea.) This Rose promises good things in its color and class. The color is a lovely bright shade of pink. A valuable Rose which has proven fine for forcing. It has all the ear-marks of a fine bedder. From the raisers of Lady Hillingdon. 25 cents; two-year plants, 50 cents.

MRS. HERBERT STEVENS—(Tea.) White with a distinct fawn and peach shading towards the center. Bloom long and pointed of good form. Very free blooming and deliciously fragrant. A Rose that has come to the front to stay. 20 cents; two-year plants, 40 cents.

MRS. HUBERT TAYLOR—(Tea.) Shell-pink, edges of petals ivory-white; large, full and very free. Fine for the garden. 20 cents; two-year plants, 40 cents.

MRS. JOSEPH H. WELCH—(H. T.) The color of this wonderful Rose is a rich brilliant rose-pink, so distinct and rich a color has not yet been attained in any Rose. It is undoubtedly the largest Rose in cultivation. The blooms are a model, both as regards size, shape, form and color. The grandest and noblest Rose in the whole section to which it belongs. Awarded gold medal of the National Rose Society. 25 cents; two-year plants, 50 cents.

MRS. MAYNARD SINTON—(H. T.) Porcelain-white, large, full, well-formed flowers, free and constant bloomer. Extra fine. 20 cents; two-year plants, 40 cents.

MISS ALICE DE ROTHSCHILD—(Tea.) The color is a rich deep citron-yellow, which intensifies as the bloom expands. The flowers are very large, full and of perfect form, with high pointed center, petals beautifully reflexed. Deliciously fragrant. 20 cents; two-year plants, 40 cents.

MISS CYNTHIA FORDE—(H. T.) A grand garden Rose that won with ease the gold medal of the National Rose Society. The size is large, the form is perfection, while the color is charming, being a deep brilliant rose-pink shading in the back of the petals to light silvery-pink. Grand. 20 cents; two-year plants, 40 cents.

NATALIE BOTTNER—(H. T.) Color delicate cream-yellow; a flower of wonderful finish in the way of "Kaiserin;" very vigorous, but nevertheless most floriferous. It combines the prominent qualities of the two celebrated Roses, "Druschki" and "Kaiserin." This novelty is much superior to them. This is an absolutely first-class Rose. 25 cents; two-year plants, 50 cents.

POLLAERT ROSE—(H. T.) This is the much heralded improved La France. The claims made for it are that it is a stronger grower, and that the fragrance is more pronounced. 20 cents; two-year plants, 40 cents.

PRINCE ENGLEBERT CHARLES d'ARENBERG—(H. T.) Brilliant fiery scarlet with buds of unusual good substance. A fine erect grower, with ample foliage. Considered by many the best French Rose sent out in years. 20 cents; two-year plants, 40 cents.

PRESIDENT TAFT—(H. T.) This Rose was originally named "The Taft Rose." There have been two Roses sent out under this name, a red variety from Europe without merit, and the one we here describe. This Rose was raised in Cincinnati, the home of President Taft, and let us say right here while some of you may not admire the President himself, you will one and all admire the Rose given his name. It is without question the most remarkable of all pink Roses. It has a shining, intense deep pink color possessed by no other Rose. It is a fine grower, free bloomer, good size and form, fragrant, and in a class by itself as to color. A rosarian, who is probably familiar with more Roses than any man in America, says: "Talk all you want to about the Rose President Taft, and then you will not say enough." You might just as well buy this Rose now, for we are going to keep hammering at you until you do. 20 cents; two-year plants, 40 cents.

QUEEN OF SPAIN—(H. T.) Flowers very large and very full; large, smooth petals, of good substance; perfectly formed flowers, with high pointed center. Color delicate flesh with deeper center. An ideal Rose. 20 cents; two-year plants, 40 cents.

ROBERT HELLER—(Tea.) A seedling from Perle des Jardins. The most brilliant and beautifully formed yellow Rose ever introduced; vigorous and thrifty. It is never out of bloom all summer. 20 cents; two-year plants, 40 cents.

ROBIN HOOD—(H. T.) This new Rose has a glorious rosy-scarlet color that is at once soft, bright and lasting; large and full. A grand red bedding Rose. 20 cents; two-year plants, 40 cents.

RECUERDO DE ANTONIO PELUFFO—(Tea.) Exceedingly large, very double and of irreproachable form. Color light yellow with edges of petals edged pink. A classical Rose. Combining all the good qualities of the Rose. 20 cents; two-year plants, 40 cents.

RADIANCE—(H. T.) Another fine American Rose that is rapidly attaining popularity, especially on account of its value as a summer bedder. Color a lovely rosy-pink, both deep and penetrating. Will arrest immediate attention. Don't forget this variety if you want vases of fine cut Roses. 20 cents; two-year plants, 40 cents.

SUNBURST—(H. T.) This is the new yellow Rose sent out from France, and has created a sensation wherever shown. Center deep orange-yellow, edges of petals lighter yellow. Evidently has come to stay. 25 cents; two-year plants, 50c.

SOUVENIR DE GUSTAVE PRAT—(H. T.) Color clear sulphur-yellow, very charming in tint; bud long and oval, opening into a very large flower that is fairly full. A grand garden Rose. 20 cents; two-year plants, 40 cents.

SENATEUR MASCURAND—(H. T.) Large, full and globular, expanding into a flower of orange-yellow, toned to the edges of petals to a light sulphur-yellow. There is no better yellow Rose. 25 cents; two-year plants, 50 cents.

VANITY—(Tea.) An Austrian novelty, a most refined and exquisitely formed flower; color rich canary-yellow; buds exceptionally long and elegant. As this has bloomed with us it has decided merit. 20 cents; two-year plants, 40 cents.

VISCOUNT CARLOW—(H. T.) During the flowering season the plant is virtually garlanded with chaste, highly tea-scented blooms, and will therefore prove to be an ideal bedding variety. The color is warm carmine-pink, stained on deep cream; the stiff shell-shaped petals, whilst developing, being distinctly edged carmine. 25 cents; two-year plants, 50c.

WHITE TESTOUT—(H. T.) This is identical with Madame Caroline Testout, except that the color is pure white. A grand novelty. 25 cents; two-year plants, 50 cents.

WILLIAM SHEAN—(H. T.) If there is a larger Hybrid Tea Rose than this we have not seen it. The color is a pure self-pink, overlaid with a satiny sheen of silvery-pink, delicately veined with ochre. Very free bloomer and highly perfumed. 20 cents; two-year plants, 40 cents.

Try Our Roses for Fall Planting

The habit of planting Roses in the fall time is growing rapidly, and our customers are having marked success. Give fall planting a trial. They get a better start in the spring when planted in the fall, and thus better stand the first dry hot summer.

From time immemorial almost have we been urging upon all our customers to plant Roses in the fall time, and the reason why is just as simple as rolling off a log. Say you put off planting until springtime. You may neglect ordering at the right time, and after you get the Roses the ground may be unfit on account of the weather to plant. Your Rose plants out of the ground are suffering, then after you plant them a dry spell comes on and your Roses have a struggle to get started. While if you plant in the fall the earth is thoroughly settled around the roots by the rains and snows of winter and your Roses are in their place ready to take advantage of every particle of root-making or top-growing weather that comes along, and maybe they won't take advantage of all of it; they start into vigorous root action and wood growth, and you soon have plants in full bloom. This should be very plain to you. **TRY FALL PLANTING OF ROSES.**

THE "EXCELSIOR" LIST OF NEW AND CHOICE EVER-BLOOMING ROSES FOR OUTDOOR PLANTING OR HOUSE CULTURE

Price, 10c each, 3 for 25c; any 7 of your own selection for 50c; any 15 for \$1.00. If you leave the selection of the varieties to us, we will send 9 for 50c, or 20 for \$1.00. Large two-year-old Roses from this list, 25c each, or 5 for \$1.00.

For general planting, more especially in open ground, this class excels all others. One-year-old plants, such as we send by mail, bloom the first and each succeeding year from early spring until severe frosts. Two-year-old plants, of course, yield a greater profusion of flowers, owing to their size. The flowers are noted for their exquisite coloring and delightful fragrance; hardy everywhere in open ground with protection of litter, leaves, evergreen boughs or similar materials. Plant liberally of one-year-old Roses; the harvest of bloom they give the first year compensates for the trifling outlay. Anyone can succeed with them.

"EXCELSIOR" LIST OF ROSES OF SPECIAL MERIT. In ordering say from "Excelsior" List

AGRIPPINA—Bright red, very free bloomer.
ALLIANCE FRANCO-RUSSE—Golden-yellow flushed crimson.

ANDRE GAMON—Pure rosy-carmine; large, full, globular.

ANTONINE VERDIER—Bright glowing pink; very free bloomer.

ARCHDUKE CHARLES—Deep carmine, reverse silvery-pink.

AURORA—Bright pink; very double and sweet; fine garden Rose.

BARDOU JOB—Deepest, richest velvety crimson of all Roses.

BEAUTY OF STAPLEFORD—Bright, rich rosy-crimson.

BETTY—Coppery-rose; flushed golden-yellow; glorious form.

BLUMENSCHMIDT—Rich lemon-yellow; often tinged pink.

BOUGERE—Bronzed pink, tinged with lilac; large and full.

BURBANK—Bright pink; a grand bedder; always in bloom.

CARDINAL—Rich cardinal-red; full and very free.

CAROLINE KUSTER—Light lemon-yellow flowers; superb.

CAROLINE MARNIESSE—Blush-white; very free; very hardy.

CATHERINE MERMET—Color a clear rosy-pink; large and fine.

CHAMPION OF THE WORLD—Rich, deep rosy-pink; extra fine.

CHERRY RIPE—A deep, rich cherry-red; A No. 1.

CHRISTINE DE NOUE—A bright glowing crimson.

CLARA WATSON—Salmon-pink; a grand variety.

COLONEL R. S. WILLIAMSON—Satiny-white with deep blush center.

COMTESSE DE BARBANTINE—A most beautiful silvery-pink.

COMTESSE RIZA DU PARC—Coppery-rose; large and free; fine.

COQUETTE DE LYON (Yellow Hermosa)—Pure light yellow.

CORNELIA COOK—The old favorite white Rose; none better.

COUNTESS OF DERBY—Center salmon, shading to delicate pink.

COUNTESS OF GOSFORD—Clear salmon-pink and saffron-yellow.

DEAN HOLE—Light carmine, shaded salmon; extra fine.

DEVONIENSIS—Magnolia fragrance; a delicate creamy-white.

DR. GRILL—Coppery Nasturtium-yellow, tinged with red.

DR. J. CAMPBELL HALL—Silvery coral-rose, suffused white.

DOROTHY PAGE ROBERTS—Coppery-pink, suffused apricot-yellow.

DUCHESS DE BRABANT—Bright salmon-pink; an old favorite.

DUCHESS OF ALBANY (Red La France)—A superb Rose.

DUCHESS OF WELLINGTON—Intense saffron-yellow; stained red.

EMPRESS EUGENIE—Deep, rich pink; very double; hardy.

FLORENCE PEMBERTON—Creamy-white, flushed and shaded peach.

FRANCIS DUBREUIL—Deep, vivid crimson; a delightful Rose.

FRIEDRICH VON MARSCHALL—A grand, large, bright carmine-rose.

FRIEDRICHSRUHE—Deep blood-red; fine odor.

F. R. PATZER—Creamy-buff; reverse delicate pink; extra fine.

GENERAL McARTHUR—A superb, deep, rich red Rose; new.



Catherine Guillot.

GENERAL ROBT. E. LEE—Orange-yellow; shaded white; free.

GENERAL TARTAS—Color rich, deep rose; very fine.

G L A D Y S H A R K N E S S—Deep salmon-pink; fragrant.

GROSSHERZOGIN ALEX-ANDRA—Clear canary-yellow; fine.

GOLDEN GATE—White; most beautifully tinged pink.

GRUSS AN TEPLITZ—Brightest red of all Roses; extra.

HARRY KIRK—Deep sulphur-yellow; long pointed buds.

HECTOR MACKENZIE—Dark pink, changing to silvery-carmine.

HERMOSA—Beautiful bright pink flowers; an old favorite.

HOMER—Soft rose, with salmon shadings.

IVORY—Pure snow-white; very pretty bud.

JAMES COEY—Deep golden-yellow, edged white.

JOHANNES WESSELHOFT—A grand yellow Rose.

KILLARNEY—Clear rich deep shell-pink.

LA DETROIT—Shell-pink, shading to rose; elegant.

LADY ALICE STANLEY—Bright rosy-flesh, reverse deep coral-red.

LADY BATTERSEA—Long pointed buds of richest red; elegant.

LADY MARY CORY—Deep yellow; distinct and fine.

LADY URSULA—Flesh-pink; large, full and perfectly formed.

LA TOSCA—Soft pink, tinted rosy-white; extra.

LAURENT CARLE—Deep rosy-carmine; extra fine.

LE PACTOLE—Pale sulphur-yellow; free.

LOUIS PHILLIPE—Dark crimson-maroon; good bedder.

LUCULLUS—Beautiful crimson-scarlet; free bloomer.

MADAME ABEL CHATENAY—Rosy-pink with lighter shadings.

MADAME CAMILLE—A remarkable shade of salmon; large.

MADAME CAROLINE TESTOUT—A grand, bright pink; extra large.

MADAME CONSTANT SUPERT—Deep golden-yellow, tinted peach.

MADAME DE VATRY (Creole Beauty)—A fine red.

MADAME DE WATTEVILLE—Rosy-blush, bordered crimson.

MADAME EDMOND SABLAYROLLES—Yellow, deep orange center.

MADAME HOSTE—Pale lemon-yellow, deeper center.

MADAME JENNY GILLEMOT—Saffron-yellow, opening pale yellow.

MADAME JOSEPH SCHWARTZ—White, delicately tinged pink.

MADAME JULES GROLEZ—Rose and satiny-pink; extra fine.

MADAME LOMBARD—Rosy-red, with silvery reflex; extra fine.

MADAME LEON PAIN—Silvery-salmon; center yellowish-orange.

MADAME LEON SIMON—Dark rose, yellow center.

MADAME MINA BARBANSON—Large, full, silvery-pink.

MADAME MARGOTTIN—Citron-yellow with red center; fine.

MADAME MAURICE DE LUZE—Deep rose-pink; cochineal center.

MADAME MELANIE SOUPERT—Saffron-yellow suffused carmine.
MADAME PERNET DUCHER—Called the yellow Pres. Carnot.
MADAME PHILLIPE RIVOIRE—Apricot-yellow touched carmine.
MADAME P. EULER—Silvery-pink with vermilion shades.
MADAME SCHWALLER—Deep pink, deliciously fragrant; hardy.
MADAME SEGOND WEBER—A beautiful grand deep pink.
MADAME WELCHE—Amber-yellow, flushed with crimson.
MADEMOISELLE CECILE BERTHOD—Deep rich golden-yellow.
MADEMOISELLE FRANCESCA KRUGER—Deep coppery-yellow.
MADEMOISELLE HELENE GAMBIER—Coppery-yellow; deep center.
MADEMOISELLE SIMONE BEAUMEZ—White; yellow center.
MAGNAFRANO—Magnificent buds of crimson-scarlet.
MARIE DUCHER—Rich salmon, with fawn center.
MARIE GUILLOT—The old standby for a pure white Rose.
MARIE LOUISE—Beautiful rose color; grand bedder.
MARIE VAN HOUTTE—Straw-yellow, flushed with crimson.
MARQUIS DE QUERHOUT—Coppery-yellow; extra fine.
METEOR—A grand, rich, dark crimson; superfine.
MISS KATE MOULTON—Soft shell-pink; extra.
MOLLY SHARMAN CRAWFORD—Pure dazzling white.
MRS. A. R. WADDELL—Clear deep salmon.
MRS. BENJAMIN R. CANT—Deep, dark carmine; extra.
MRS. DAVID JARDINE—Bright rosy-pink; shaded salmon.
MRS. DEGRAU—Bright coral-pink; fine bedder.
MRS. G. W. KERSHAW—Glowing, deep rose-pink; perfect.
MRS. ROBERT GARRETT—A grand deep pink with long bud.
MURIEL GRAHAM—Pale cream, faintly blushed rose.
MY MARYLAND—Clear glowing pink; extra.
NITA WELDON—Ivory-white, edges of petals blush.
OLIVIA—Bright red; a grand garden Rose.
PAULA—Sulphur-yellow with ochre center.
PEERLESS—Pure white, with pale flesh center.
PERLE DES JARDINS—Clear golden-yellow; very rich.
PERLE VON GODESBURG—Pure white with yellow center.
PHARISAER—Rosy-white, shaded salmon; extra fine.

PIERRE GUILLOT—Enormous, rich crimson blooms; none finer.
PRINCE DE BULGARIE—Coppery-yellow, golden center; extra.
PRINCESS BONNIE—A grand, rich, bright red Rose.
PRINCESS SAGAN—The color is a rich velvety-crimson; free.
QUEEN BEATRICE—The finest of bright pink Roses.
REINE MARGUERITE D'ITALIE—Bright carmine and vermilion.
RHEA REID—Richest deep crimson; fine for garden.
RHEINLAND'S EYRE—Clear, even satin rose; large and fine.
RAINBOW—Blotched and streaked pink and crimson.
RICHMOND—Pure bright scarlet-red.
ROSEMARY—A beautiful Rose of shining silvery-pink.
ROSE GUBERT—Canary-yellow deepening at the center.
ROSOMANE GRAVEREAUX—Deep silvery-pink and rosy-flesh.
SNOWFLAKE—Snow-white, most profuse bloomer of all Roses.
SOMBREUIL—Pure white, tinged delicate pink; hardy.
SOUV. DE CATHERINE GUILLOT—Coppery-yellow, shaded orange.
SOUV. DE LA MALMAISON—Creamy-flesh, rose center.
SOUV. DE PIERRE NOTTING—Orange-yellow, bordered carmine.
SOUV. d'UN AMI—Bright pink; large and fine.
SOUV. OF WOOTTON—Deep, rich red; large.
SUNRISE—A combination of yellow and red; very pretty.
SUNSET—Has the tints of a lovely golden sunset.
THE QUEEN—Beautiful, large, pure white flowers; extra.
TRIUMPH DE PERNET PERE—Magenta-red and rich crimson.
UNCLE JOHN—A grand, bright pink Rose, of largest size.
VISCOUNTESS FOLKSTONE—Pure white, faintly tinted fawn.
WELLESLEY—Beautiful self pink, very bright in color.
WHITE BOUGERE—Pure immaculate white; very free.
WHITE LA FRANCE—Pure white with shadings of fawn.
WHITE KILLARNEY—Pure snow-white; extra.
WHITE MALMAISON—Pure white, shaded lemon-yellow.
WILLIAM NOTTING—Deep coral-pink; extra.
WINNIE DAVIS—Apricot-pink with Aurora Borealis tints.
YELLOW MAMAN COCHET—Golden-yellow flushed crimson.
YVONNE VACHEROT—Porcelain-white, retouched with red.

FAMOUS ROSE COLLECTION FOR FALL PLANTING

WE GUARANTEE THAT
NO BETTER TWELVE ROSES FOR THE GARDEN
 WERE EVER OFFERED THAN THIS "FAMOUS" COLLECTION
—TRY THEM—

Price, 10 cents each; any six for 50 cents; the entire twelve for 90 cents; two-year-old plants, 25 cents each; any six for \$1.25; the entire twelve for \$2.25.

ANTOINE RIVOIRE—This is the famous Mrs. Taft Rose of the fashionable Eastern markets. This Rose is in a class by itself; no Rose ever produced has such substance of petal; color creamy-white with rainbow tints; a beauty and a wonder.
BESSIE BROWN—A Rose of transcendent beauty; of the largest size; color pearl-white with a delicate tinge of fawn.
ETOILE DE FRANCE—For the best red garden Rose it lies between this one, Rhea Reid and Helen Gould. Some say one and some say the other.
ETOILE DE LYON—Still the best large golden-yellow Rose.
HELEN GOOD (The Beauty Cochet)—What the introducers say: This is a true Cochet Rose and after two years' trial in the garden we pronounce it as good if not better than any Rose for the garden ever sent out. We bought the entire stock of this Rose, paying \$1,000 for two plants, this being by far the highest recorded price ever paid for any Rose. The color is a delicate yellow, suffused with pink, each petal edged deeper, very chaste and beautiful. The color, with its immense size and exquisite form, makes it without question the greatest Tea Rose ever introduced, and we are proud to have brought it out.
HELEN GOULD—A rich red Rose that is a great bloomer; the shade of red has been described best as a watermelon-red; elegant.
KAISERIN AUGUSTA VICTORIA—A grand white garden Rose that has stood the test of time. Full and double; fine buds and flowers.

LA FRANCE—This is claimed by many to be the queen of all the Roses; bright silvery-pink.
MAMAN COCHET (The Queen of All Garden Roses)—Such beauty and exquisite form as is possessed by this variety is well-nigh marvelous, and cannot be seen in any other Rose we know of. The buds are beautiful, large, full and firm and elegantly pointed; as they expand they show great depth and richness, sometimes measuring two and a half inches from base to tip. Flowers superb when open, extra large, perfectly double and of splendid substance. Small pot plants will in the open ground quickly make large, strong bushes, and produce, on long, stiff stems, great numbers of perfect flowers that are enchanting in fragrance and delicate brightness. The color is rich, clear pink, changing to a silvery-rose. As we see it, one good Rose like any of the Cochet Roses is worth a whole collection of poor ones at any price.
SOUVENIR DE PRES. CARNOT—A grand Rose of the largest size; the color a delicate fawn or salmon; extra fine.
WHITE MAMAN COCHET (No Finer Rose Than This)—This Rose attracted our attention from the very first time we ever saw it in flower. It is of the largest size, and, as you will notice, the flower is built up, or rounded, and very double. The color is a pure snow-white. Sometimes outdoors it is tinged pink, which only adds to its great beauty. No Rose surpasses it in vigorous growth and in the immense size of its buds and flowers—indeed, nothing in the Tea family approaches it in size. Deliciously fragrant.
WM. R. SMITH—This Rose has several names, such as Charles Dingee, Jeannette Heller, Maiden's Blush, etc. Color delicate blush. It has no superior as a garden Rose.

CLIMBING TEA AND NOISETTE ROSES

This class includes some of our most beautiful and valuable Roses. They are unusually free and continuous bloomers, producing flowers of rare and striking beauty. As they are all climbers, they should be placed near porches, pillars or trellises, where they have support. They are hardy in the South. Price, 10 cents each; three for 25 cents; any seven for 50 cents. Price of large two-year-old plants of Climbing Roses named below, 35 cents each; three for \$1.00.

CELINE FORESTIER—Deep sulphur-yellow; fine.
CLIMBING BELLE SIEBERTH—Rich shell-pink; incessant bloomer.
CLIMBING BRIDESMAID—Clear rose-pink; crimson shadings.
CLIMBING CLOTHILDE SOUPERT—Ivory-white; center deep silvery-rose.
CLIMBING DEVONIENSIS—The Climbing Magnolia Rose; bluish-white.
CLIMBING KAISERIN A. VICTORIA—Ivory-white; elegant.
CLIMBING KILLARNEY—Long pointed buds of clear Killarney-pink.
CLIMBING MME. C. TESTOUT—Clear shell-pink, edged silvery-rose.
CLIMBING MME. WELCH—Amber-yellow flushed with crimson. Extra fine.
CLIMBING MME. C. BRUNNER—Rosy-pink on a creamy-white ground.
CLIMBING METEOR—The acme of all red climbing Roses.
CLIMBING PAPA GONTIER—Bright coral-red; very fine.
CLIMBING PAUL NEYRON (Madame Wagram)—Clear satiny-rose.
CLIMBING PERLE DES JARDINS—Deep golden-yellow.
CLIMBING SOUV. DE LA MALMAISON—Creamy-flesh; peach-pink center.
CLIMBING SOUV. OF WOOTTON—Deep velvety-crimson in clusters.
CLOTH OF GOLD (Chromatella)—A clear golden-yellow.
DUCHESS DE AUERSTADT—Color vivid nanken-yellow. A fine climbing Tea Rose, and one that is very popular on the Pacific Coast.
ELIE BEAUVILLAIN—Salmon-fawn color; very elegant.
FORTUNE'S DOUBLE YELLOW—Known in California as the San Rafael Rose.
FRANCES E. WILLARD—Pure snow-white; none better.
GAINSBOROUGH—White, delicately tinted flesh; extra.
GLOIRE DE DIJON—The old standby pink.
JAMES SPRUNT—Deep velvety-crimson and very double.
LAMARQUE—Pure white; very double; an old standby.
MAMIE—Color a delicate fawn with heart of pink.
MARECHAL NIEL—Magnificent golden-yellow.
PILLAR OF GOLD (E. Veyrat Hermanos)—Apricot and golden-yellow.

REINE MARIE HENRIETTE—Pure cherry-red; sweet scented.
REVE D'OR (Golden Chain or Climbing Safrano)—Orange-yellow.
RUTH VESTAL (Climbing Bride)—Pure white; extra.
SOLFATARE—Clear sulphur-yellow; large, full and double.
WHITE BANKSIA or LADY BANKS—Pure white; violet fragrance.
W. A. RICHARDSON—Orange-yellow; center coppery-yellow.
YELLOW BANKSIA or LADY BANKS—Deep yellow; violet fragrance.
ZELIA PRADEL (Estella Pradel)—Lovely pure white flowers.

AMERICAN BEAUTY

(H. P.) We can supply this fine hardy hybrid perpetual red Rose at 25 cents each; two-year plants, 50c.

NEW VARIETIES OF TENDER CLIMBING ROSES

All of these new Climbing Roses in two-year plants, 50c each.
ALINE SCHNEIDER—Canary-yellow with deep golden-yellow center. Its clear golden color gives it a place that is quite its own. Bloom large and double; sweetly scented. 15 cents.
CLIMBING GRUSS AN TEPLITZ—An exact counterpart of the bush form of that superb Rose Gruss an Teplitz except that it is a vigorous climber. A perfect sheet of dazzling crimson when in bloom. 15 cents.
CLIMBING HELEN GOULD—Richest watermelon-red. Very free. Grand. 15 cents.
CLIMBING LIBERTY—Color brilliant velvety-crimson; flowers of good size and beautifully formed; a superb variety for any purpose, the blooms lasting well when cut; very free flowering. When you see this dazzling rich Rose you will never forget it. 25 cents.
CLIMBING WHITE MAMAN COCHET—This is a climbing form of White Cochet. Same flowers, same color; nothing beats it. 15 cents.
STRIPED REINE MARIE HENRIETTE—A sport from Reine Marie Henriette with the same beautiful rosy-carmine flowers that are exquisitely striped vivid carmine; distinct and fine. 15 cents.

POLYANTHA ROSES

These are entirely hardy and bloom from early summer till frost; indeed they hide the plant in many instances, being such free bloomers. 10 cents each, three for 25 cents; two-year plants, 35 cents each.

ANNA MULLER—The pink Baby Rambler; always in bloom.
ATROPURPUREA—This variety completely hides the plant with its deep purplish-red flowers in immense clusters.
BABY RAMBLER—Completely hides itself all summer; bright red.
BABY TAUSENDSCHOEN—A dwarf form of the famous Thousand Beauties. Extra.
CATHERINE ZEIMET—The White Baby Rambler. Extra.
CLOTHILDE SOUPERT—French white with large pink center.
ERNA TESCHENDORFF—This is the much-heralded variety from Holland that is to supersede that charming variety Jessie. The color is a brilliant dark carmine-red, fine for pots or garden.

JESSIE—Bright cherry-crimson. Superb.
MARIE PAVIE—Elegant white flushed with pink.
MME. CECILE BRUNNER—Rosy-pink, flushed with white.
MOSELLA—A grand yellow Rose. Lighter edges.
MRS. WM. H. CUTBUSH—Flowers the delicate pink of Dorothy Perkins.
ORLEANS—The showiest and prettiest of all the Baby Ramblers. Clear pink; large white center.
PACQUERETTE—Pure white, perfectly double.
PERLE D'OR—Coppery-orange changing to fawn.
SCHNEEWITCHEN—Profuse blooming; pure white in clusters.

SOME OF THE NEWER AND MORE SCARCE HYBRID ROSES

Price, 15 cents each, four for 50 cents, nine for \$1.00. Two-year size, 40 cents each, three for \$1.00. These Roses are hardy and are suitable for planting in cold climates. All are extremely fragrant.

AVOCA—Deep crimson-scarlet; buds long and pointed.
BARBAROSSA (The Red Frau Karl Druschki)—Pure carmine-red.
BLACK PRINCE—A rich, brilliant, dark crimson.
BARON DE BONSTETTEN—Rich, dark velvety-maroon.
CAPTAIN CHRISTY—Lovely peach-pink deepening to rosy-crimson.
CAPTAIN HAYWARD—Deep glowing crimson; none better.
CHARLES LEFEBVRE—Velvety-crimson and darkest maroon.
CONRAD F. MEYER—Clear flesh-pink; four inches across.
DUC DE ROHAN—Clear, dazzling bright red; extra.
DUKE OF EDINBURGH—Rich, brilliant vermilion; large and attractive.
DINSMORE—Color dazzling scarlet; very free bloomer.
EUGENE FURST—Deep red shaded crimson; extra fine.
EARL OF DUFFERIN—Grand, deep, rich red Rose; fragrant.
FRAU KARL DRUSCHKI—The best white Rose of all Roses.
HIS MAJESTY (The King of Roses)—Dark, deep crimson; superb.

HUGH DICKSON—Intense velvety-crimson shaded scarlet.
J. B. CLARK—An intense deep scarlet; shaded black.
JOHN HOPPER—Color a brilliant deep rose; shaded scarlet.
JUBILEE—Deep crimson-red and velvety-maroon.
MME. CHAS. WOOD—Bright, rich cherry-red; free bloomer.
MME. MASSON—Color bright, rich crimson; a gem.
MARCHIONESS OF LORNE—Cup-shaped flowers; rich fulgent Rose.
MARGARET DICKSON—Pure waxy-white of the largest size.
MARSHALL P. WILDER—Scarlet-crimson, richly shaded maroon.
MRS. JOHN LAING—Of immense size; bright shell-pink.
MRS. R. G. SHARMAN CRAWFORD—Deep rosy-pink; superb.
MRS. STEWART CLARK—Bright cerise-pink, very large, splendid form; deliciously fragrant.
NEW CENTURY (Rugosa)—Bright, vivid pink in clusters.
NOVA ZEMBLA—The pure white Conrad F. Meyer.
PAUL NEYRON—Lovely deep rose, or bright pink; very large.
PRINCE CAMILLE DE ROHAN—Deep, rich velvety-crimson.
ULRICH BRUNNER—Glowing crimson flamed with scarlet.



Climbing Roses are a joy forever.

HARDY CLIMBING ROSES, INCLUDING THE RAMBLERS

Price, 10 cents; any three for 25 cents; any seven for 50 cents. Two-year-old plants, 30 cents, four for \$1.00.

ALBERIC BARBIER—Light yellow with deep golden-yellow center.
AMERICAN PILLAR—Bright pink with prominent yellow anthers.
AMOENA—The pink flowering Cherokee Rose.
BALTIMORE BELLE—Blush-white, in large clusters.
CLIMBING BABY RAMBLER—Bright red; blooms all the time.
CLIMBING FRAU KARL DRUSCHKI—Paper-white. A No. 1.
CRIMSON RAMBLER—The flowers are in huge red panicles.
CHEROKEE SINGLE—Large, pure white single flowers.
CHEROKEE DOUBLE—Large, pure white double flowers.
DR. W. VAN FLEET—Delicate shade of flesh-pink.
PINK DOROTHY PERKINS—A beautiful shell-pink, full and double.
EMPRESS OF CHINA—Bright pink in large clusters.

FLOWER OF FAIRFIELD—The ever-blooming Crimson Rambler
LADY GAY—Very double, deep pink in large clusters.
MARY WASHINGTON—Pure white; perfectly double; fine.
PHILADELPHIA RAMBLER—Clusters of darkest crimson.
PINK RAMBLER (Euphrosine)—Deep pink, desirable.
PRAIRIE QUEEN—The old standby red climber.
RUSSELL'S COTTAGE—Dark red; double and full.
SEVEN SISTERS—Variable crimson to white; in clusters.
TENNESSEE BELLE—A bright rose-colored flower.
TRIER—Creamy-white, producing large clusters.
WHITE DOROTHY PERKINS—Pure white in immense clusters.
WHITE RAMBLER (Thalia)—Double white in clusters.
WICHURAIANA—The white memorial Rose.
YELLOW RAMBLER (Aglaiia)—Light lemon-yellow.

THE NEW HARDY CLIMBING ROSES

CLIMBING AMERICAN BEAUTY—All who know American Beauty (and who does not?) will welcome this climbing form. A rank climber covered with enormous American Beauty Roses. Extra fine. 50 cents; two-year plants, \$1.00.
RED DOROTHY PERKINS (Excelsa)—This is the long-looked for Red Dorothy Perkins. We already had the Pink and White and now the Red. If there is a better red climbing Rose than this we do not know it. Rich crimson in immense clusters. 25 cents; two-year plants, 50 cents.
GOLDFINCH—Pale orange, shaded violet, changing to white; borne in immense trusses. 25 cents.
HIAWATHA—Brilliant scarlet, flowering in large clusters; most brilliant and effective. 20 cents; two-year plants, 40c.
THOUSAND BEAUTIES, or TAUSENDSCHOEN (The Great German Rose)—The Germans named it Thousand Beauties, because every Rose (and there are literally thousands of them) is different and everyone a beauty. It is what is termed a variable Rose; that is, the colors run the whole

gamut from delicate, tender rose through the intermediate shades of bright rose, white, yellow and various other delicate tints till it reaches its perfection in its deep carmine coloring. There is no other Rose in cultivation like it. It is a vigorous, strong grower and will ramble all over your porch, pergola, bower, trellis or it will cover the side of your house. It forms a complete drapery with its festoons of flowers that literally hide the plant. One of the most remarkable of Roses. 15 cents, two for 25 cents; two-year-old plants, 40 cents.

VEILCHENBLAU (The Wonderful New Blue Rose)—This is a Rambler, and will thrive anywhere, being perfectly hardy. It has created a great stir in the Rose world, for the talk of a Blue Rose has been going on since time immemorial. It first opens a pink color, quickly changing to a decided violet-blue. When the plant is in full bloom it presents a startling effect. 15 cents each, two for 25 cents; two-year-old plants, 40 cents.

STANDARD VARIETIES OF HYBRID PERPETUAL ROSES

HARDY EVERYWHERE

Price, 10 cents each; Six for 50 cents.

ANNA DE DIESBACH (Glory of Paris)—A lovely carmine-rose.
BOULE DE NEIGE (Ball of Snow)—Pure white; fine.
CLIO—Delicate flesh, with center of rosy-pink.
COQUETTE DES ALPES—Pure white, very full, free; fragrant.
FRANCOIS LEVET—China pink; delicately shaded carmine.
GENERAL JACQUEMINOT—Known as "General Jack;" shining crimson.
GLOIRE DE L'EXPO DE BRUXELLES—Bright crimson; velvety texture.
GLOIRE DE MARGOTTIN—Clear, dazzling red; very fragrant.

GLOIRE LYONNAISE—Pale shade of chamois or salmon-yellow.
LOUIS VAN HOUTTE—Rich crimson, heavily shaded maroon.
MADAME ALFRED CARRIERE—Rich creamy-white, tinged yellow.
MADAME PLANTIER—The ironclad white cemetery Rose.
MAGNA CHARTA—A bright, clear, deep pink, flushed rose.
MARIE BAUMANN—Brilliant, vivid red; good bloomer.
ROBERT DUNCAN—Color bright rosy-crimson; splendid.
ROGER LAMBELIN—Glowing crimson; petals edged white.
VICK'S CAPRICE—Satin-pink; striped white and carmine.

PERNETTIANA ROSES

A new family of perfectly hardy Roses. Can only offer in large field-grown plants (budded) 50 cents each.

ARTHUR R. GOODWIN—The color is coppery orange-red passing to salmon-pink as the flowers expand. A superb combination of color; flowers medium to large and full. Grand.
JULIET—Double flowers of very novel and distinct coloring; outside of petals old gold, interior rich rosy-pink. Extra fine.

LYON ROSE—Crab-red center, coral-red with salmon and chrome-yellow tints. Nothing finer.
RAYON d'OR (Rays of Gold)—In the bud state deep orange opening to a deep brilliant sunflower-yellow. Superb.
SOLIEL d'OR (Golden Sun)—Changing from orange-yellow to reddish-gold and Nasturtium-red. Extra.

"HOME" COLLECTION OF EVER-BLOOMING ROSES ALL BEST KINDS

Price for Collection of Choice "Home" Roses, only 50 cents.

We have made a selection of the very best Roses for winter blooming, embracing a wide range of color. We can recommend this collection to all who desire to grow Roses in the house during winter. They are equally good for planting in the garden.

SAFRANO—The old standby for a winter bloomer; lovely saffron-colored buds of the most delicious fragrance.
PAPA GONTIER—Deep red, very free and sweet.
BRIDESMAID—This is a fit companion for the Bride. It is also planted by the millions for winter blooming. The best deep pink Rose for thus purpose.

BON SILENE—Deep rose, illumined with bright red; a grand winter bloomer; very sweet.
THE BRIDE—The best winter blooming white Rose; planted by the millions by growers of cut flowers; none finer.
ISABELLA SPRUNT—Flowers freely during the winter; flowers of the richest yellow color.

Remember this entire collection of six "Home" Roses for only 50 cents; per single plant, 10 cents. These six "Home" Roses in two-year-old size for \$1.20 or 25 cents each.

"GIANT" COLLECTION Of Two-Year-Old Roses for Immediate Effect.

These large Roses have become so popular among our customers that we devote a great deal of room to them, growing them in constantly increasing number. This fall we have a heavy stock and offer many thousand bushes at the very low figures given. We can usually furnish all the varieties enumerated in the catalogue.

These bushes are two years old, strong and healthy. They make, of course, more of an appearance from the first than does the smaller stock, having practically a year the advantage in all respects—an advantage for which we find many persons willing to incur the additional expense. We advise all of our friends to order at least a part of their Roses in this large two-year-old size. Plant them this fall.

GIANT COLLECTION—Four two-year-old ever-blooming Tea Roses, our selection, sent by mail, all different colors, for 60c.

OUR BEST ROSE COLLECTION

**EIGHTEEN Ever-Blooming Tea Roses
FOR \$1.00
POSTAGE PREPAID.**

They will delight you with exquisite and abundant bloom. This offer cannot be excelled either in quantity or quality. This collection is strictly of our own selection and we guarantee them to be well rooted, to reach you in good condition, and be a fine assortment of colors, all correctly labeled. This offer is only made to induce you to give us a trial, and it will be to our interest to send only a fine assortment of good Roses, well rooted, that are sure to bloom freely the first year. Try them this fall.

Our General Catalogue

for the spring of 1914 will be ready in January. All purchasers from this catalogue, and all who have been customers within the past three years, will receive a copy free at the time it is issued, and without applying for it; others wishing it will please write for it. Should any of our patrons have friends requiring Bulbs, etc., we would be pleased to forward a copy of this Catalogue on receipt of name and address. Customers changing their residence will kindly furnish us with their new address (also state their old address), so we can correct our lists and mail our Catalogue properly.

MISCELLANEOUS ROSES

AMOENA, the Pink-flowering Cherokee Rose—This wonderful beautiful new Laevigata or Cherokee Rose was raised in California and it will sweep the state like wild fire when it is once known. The flowers are the same as the white flowering Cherokee, except that the color is a glowing pink with golden-yellow center. Resembles huge apple blossoms. 15 cents; two-year plants, 50 cents.

ROMANA, the Scarlet-flowering Cherokee Rose—(New.) Of all the Roses we grow this is probably the most beautiful. It first saw the light in California. The color is a rich red with shades of scarlet, center golden-yellow. Resembles huge butterflies hovering above its grand foliage. 30 cents each; two-year plants, 75 cents.

LAEVIGATA, the Single White Cherokee Rose—This is the famous Cherokee Rose so well known in California. Large, pure white flowers with center filled with golden-yellow anthers. 10 cents; two-year plants, 40 cents.

CAMELIA, or Double-flowering Cherokee Rose—This beautiful Cherokee Rose bears double pure white flowers in great profusion. It is in great demand in California. The foliage of this Rose is very distinct, shining as though varnished. 10 cents; two-year plants, 40 cents.

FORTUNE'S DOUBLE YELLOW, or Beauty of Glazenwood—Yellow flaked with carmine; very charming color. 15 cents; two-year plants, 40 cents.

MICROPHYLLA ALBA—A most vigorous grower; very hardy; bears semi-double flowers of a creamy-white. This is the Rose Keystone you hear so much about. 15 cents; two-year plants, 40 cents.

NEW CENTURY (Rugosa)—Hybrid Rugosa. A grand Rose that is entirely hardy, bearing beautiful silvery-pink flowers in clusters. This Rose is in bloom all the time. Extra fine for nurserymen. 15 cents; two-year plants, 40 cents.

SIR THOMAS LIPTON (Rugosa)—The best pure white Rugosa Rose. Strong and vigorous; grows four feet high. Flowers perfectly double, pure snow-white. Fragrant, borne on long stems continuously throughout the season. Absolutely hardy everywhere. Splendid for hedging, cemetery and park work. 15 cents; two-year plants, 40 cents.

WICHURAIANA (From Japan)—It readily adapts itself to any soil and will do well under any conditions. The pure white single flowers appear in greatest profusion during the month of July, after the June Roses are all past. 10 cents; two-year plants, 35 cents.

WHITE BANKSIA, or Lady Banks—A vigorous grower, in California growing to the top of tall trees and completely enveloping the entire tree; small double pure white flowers in clusters, with the true Violet fragrance; very desirable. 15 cents; two-year plants, 50 cents.

YELLOW BANKSIA, or Lady Banks—Same as White Banksia, except color of blooms is sulphur-yellow. 15 cents; two-year plants, 50 cents.

MOSS ROSES

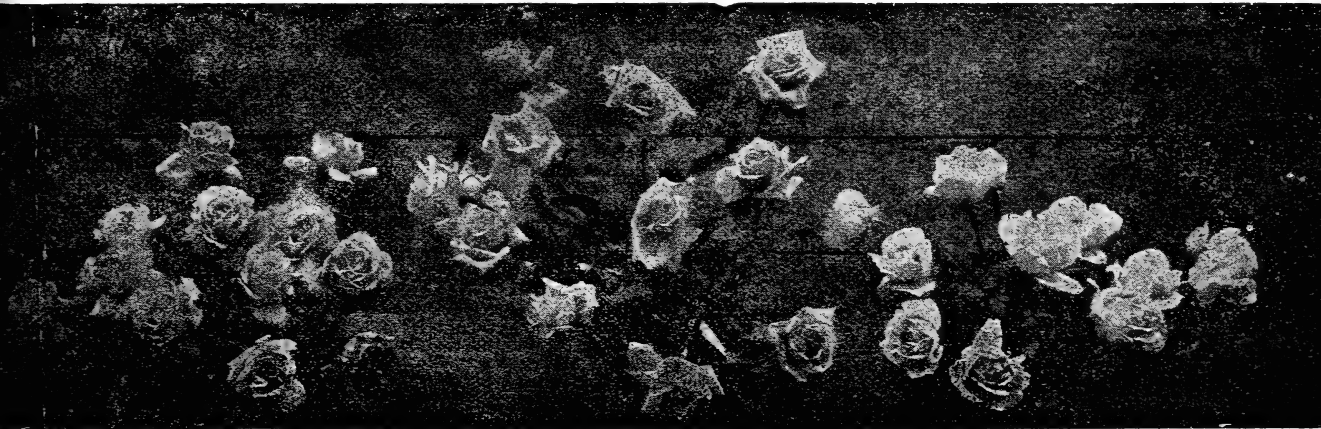
These are probably a sport of the Cabbage Rose. The origin of the double Moss Rose is left to conjecture. They have always been favorites, for what can be more elegant than the bud of the Moss Rose and more delicious than its fragrance. Perfectly hardy. 25 cents, the four for 80 cents; two-year plants, 40 cents, the four for \$1.35.

ELIZABETH ROWE—This is an old favorite with its large deep pink buds well mossed. A beauty.

HENRI MARTIN—Large full flower of deep red; well mossed; fragrant.

MOUSSELINE—Pure white flower, buds heavily and beautifully mossed.

PRINCESS ADELAIDE—Deep blush-pink with buds that are thoroughly mossed.



Carnation Pinks for Winter Blooming

Fine, Large, Field-Grown Plants, set with buds ready for winter blooming

Price, 20 cents each, any three for 50 cents; six for 90 cents.

There is no sweeter flower than the Carnation, and they are, without question, the best of all plants for winter blooming. We have selected nine of the very choicest kinds, including all colors, of this delightful flower, and know you will not be disappointed in getting these varieties. They are large plants ready to begin blooming at once. Many of them will be in bud when we send them to you.

ESTELLE—Color a clear, bright, glowing scarlet; a most continuous bloomer and distinct in color from any other sort offered.

MORNING GLORY—A beautiful light pink-satin color; flowers large size and very freely produced.

JUBILEE—It has perfectly formed flowers; color a rich, bright, dazzling scarlet. We unhesitatingly recommend this sort.

DELLA FOX—Its color is almost indescribable—of a rosy-orange shade, striped and flaked with carmine.

ABUNDANCE—Flowers very large and perfect in form; color a bright rosy-pink with salmon shading.

GENIEVE LORD—As large as the largest light pink ever offered. A few blooms last season measured nearly four inches.

WHITE CLOUD—This variety is the largest white Carnation in cultivation. Often measures four inches in diameter.

WHITCOMB RILEY—The ground color is the faintest blush, lightly penciled in soft pink. The bloom is fluffy.

BON TON—This is by far the darkest Carnation ever seen; brilliant dark red, shaded with richest maroon; fringed petals.

BEAUTIFUL HOUSE FERNS

TO CHEER YOUR HOME DURING WINTER

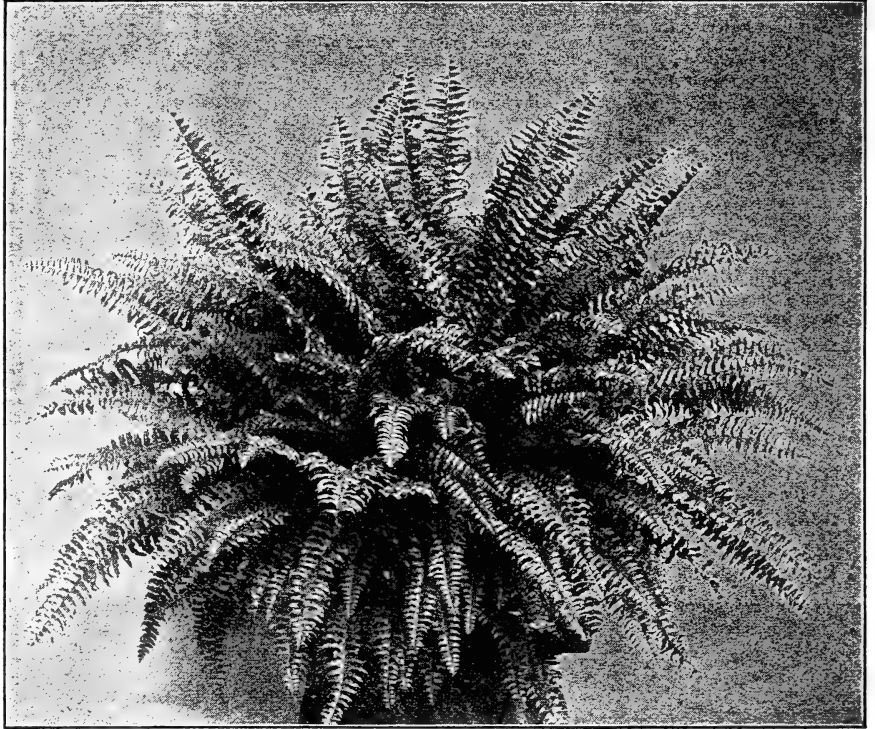
There are no plants grown that are more desirable for the house than the following fine decorative Ferns. They are easily grown, free from insects and disease, and thrive well in the ordinary temperature of the living room. See that the plants have plenty of drainage and are kept well watered; never let dry out for any length of time. Every one of these *Nephrolepis* Ferns is entirely distinct in every way. That we are headquarters for Ferns is evidenced by the choice assortment that we offer. No other firm offers so many distinct and choice varieties. Try us for Ferns.

THE "BIG FOUR FERN."

Nephrolepis Splendida—This is the most wonderful Fern of them all; it originated with G. & R., and is now offered for the first time. It combines the good qualities of the four most popular sorts. It has the grace of a "Boston," the wavy effect of a "Roosevelt," the fluffy effect of an "Ostrich Plume," and the uniqueness of the "Fish Tail." Some fronds will be straight "Boston," others will be true "Roosevelt," in others the ends of the pinnae will be the feathery "Ostrich Plume," while in others the ends of the pinnae will be the genuine "Fish Tail." Then again some fronds will have in a marked degree all of these desirable traits, forming a combination without parallel among Ferns. It well deserves the name of "Big Four Fern." Everyone who sees it goes "daffy" about it. This is without question the most splendid of all the *Nephrolepis*. Be sure and try it. Fine young plants, 35 cents; strong plants, 75 cents.

THE "ROOSEVELT FERN."

Nephrolepis Roosevelt—It is our good fortune and great pleasure to offer this wonderful new Fern, having introduced it in 1910. In this short time it stands second in popularity of all the Ferns, and will soon be more popular than even the old favorite Boston Fern. In general characteristics it resembles the world-famous Boston Fern, but it will sweep that Fern from the boards for two reasons; it produces many more fronds than the Boston, thus making a bushier, handsomer plant. Then the pinnae are beautifully undulated, giving the "Roosevelt" a pronounced wavy effect seen in no other Fern; as the plant ages this effect becomes quite distinct. A charming and most notable variety. Fine young plants, 20 cents; strong plants, 50 cents; extra strong plants, 75 cents.



"The Roosevelt Fern."

THE "TEDDY JUNIOR FERN," *Nephrolepis Teddy Junior*—

"Teddy Junior," the Fern for every household. This grand Fern was introduced the past spring by G. & R. It is a sport from the now famous "Roosevelt Fern," and while its habit of growth is to produce a shorter frond it retains all the valuable characteristics of the parent plant. The fronds are broad and beautifully tapered from base to tip; they droop just enough to make a shapely, graceful plant, permitting it to finish with a fine full center and perfect symmetrical spread. The pinnae are distinctly undulated, giving the fronds an attractive wavy appearance, which adds materially to their charming decorative effect, and thin, scraggy foliage is never seen in this variety.

"Teddy Junior" will produce about four times more fronds than any other Fern ever introduced; finishing with fifty to sixty fronds in a four-inch pot, while twelve to fifteen is the average number other varieties will produce in the same size pot. It is such a compact, vigorous grower that it will thrive under most adverse conditions, making an exceptionally rapid growth and producing a plant of rare beauty and perfection in the average dwelling house without special care or attention. Owing to its habit of producing the great quantity of massive foliage in small pots, this Fern makes the finest pedestal plant ever produced, and will prove indispensable for decorating dining room or library tables and numerous other places in the home where limited space will not permit using large pots or varieties with longer fronds. Fine young plants, 35 cents. To introduce this Fern quickly we are making a special offer of a fine strong plant at 50 cents; extra strong plants, \$1.00; fine specimens, \$2.50.

THE "PHILADELPHIA LACE FERN," *Nephrolepis Elegantissima*—The small size pinnae, or leaflets, are subdivided into perfect miniature fronds; the side pinnae stand at right angles to the midrib of the fronds, on edge instead of flat, giving both sides of the main frond the same beautiful appearance. It is impossible to conceive of the beauty and grace of this wonderful Fern from description. Fine young plants, 15c; strong plants, 40c; extra strong plants, 60c.

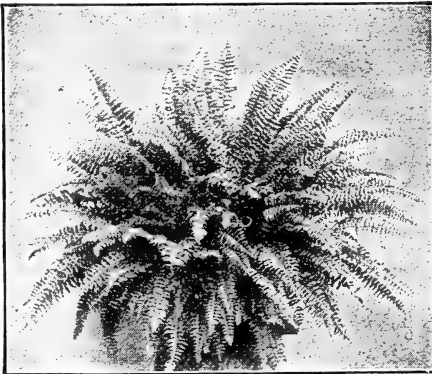
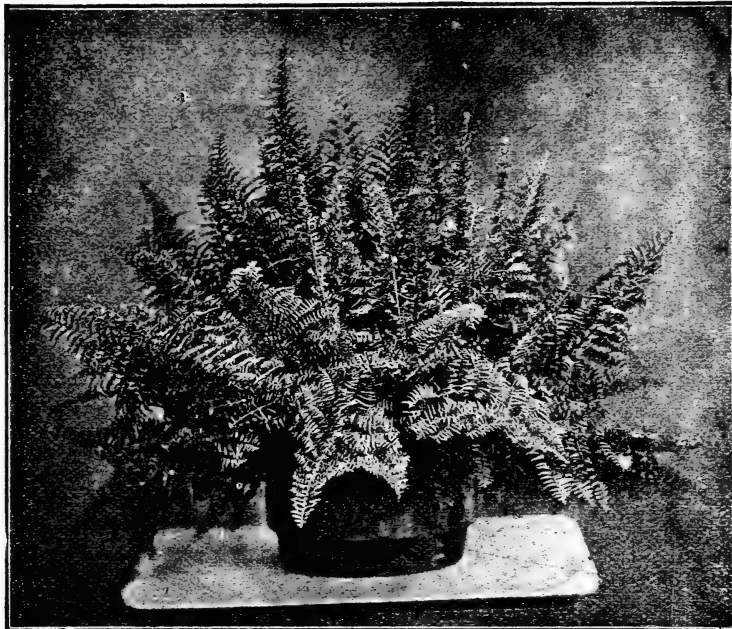


Photo of "Teddy Junior."



Fronde of "Teddy Junior," the wonderful new Fern.



The "Ostrich Plume Fern."

THE "GOLD MEDAL FERN," *Nephrolepis Piersonii*—This Fern received a gold medal from the Society of American Florists and Ornamental Horticulturists, and is the only gold medal ever awarded by them for any plant whatsoever. An entirely new form of the Boston Fern. The pinnae subdivide, making miniature fronds which are superimposed on the main fronds, looking as if two or even three were condensed in one, giving the plant a graceful, feathery and plummy effect. Fine young plants, 15 cents; strong plants, 40c.

THE "CRESTED FERN," *Nephrolepis Scholzeli*—It is a sport from Scotti, possessing the merits of that most popular variety, but with the pinnae subdivided, giving it a fine crested appearance. The fronds, like in Scotti, stand erect, with a graceful arch forming a plant of ideal shape, and they never break down, giving the plant a ragged appearance as is so often the case with other plumed forms; furthermore, the loose, elegant arrangement of the fronds, allowing a free circulation of air through the foliage, prevents the center of even the largest specimen from becoming defective or yellow. The smallest salable plants perfectly express the type, and in every size are models of beauty for table decorations. Fine young plants, 15 cents; large plants, 40 cents.

THE "OSTRICH PLUME FERN" *Nephrolepis Whitmanii*—A great Fern. In fact, it is a plant that appeals to everyone, and on that account will prove a much more valuable and profitable plant than the Boston Fern, which has had the most phenomenal sale of any decorative plant that has ever been grown, but which cannot be compared to the Ostrich Fern for beauty and general effectiveness. Everyone who has seen it is charmed with it. As someone has expressed it, "There is nothing like the Ostrich Plume Fern in cultivation. In decorative effect it so far outdistances the original variety that there is positively no comparison to be made. We consider it the most valuable novelty that has been introduced in many, many years." It has taken gold medals wherever shown. Fine young plants, 25 cents; strong plants, 50 cents.

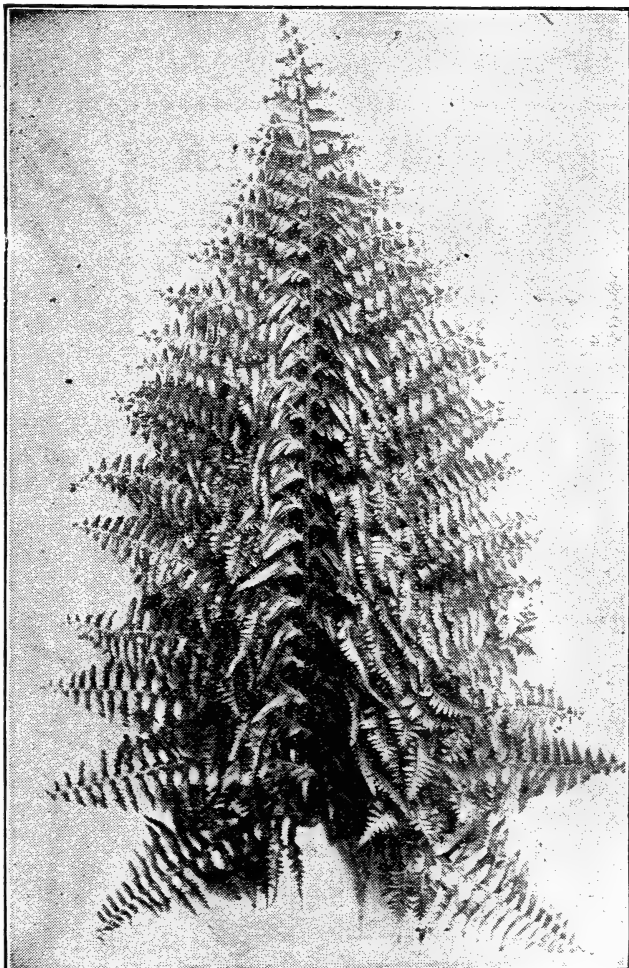
THE "BABY'S BREATH FERN," *Nephrolepis Goodii*—This has the finest foliage of all the Ferns. It is so delicate that a lady on seeing it exclaimed, "Call it the Baby's Breath Fern, as it is so dainty in texture that a baby's breath would set its fluffy foliage in motion." The fronds are very fine and filmy, on which account it has been called by some the lace Fern. It is an improved variety and the best of its type. Nothing is daintier or more exquisite than well-grown specimens in any size. Our reputation for it that no Fern in existence can compare with Baby's Breath" in fluffiness. Fine young plants, 20 cents; strong plants, 50 cents.

THE "NEWPORT FERN," *Nephrolepis Scotti*—Of much dwarfer and bushier growth than the Boston Fern. The fronds droop gracefully, and are not as long and heavy as the Boston. It is a rapid grower, and to see it in all stages of growth from a runner in the bench to a fourteen-inch pot specimen will convince you that it will be in great demand as a house Fern. This has always been a favorite variety. Fine young plants, 15 cents; strong plants, 40 cents.

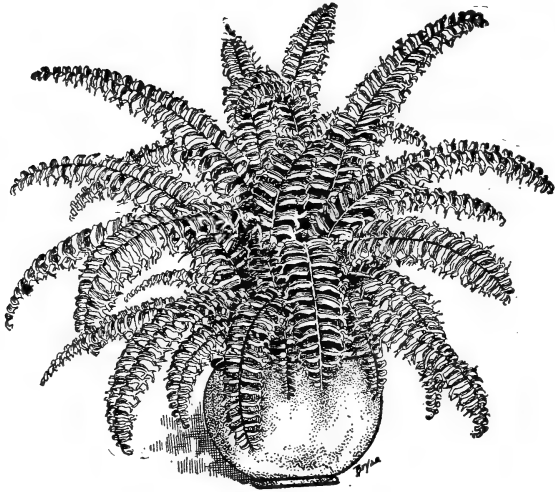
THE "FLUFFY RUFFLES FERN," *Nephrolepis Superbissima*—This new Fern is quite different from all other Ferns. Its distinguishing characteristics are its dark green foliage, darker than any other Fern, its dense growth being much more compact, and its irregular shaped fronds which give it the name of "Fluffy Ruffles Fern." The fronds are very heavily imbricated, the pinnae overlapping and are so formed as to resemble miniature Ferns, giving it the appearance of a Fern within a Fern. The plant is very sturdy in its habit and the fronds firm and rigid, never break down, so that it will stand more knocking around than any other Fern. Fine young plants, 25 cents; strong plants, 60 cents.

THE "LONDON FERN," *Nephrolepis Todeaoides*—A feathery fronded variety similar to the Ostrich Plume variety, the fronds being more stiff and erect and the pinnae more finely divided. A fine Ostrich Plume sort, and we recommend it in all respects. Fine young plants, 15 cents; strong plants, 40 cents.

WE ARE HEADQUARTERS FOR FERNS



New Fern "Baby's Breath."



The Fish Tail Fern.

THE "PARLOR FERN," *Nephrolepis Whitmanii Compacta*—This is a condensed form of the "Ostrich Plume Fern," with valuable characteristics added which are not evident in the parent, the pinnae subdividing, making miniature fronds which are superimposed on the main fronds, looking as if two or more were condensed in one. Graceful beyond description. Fine young plants, 20 cents.

THE "OLD ORIGINAL SWORD FERN," *Nephrolepis Exaltata*—This is the "old original Sword Fern," the "daddy" of them all, the one plant from which all the *Nephrolepis* we offer sprang. It is entirely different from any of its progeny, having narrow fronds that are long and of very erect growth. For this reason it is more largely used as a center piece in vases than are any of its descendants. Fine young plants, 10 cents; strong plants, 35 cents.

SPECIAL OFFER

THE SIXTEEN BEAUTIFUL
FERNS AS NAMED COSTING

\$3.15 SENT FOR \$2.75

THE "FISH TAIL FERN," *Nephrolepis Davallioides Furcans*—This is a grand Fern, entirely distinct from any of the other varieties of *Nephrolepis*. Throughout the South and especially at New Orleans this Fern takes precedence over all others. The ends of the pinnae are so formed as to resemble a fish tail, giving the fronds a crested appearance, very effective. It grows into the most shapely plant of any of the *Nephrolepis*. Grand for house culture. Fine young plants, 20 cents; strong plants, 50 cents.

THE "BOSTON FERN," *Nephrolepis Bostoniensis*—In the vicinity of Boston no other plant is so extensively used as this graceful *Nephrolepis*, which differs from the ordinary Sword Fern in having much longer fronds, which frequently attain a length of six feet. These arch and droop over very gracefully, on account of which it is frequently called the Fountain Fern. This drooping habit makes it an excellent plant to grow as a single specimen on a table or pedestal. This Fern should not be compared to the Ostrich Plume Fern, as they are of an entirely different growth; both have their place and both are beautiful and desirable. Fine young plants, 15 cents; strong plants, 40 cents; extra strong plants, 60 cents.

THE "TARRYTOWN FERN," *Nephrolepis Elegantissima Compacta*—The fronds are considerably shorter than those of *Elegantissima*, and throw a great many more crowns, making it a very bushy, compact, symmetrical plant. It forms a round mass of foliage that makes it particularly desirable and valuable. One of the really great Ferns. Fine young plants, 15 cents; strong plants, 40 cents.



The "Boston Fern."

DWARF FERNS FOR FERN DISHES



Fern dish for table decoration.

We have selected a few of the hardest and most satisfactory varieties for filling Fern dishes, than which there is no prettier table decoration. Price, 10 cents each, or we will send six distinct Dwarf Ferns for 50 cents. We have six other distinct Dwarf Ferns. We will send the twelve for 75 cents. These will make a fine full Fern dish for the table.

ADIANTUM FORMOSUM—The popular Maiden Hair Fern; very beautiful and graceful.

ASPIDIUM TSUSSIMENSE—The most valuable for Fern dishes; of strong, but dwarf and graceful habit, of good color and of the best keeping qualities. A clean, good grower, and very ornamental.

PTERIS ADANTOIDES—One of the finest Ferns. Has very decorative and handsome fronds.

CYRTOMIUM FALCATUM, or HOLLY FERN—A beautiful and rapidly growing Fern that succeeds exceedingly well, small plants making fine specimens in a short time. Fronds resemble branches of holly, from which it takes its name.

PTERIS CRETICA ALBO-LINEATA—A very pretty and useful variegated variety, with silver markings.

PTERIS WIMSETTI—A beautiful low-growing Fern, suitable for table dishes.

The New French Hydrangeas

Let us tell our friends that these new French Hydrangeas are the most meritorious plants brought out in years. They have enormous trusses of bloom that completely hide the plant. They are half hardy and may be planted in the latitude of Philadelphia and in the Gulf and Pacific states. They are also fine as house plants, blooming in the spring time about Easter. When kept at a temperature of seventy degrees out of doors they bloom about June.

The Famous Blue Flowered Hydrangea, MOUSSELINE—With us a beautiful plumbago-blue. The introducer describes it as a beautiful mauve-rose with cream-colored center; the flower heads are large and held erect; a decided acquisition. If you desire a beautiful deep blue Hydrangea flower get this one. **Young plants, 30 cents; strong plants, 60c.**

E. G. HILL—This is the newest one and the very best, and is by far the very best pink that we have yet tried; trusses of immense size. Color a most pleasing shade of baby pink that does not fade. Growth vigorous, foliage large and attractive. It is one of the easiest to force into bloom during the spring, coming into flower early. **Young plants, 35 cents; strong plants, 75 cents.**

All the following New Hydrangeas, young plants, 20 cents; strong plants, 40 cents.

AVALANCHE—A splendid large white, which has made a reputation for itself during the past two seasons. An easy variety to force.

BOUQUET ROSE—Large trusses of well-formed flowers, rosy-amber turning to bright pink; has proven a special favorite in the New York market this season.

FRAICHEUR—Very large, regularly shaped flowers, white, delicately suffused with rose. Very free flowering.

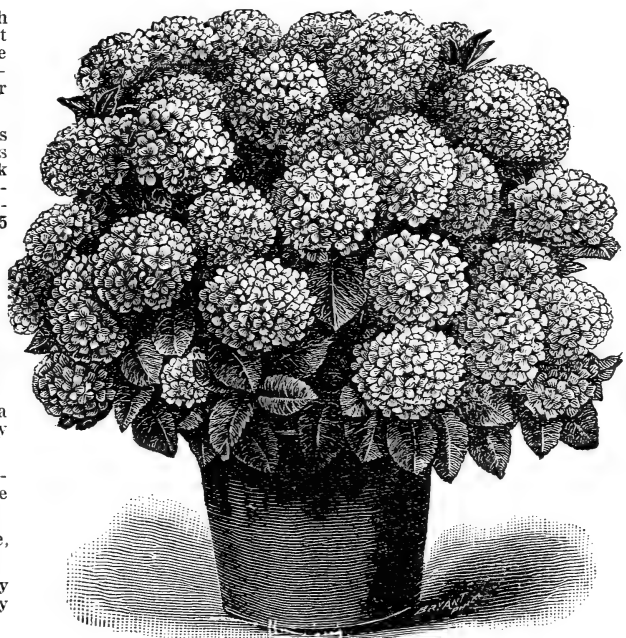
GENERAL DE VIBRAY—A favorite wherever seen. Very large heads of bright rose colored flowers. A splendid early forcing variety.

LA LORRAINE—Very large flowers, pale rose, turning to bright pink; has become a general favorite during the past two years.

MONT ROSE—Immense panicles of clear flesh-rose, entirely distinct. One of the very best early flowering varieties.

Mlle. RENEE GAILLARD—Very large panicles of milky-white, irregularly dentated flowers, which is certain to become popular; it is entirely distinct. One of the best growers of Hydrangeas says that this variety should really have been awarded the silver medal given to Mme. Emile Mouillere last year as the best white.

MME. MAURICE HAMAR—A delicate flesh-rose color; a vigorous grower, the individual flowers as well as the trusses being very large; one of the easiest to force. Early.

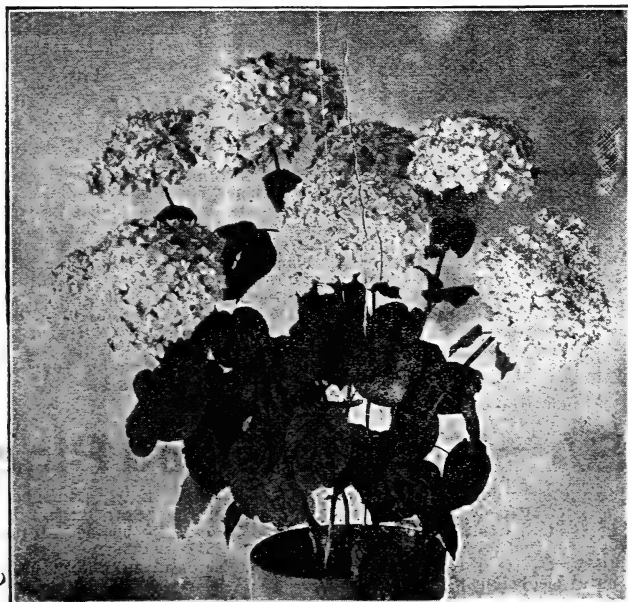


New French Hydrangea.

MME. E. MOUILLERE—This has been the favorite white variety in the New York market this year, very free flowering, of good size and form. Awarded silver medal at the National Flower Show at Boston last year. A great favorite with English growers, one London grower known to us handling over thirty thousand of this variety alone.

ORNAMENT—Large pretty mauve-pink flowers; very free flowering.

SOUVENIR DE MME. E. CHAUTARD—One of the very best, of splendid erect habit; very robust. Fine sized heads of bright rose-colored flowers. One of the very best of the Bouquet type.



Hydrangea Arborescens Grandiflora Alba, or "Hills of Snow."

THE KING OF ALL SHRUBS,

The New

**Hydrangea Arborescens Grandiflora
Alba, "Hills of Snow"**

**The Most Valuable Hardy Shrub Ever Introduced.
Plant in the Fall.**

This is the great new hardy shrub that has come to gladden our yards and gardens. We place it first and foremost of all shrubs. It makes a perfectly round symmetrical bush that is covered from June to August with handsome large pure white flowers. Be sure and plant this new hardy shrub, it will please you greatly. **Price, young plants, 15 cents each; two for 25 cents. Strong two-year-old plants, 40 cents each; three for \$1.00. Large specimen plants to bloom at once, 75 cents each.**

FLOWERING BEGONIAS

These Begonias are fine for house culture, as all will flower during the dark days of winter. Price, except where noted, 10 cents each; six for 50 cents.

ALBA PICTA—Long, pointed, slender leaves, thickly spotted with silvery-white; foliage small and elegant; lovely pink flowers.

ARGENTEA GUTTATA—Lovely green foliage, with spots of silvery-white.

CORALLINE LUCERNE, The Wonderful New Flowering Begonia—This new Begonia has simply taken everybody who has seen it by storm. There was not a single lady or florist who visited our greenhouses the past spring that did not purchase this Begonia after they had seen it in flower. It certainly is a wonder. The blooms last from a month to six weeks, and are borne in immense clusters almost hiding the plant. The color is bright coral-red, changing to a delicate pink. It is past the power of speech to describe it. A wonder. Fine plants, 25 cents.

OLIOSA—A beautiful fine foliage variety; pink flowers.

UCHSOIDES COCCINNEA—This beautiful plant makes handsome specimens, with its graceful branches and pendulous flowers of bright rosy-pink. Very floriferous.

BRACILIS LUMINOSA—Bright scarlet, so bright as to be luminous.

MARGUERITE—Bronzy-green foliage, light rose-colored flowers; elegant.

PICTA ROSEA—Bright silvery-pink flowers. Extra fine.

PRESIDENT CARNOT—Upper side of foliage deep green, under side plush-red; flowers beautiful coral-red.

RUBRA—Has strong, slender branches, gracefully drooping under heavy waxen leaves and pendent panicles of coral-colored flowers as large as a hand. Medium-sized plants are frequently seen with more than twenty such panicles at a time.

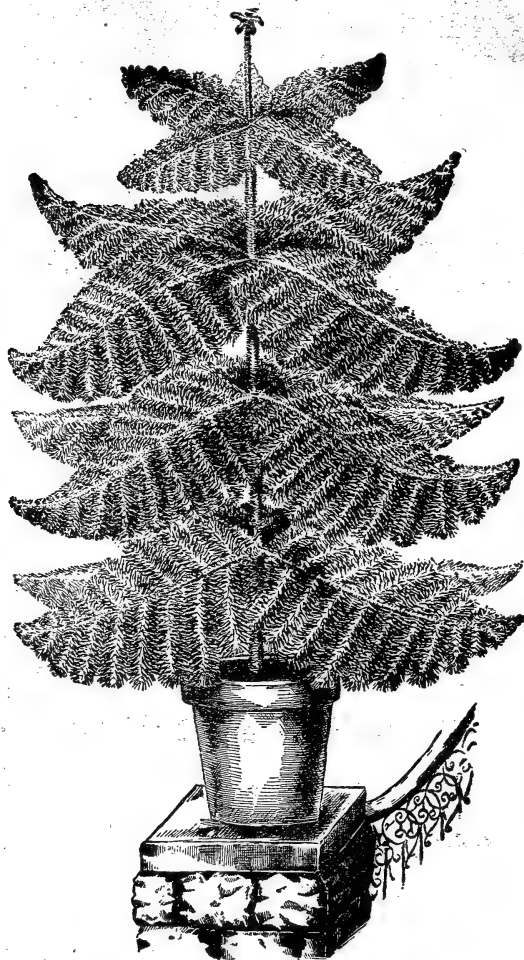
ROBUSTA—Bright rose and pure white. Coral-red buds. This is a very desirable variety.

SANDERSONI—(The Coral Begonia.) One of the best flowering Begonias. The flowers are of a scarlet shade of crimson, borne in profusion for months at a time. Resembles coral.

THURSTONII—Metallic-green leaves, with shell-pink flowers.

VERNON—A bedding Begonia, deep rose flowers.

SPECIAL OFFER—The Fourteen Choice Flowering Begonias for \$1.35.



Araucaria, or Christmas Tree Palm.

ARAUCARIA EXCELSA—Norfolk Island Pine

Various names have been suggested for this grand plant to properly convey to the mind the appearance of it. Some have called it the "Christmas Tree Palm," from its resemblance to a Christmas tree; others have called it the "Star Palm," because the leaves are arranged to form a perfect star, but no descriptive name can give an adequate idea of its beauty. It has deep green, feathery foliage, arranged in whorls, rising one above the other at regular distances. Its symmetry of form, grace and beauty of foliage are unequaled in the vegetable kingdom. It is easily grown in the house, and is highly ornamental. It requires the same culture as the Palm. Indeed, as a decorative plant for the house, this is one of the handsomest and most serviceable plants in our collection.

SPECIAL OFFER—Strong specimen plants that sell anywhere for from \$1.25 to \$1.50 each for only 50 cents while they last, you to pay express charges. Better buy while they are cheap.

CYCLAMEN PERSICUM GIGANTEUM

Or Persian Violet

This is a decided improvement over the old variety, being of a more robust habit and stronger grower. Produces flowers on short, stout stems and of immense size, often measuring, on well-grown bulbs, two inches in diameter. The foliage is also beautiful, and it is a charming winter bloomer. 10 cents each.

CHINESE PRIMROSES

These are grand winter blooming plants. We have three colors, White, Pink and Red. 10 cents each.

NEW EVER-BLOOMING BABY PRIMROSE "MALACOIDES"

This is the freest blooming plant we know of, blooming continuously during the entire season. Plants in very small pots have from fifteen to twenty sprays of beautiful light pink flowers on stems ten to twelve inches high at one time. 10 cents each.

PRIMULA OBCONICA

Always in Bloom

This is a charming plant for winter—in fact, we know of none that is better adapted to house culture than this one. It is not susceptible to changes of temperature that most plants are subject to. It bears its elegant panicles and sprays of bloom of a delicate pink and white in the greatest profusion. It is certainly elegant. 10 cents each.

CAMELLIA JAPONICA

This is the Famous Southern "Japonica"

Leaves glossy-green, flowers of exquisite beauty and waxy texture. From pure white to crimson, in almost endless variegation, the pure white ones generally prized above the colored varieties. Culture nearly related to that of the Azalea, but their success is more certain. Requires shade and moisture throughout the hot season. Time of blooming is in winter and early spring. Requires moderate and uniform temperature, with as little artificial heat as possible. When set with flower buds great care must be taken in watering—when left too dry the buds are sure to drop. We have a fine assortment of all colors, white, red, rose, pink and variegated. Plants two to two and one-half feet high, 75 cents each; any four for \$2.85; the set of twelve distinct kinds for \$8.50. All our Camellias are double-flowered.

"Gold Medal" Chrysanthemums

Price, 10 cents each; any three, your selection, for 25 cents; any fifteen for \$1.00.

Every Chrysanthemum in this list has won a gold medal—indeed, some of them have won several. You can order from this list with the assurance that any one of them will be a beauty. The price we offer them at is very low, as you will see by comparing them with any other flower catalogue published.

AUSTRALIAN GOLD—Deep golden-yellow of the richest hue; of immense size; the petals are feathery, incurved and whorled.

BENJAMIN GIRAUD—Rich crimson-maroon; quite unequaled for brilliancy and velviness.

BLACK HAWK—An extra fine deep crimson variety of the largest size; none finer of its color.

ESTELLE—One of the best white varieties for exhibition or commercial purposes; extra.

FRANK THOMPSON—Beautiful white, deeply flushed pink. This grand variety has won many medals and prizes.

GOLDEN WEDDING—Flowers of mammoth size, deep golden-yellow; nothing finer among the yellows; shines like burnished gold; the standard for measuring color.

HELEN BLOODGOOD—A splendid pink variety; high and bright in color; globular form; full; extra good in every point.

INTENSITY—An extra fine crimson variety; flowers are very large and exceedingly double; extra desirable in every way.

IVORY—A favorite early white variety, always seen at the exhibitions; one of the finest of the entire "Mum" family.

MAJOR BONAFFON—One of the very best deep golden-yellow Chrysanthemums; beautiful flower both in form and color; incurved.

MAUD DEAN—An immense pink variety; finely incurved petals broadly shell-shaped; one of the largest flowers exhibited in the fall shows; almost a pure self-pink.

MRS. JEROME JONES—One of the finest white Chrysanthemums ever raised; flowers of exquisite form and finish; grand.

MISS FLORENCE PULLMAN—This variety is of mammoth size, purest snow-white in color; very broad, heavy, deep flower, measuring fourteen inches in diameter.

MISS MINNIE BAILEY—One of the grandest all-pink Chrysanthemums; in finish it is exquisite, showing not the slightest trace of coarseness.

MODESTO—Still the best commercial yellow; has no faults.

MONROVIA—Brilliant straw color; incurved, carrying its flowers on long, stiff stems; very large, if not the largest in this line of color; a large, grand flower.

MRS. HENRY ROBINSON—This is another early white commercial Chrysanthemum of great merit; large, double, snow-white, beautiful.

MRS. PERRIN—Still the brightest of all the pinks; beautifully formed.

MRS. W. B. CHAMBERLAIN—The blooms are eight to ten inches in diameter; the color is a delicate lavender-pink; petals incurved.

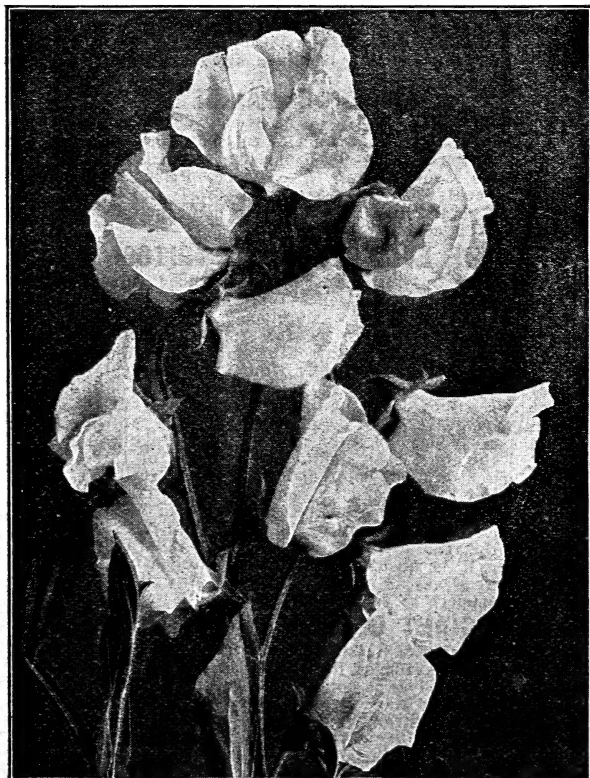
PRESIDENT WM. R. SMITH—Beautiful pink, tinted delicate lemon; has always been a great favorite.

ROBERT HALLIDAY—A perfect flower of deep golden-yellow; has a fine color and decorative form; extra fine.

VIVAND MOREL—This grand variety has literally leaped into popularity; flowers so large as to startle you; the color shades from a few rows of lavender-pearl to the richest pink.

WM. DUCKHAM—An immense Japanese, colossal in size and graceful in form; color tender pink.

WM. H. CHADWICK—A grand double white of fine size and great substance; very rounded in form, incurving and full; by far the best of its style, and a prize winner wherever shown.



Spencer Type of Sweet Peas.

ASPARAGUS PLUMOSUS NANUS

(The Climbing Lace Fern.) This graceful climber has to a great extent taken the place of the once popular Smilax in all fine decorations. It possesses the advantage of being much more graceful, its foliage being finer than that of the most delicate Fern, and will last for weeks after being cut, the whole plant being of a bright, cheerful green. It is an excellent house plant, succeeding under almost any condition. Price, 10 cents each; strong plants, 25 cents each.

ASPARAGUS SPRENGERI

(The Emerald Feather.) A most desirable species, especially useful to grow as a pot plant for decorative purposes or for planting in suspended baskets. The fronds are frequently four feet long, of a rich shade of green, and most useful for cutting, retaining their freshness weeks after being cut. It will make an excellent house plant, as it withstands dry atmosphere and will succeed in almost any situation. Price, 10 cents each; strong plants, 25 cents.

SWEET PEAS

Plant Sweet Peas South of the Ohio River in the Fall—Try Fall Planting and be Surprised—See Our Spring Book for Varieties.

Everyone who has a yard ought to grow quantities of this sweetest of all flowers, that is not only a beautiful low-growing vine for garden and decoration, but one of the most useful of all in furnishing material for vases, bouquets and all cut-flower work. Plant quantities of these lovely flowers and cut them with a lavish hand, for every flower you pick, two will come to fill its place. For the largest and finest blossoms, dig a trench six inches deep, put in two inches of rotten manure, a little earth and sow the seed over this three inches apart in the row, covering an inch and a half. Do this during the month of November or just before freezing weather, and as the plants grow, fill up the trench around them with rich earth. Such planting will produce enormous quantities of flowers of the largest size. Best mixtures of Spencer type Sweet Peas, 5 cents per packet; 15 cents per ounce.

HARDY CLIMBERS

CLEMATIS PANICULATA—Covered in August and September with a sheet of clustered snow-white bloom of the most delicious fragrance. An arbor or portico over which this Clematis is trained is a wall of white for the time being, and it blooms when nearly all other vines have ceased blooming. Perfectly hardy; grows rapidly. Fine vines, 15 cents, two for 25 cents. Strong two-year field plants to bloom this year, 25 cents each.

AMPELOPIS VEITCHII—(The Boston Ivy)—Clings firmly to any wall, building or tree. Green leaves in summer, changing to red in the fall. Price, 10 cents each; two-year-old plants, 25 cents; three-year-old plants, 40 cents.

DUTCHMAN'S PIPE—(Aristolochia Siphon)—A very rapid-growing hardy climber. The flowers are long and shaped like an old Dutch pipe. Price, 20 cents.

THE WONDERFUL JAPANESE KUDZU VINE—JACK AND THE BEAN STALK VINE—This is the most rapid growing vine that anyone knows of. By measurement it has been known to grow twenty feet in a week. The foliage is large and tropical. It is entirely hardy. Everyone has trouble in getting nursery grown plants of this to grow. We have prepared and offer pot grown plants, the kind that has the crown to the plant and the ball of earth to the roots, and you try to stop them growing and see if you don't run into a snag. This is proving a great forage plant in the South. All kinds of stock prefer it to hay or other coarse feed. Try it. Price, 20 cents each; two for 35 cents.

CINNAMON VINE—Bears white flowers with fine cinnamon fragrance. Price, 5 cents each; six for 25 cents.

HONEYSUCKLE AUREA RETICULATA—(Golden-Leaved.) A variety with beautiful variegated foliage of yellow, white and pink. Price, 10 cents.

HONEYSUCKLE CHINESE EVERGREEN—Sweet-scented. Blooms nearly all the season; deliciously fragrant, flowers buff, yellow and white. Price, 10 cents.

HONEYSUCKLE HALL'S JAPAN—(Sweet Scented.) This is the most consistent bloomer of the class, being literally covered all summer with beautiful yellow and white flowers; very fragrant. Price, 10 cents each.

HONEYSUCKLE SCARLET TRUMPET, or RED CORAL—A rapid grower, bright red with trumpet-shaped flowers. This is the old, well-known variety. Price, 10 cents.

HONEYSUCKLE YELLOW TRUMPET—Golden, trumpet-shaped flowers; fragrant. Price, 10 cents.

THE SET OF FIVE HONEYSUCKLES for 40 CENTS.

ENGLISH IVY—This climber is in great demand for covering walls. Plant in the least exposed situation. Price, 15c.

CHINESE MATRIMONY VINE—Pale purple flowers followed by scarlet berries. A rapid and desirable climber. 10 cents.

CHINESE WISTARIA—Desirable for porches, trellises, etc., and when in full bloom is truly magnificent. It flowers in early spring, in long, drooping racemes, resembling in size and shape a bunch of grapes. 10 cents; large plants, 25 cents.

THE WONDERFUL

NEW LEMON PONDEROSA

Nothing that has ever been brought to our notice in the plant line has caused half the commotion that this wonderful Lemon has. It is a true ever-bearing variety. On a plant six feet high no less than eighty-nine of the ponderous Lemons were growing at one time. It was a beautiful sight to see. The tree was blooming, and at the same time had fruit in all stages of development, from the size of a pea up to the ripe fruit, showing it to be a true ever-bearer. Fruit has been taken from this tree weighing over four pounds. The Lemons have very thin rind for such large fruit. It is the juiciest of all Lemons, makes delicious lemonade, and for culinary purposes cannot be excelled. It is not uncommon to make twelve lemon pies from one Lemon. We have the entire stock of this ponderous Lemon and guarantee the trees to produce the same large fruit. No budding or grafting necessary. Ponderosa Lemon is sure to become popular when it is known. It fruits when quite small, and makes a lovely house plant. Everybody can grow his own Lemons; it will fruit freely each year. Thrifty young plants, 10 cents each; large plants, two feet high, 50 cents each.



Ponderosa Lemon.

OTAHEITE ORANGE

This valuable and distinct variety of the Orange family is a dwarf, compact grower, with glossy, deep green foliage, which has a decided odor of the Orange tree of Florida, and is exceedingly floriferous, producing a wonderful profusion of pure white flowers of the most delicious fragrance. Otaheite fruits immediately after flowering, bearing fruit about one-half the size of the ordinary Orange, retaining in a marked degree its sweetness. This unique Orange cannot be equaled as a winter-blooming pot plant for house culture. Requires but little sunlight, and flowers and fruits when but twelve to fifteen inches high. With a couple of plants of it you can have an abundance of the far-famed and delicate and fragrant Orange blossoms. We have grown a large stock of clean, vigorous plants that will bloom and fruit at once. Good plants, 10 cents each; large, strong plants to bloom and bear profusely at once, 40 cents, 50 cents and \$1.00 each, according to size.

BRUGMANSIA, OR ANGEL'S TRUMPET

Here is a plant for the masses. It grows easily, blooms freely, and the flower is something to be proud of. The Brugmansia blooms indoors in winter and in the garden in summer. The plant has large, tropical leaves, with blooms eight inches long by six inches wide at the mouth, resembling a trumpet, hence the name "Angel's Trumpet." Pure white in color and as fragrant as a Jasmine. Blooming plants, 20 cents each.

EMPEROR PANSIES

Our Emperor Pansies are the best the world produces. They are the choicest large-flowering sorts, both of European and American growers. It has been our aim to make this the finest strain of this favored flower in existence. Price, 5 cents each; six for 20 cents; 35 cents per dozen; forty for \$1.00.

SEED OF EMPEROR PANSIES, 10 cents per packet; three packets for 20 cents.

THE EVER-BLOOMING TRITOMA

The greatest bedding plant ever introduced, surpassing the finest Cannas for attractiveness and brilliancy, equal to the Gladiolus as a cut flower, and blooms incessantly from June until December, regardless of frost. Plants perfectly hardy in open ground all winter south of Philadelphia. Further north they must be protected or wintered in the cellar like the ordinary Tritoma. Just bury the roots in sand; nothing more is required. Should be planted out very early in the spring and will commence growth and bloom at once, growing larger and finer every day. Plants show six to twenty grand flower stalks all the time, each holding at a height of three to four feet a cluster of flame-colored flowers of indescribable beauty and brilliancy. Each cluster keeps perfect several weeks, and when it fades several more are ready to take its place. Fall frosts do not kill it or stop its blooming, and it is as brilliant as ever long after all other garden flowers have been killed. For cutting it is unsurpassed, and the beautiful long spikes keep several weeks in water. Strong plants that will bloom the first summer, 15 cents each; two for 25 cents.

NEW GIANT COLEUS, CHRISTMAS GEM

(Brilliance or Dr. Ross.) Leaves immense, eight to twelve inches long, looks like a Rex Begonia and just as beautiful. Cannot be excelled as a pot plant. The name aptly describes the appearance of this variety, which belongs to the giant-leaved section; of strong, vigorous habit, growing from two to three feet high, with leaves often nine to ten inches long, which are of bright carmine, shading off to a deep maroon, the margin being yellow and green, the whole leaf having a rich velvety luster. Price, 20c each; three for 50c.

PEPEROMIA MUSCOSA, or SILVER-LEAVED BEGONIA

This is also known as the Watermelon Begonia. Here is a most beautiful plant for pot culture; easy to grow and thrives anywhere; leaves deep olive-green, distinctly marked with silvery-white. Thick and waxy-like; leaves distinctly variegated white and green, and have the appearance of being powdered with frosted silver. Price, 10 cents.



Silver-Leaved or Watermelon Begonia.

OLEANDERS

These old-fashioned shrubs are becoming immensely popular again. We are growing and selling them by thousands. No plant makes more handsome specimens in tubs for the veranda or yard. Can be wintered in the cellar. We have four colors to offer.

LUTEA—Has double primrose-yellow flowers of a lovely shade, also fragrant. Scarce. 15 cents each.

ROSEA—Has double pink flowers. The old favorite. Very sweet. 15 cents each.

LILLIAN HENDERSON—Has double white flowers of the largest size. Fragrance like the old double pink. Scarce. 15c each.

VARIEGATA—Has variegated foliage; green, broadly edged with creamy-yellow. Double pink flower. 15 cents each.

THE FOUR DIFFERENT COLORS OF OLEANDERS FOR 50c.

RUELLIA MOKOYANA

This is a charming indoor plant for culture in pots or may be used in vases and baskets; of bushy spreading habit and finely marked leaves, which are beautiful olive-green, delicately veined with silver and rich purple underneath. A neat and handsome plant, always bright and pretty. The flowers are exceedingly beautiful, trumpet shaped and of a rosy-lavender color, almost covering the plant in their great profusion. 15 cents each.

SWEET GERMAN MYRTLE

The Jew or Bride's Myrtle

This is a handsome, upright, evergreen plant, suitable for pot culture in the house, has small glossy green leaves that are very fragrant. This is scarce and rare. Fine plants, 15 cents.

MEXICAN FIRE PLANT

Poinsettia Pulcherrima

Native of Mexico. A common plant of the tropics, and well known in Northern hothouses for the great scarlet bracts surrounding its flowers, produced in winter, and often remaining bright for months at a time. Does well anywhere in Florida, outdoors, and anywhere in the North as a house plant, growing to large size. It is a splendid object from Thanksgiving to March 1. If cut by frost, it sprouts up readily. Price, 20 cents each.

SANSEVIERA ZEYLANICA

(Zebra Plant.)

A beautiful plant, specially adapted for the decoration of drawing rooms and halls, as it stands dust and drought with impunity and requires scarcely any water. The leaves, as shown in cut, are beautifully striped crosswise, with broad white variegations on a green ground. It is a rare and beautiful plant, which should be abundantly grown for positions out of reach of sunshine, where other plants will not thrive.

It can be placed in any position in any room and do well. It has a singular beauty for decorative purposes which other plants do not possess, and it is useful both in winter and summer. For vases and baskets it is a fine centerpiece, and grows splendidly out of doors during summer. Fine plants, 15 cents each; two for 25 cents.



Sansevieria Zeylanica.

EUPHORBIA

SPLENDENS

Crown of Thorns

~ A curious plant with thick, fleshy stems which are covered with stout, sharp thorns, many an inch long. The foliage is bright green and the flowers are a beautiful coral-pink. Very pretty when in bloom and a great curiosity at any time. Soon makes handsome plants. Legend says this is the plant the Savior was crowned with. Price, 15c each; two for 25c.



Ruellia Mokoyana.

CHINESE HIBISCUS

Price, 10 cents each, any three for 25 cents. We have large plants of Hibiscus, ready to bloom, for 25 cents each. These are handsome plants.

SINENSIS GIGANTEUS—This is a plant for house cultivation during winter or summer, or for planting outside during summer. It blooms at all times of the year. The plants branch freely and flower profusely, commencing to bloom when not more than a foot high. As a specimen plant for large pots it has an equal only in the Brugmansia. Its flowers are of enormous size, often eight to ten inches across, opening flat, and of such vivid crimson-scarlet color that they can be seen from a long distance like a flaming torch. They can be wintered in the cellar or pit with perfect safety, and if one does not care to grow them all winter, one should have one or two for summer display.

GRANDIFLORUS—Rich, glossy cut-leaved foliage, literally covering the plant with scarlet-crimson flowers.

SUB VIOLACEOUS—Flowers of enormous size, beautiful carmine, tinted with violet. Probably the largest flower of the Hibiscus family, and an unusually free bloomer. We take pleasure in recommending this fine plant.

DOUBLE CRIMSON—This grand variety has immense flowers of the richest crimson; combined with glossy foliage, renders it best of all.

AURANTIACUS—Large and double with orange-colored flowers.

CARMINIATUS PERFECTUS—Full, round flowers of perfect shape and of a rich, soft, carmine-rose, with a deep crimson eye; fully six inches in diameter.

COLLERII—Flowers buff-yellow, with a crimson-scarlet base; peculiarly handsome and double.

VERSICOLOR—A variety combining in its flowers all the colors of the whole family, being handsomely striped crimson, buff, rose and white. Flowers eight inches in diameter.

SPECIAL OFFER—We will send the entire set of eight distinct kinds of Hibiscus for 85 cents.

NEW PINK HIBISCUS, PEACHBLOW

This is a sport from the double red Hibiscus Rosea Sinensis.

The flowers are double and from four to five inches in diameter, of a charming, rich, clear pink color, with small, deep crimson center. It is one of the freest flowering plant novelties recently offered. The color is an entirely new and beautiful shade, and it blooms abundantly and continuously during the summer and fall months. Large plants two and three years old make a magnificent show. It will give general satisfaction to those who grow it, either in pots or planted out in the garden. It blooms well in the winter in the greenhouse or in any sunny window. Price, 15 cents each; strong, fine plants, 30 cents each.

HARDY BORDER PLANTS

AQUILEGIA COLUMBINE—Assorted colors. 10 cents each; three for 25 cents.

ACHILLEA THE PEARL—Pure white flowers in immense clusters; fine for cemetery planting. 10 cents; three for 25 cents.

COREOPSIS LANCEOLATA GRANDIFLORA—Golden-yellow, invaluable for cutting. 10 cents; three for 25 cents.

HYACINTHUS CANDICANS—Large spikes of pure white. The Hardy Hyacinth. 5 cents; six for 25 cents.

DIGITALIS—(Foxglove)—Gloxinia-like flowers; fine assorted colors. 10 cents; three for 25 cents.

DELPHINUM FORMOSUM—(Larkspur)—No flower has such a lovely celestial blue color as this exquisite Larkspur. 10 cents; three for 25 cents. A white flowered variety at same price.

DICENTRA SPECTABILIS, or BLEEDING HEART—15 cents.

EULALIA JAPONICA ZEBRINA—(Hardy Grass)—Striped across the leaves; fine plume. 10 cents.

EULALIA JAPONICA VARIEGATA—(Hardy Grass)—Striped white and green; bears elegant plumes. 10 cents.

EULALIA GRACILIS UNIVITTATA—(Hardy Grass)—Makes immense clumps; very graceful. 10 cents; the three grasses for 25 cents.

FUNKIA SUBCORDATA GRANDIFLORA—(The White Plantain or Day Lily)—Pure white lily-shaped, fragrant flowers. 15 cents.

FUNKIA MEDIO VARIEGATA—Green and white foliage with lavender flowers. 10 cents.

GAILLARDIA GRANDIFLORA—(Blanket Flower)—The center is dark red-brown, petals marked with rings of brilliant crimson-orange and vermilion. 10 cents; three for 25 cents.

HOLLYHOCKS, MAMMOTH DOUBLE FLOWERING—We offer seven colors. Will bloom the first year. 15 cents each; four for 50 cents.

HEMEROCALLIS FLAVA—(The Lemon Lily)—This is entirely hardy, and bears flowers of a lemon-yellow color. Very desirable. 10 cents; three for 25 cents.

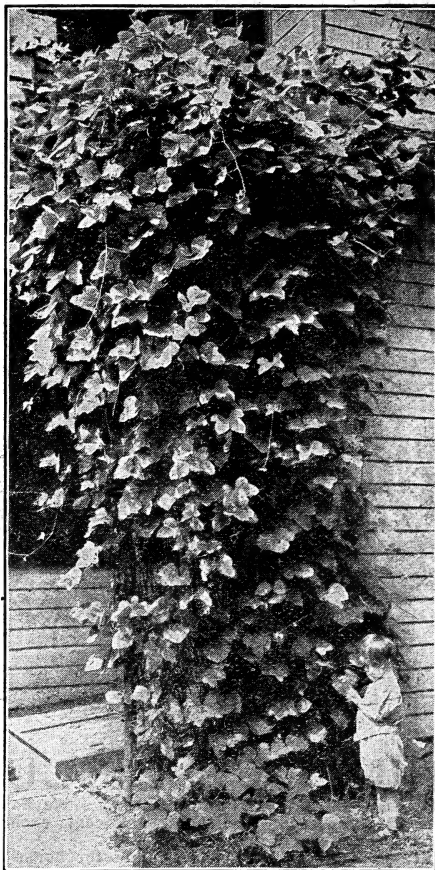
HIBISCUS CRIMSON EYE—Belongs to the family of mallows, flowers six inches across; color pure white with pronounced eye of deep crimson. 10 cents.



Photograph of New Hardy Begonia, Evansiana.

HARDY BEGONIA EVANSIANA

Think of it! A hardy Begonia, one that stood twenty degrees below zero last winter, and came up and bloomed all summer. Another thing in its favor, it requires shade to grow in, at least partial shade. So many persons write us asking for plants suitable for shady places. Well, Begonia Evansiana fills the bill. It is a wonderful, beautiful Begonia, having pendulous flowers in large racemes almost covering the entire plant. Color a sparkling pink that is simply entrancing. Everybody will want a hardy Begonia. It is also fine for pot culture. Price, for plants or bulbs to bloom next summer, 25 cents.



Kudzu Vine.

LOBELIA CARDINALIS—(Cardinal Flower)—Rich fiery-cardinal flowers; strong plants, often producing ten to eighteen spikes twelve to twenty-four inches long. 10 cents.

PLUMBAGO LARPENTAE, or LADY LARPENT—Deep royal blue flowers. This is an elegant plant. 10c; three for 25c.

HARDY SCOTCH or SWEET MAY PINKS—These are the pinks of our mothers' gardens; all colors. 10 cents each; three distinct colors for 25 cents.

RUDBECKIA LACINIATA—(Golden Glow)—Grows six to eight feet high, bearing hundreds of double yellow blossoms; it is very desirable. 10 cents; three for 25 cents.

SAGE HOLT'S MAMMOTH—A variety of unusual substance, strong flavor and superior quality. 10 cents; three for 25c.

STOKESIA CYANEA or CORNFLOWER ASTER—Grows eighteen to twenty-four inches high, flowers lavender-blue; four to five inches in diameter, borne from June to October. 10 cents; three for 25 cents.

HARDY BLUE SALVIA—(Caryopteris Mastacanthus)—A grand plant bearing rich lavender-blue flowers. Be sure and try this plant, it will please you. 10 cents.

YUCCA FILAMENTOSA—(Spanish Dagger)—Blooms every year, bearing long stalks surmounted with large umbels or heads of white flowers. 10 cents each; larger, 25 cents.

Walker's Excelsior Plant Food

The essence of plant life, fine for living plants, odorless. If you want to see your plants hump, try this Excelsior Plant Food. We recommend it especially for plants grown in the house. So you test this food at small cost to you. We offer a trial size, mailed with directions how to use for 18 cents. Will feed twenty-five plants one time and show you how it works. One-half pound package, making eighty pints, for only 30 cents, potspaid. One pound package, making 160 pints, only 50 cents, postpaid.